

Product datasheet for **TA350783**

PINK1 Rabbit Polyclonal Antibody

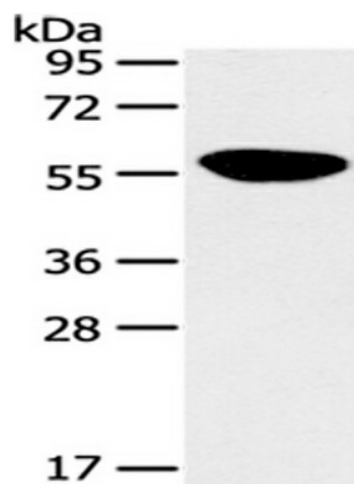
Product data:

Product Type:	Primary Antibodies
Applications:	WB
Recommended Dilution:	ELISA: 2000-5000, WB: 500-2000
Reactivity:	Human, Mouse
Host:	Rabbit
Isotype:	IgG
Clonality:	Polyclonal
Immunogen:	Synthetic peptide of human PINK1
Formulation:	pH7.4 PBS, 0.05% NaN ₃ , 40% Glycerol
Concentration:	lot specific
Purification:	Antigen affinity purification
Conjugation:	Unconjugated
Storage:	Store at -20°C as received.
Stability:	Stable for 12 months from date of receipt.
Predicted Protein Size:	63 kDa
Gene Name:	PTEN induced putative kinase 1
Database Link:	NP_115785 Entrez Gene 68943 Mouse Entrez Gene 65018 Human Q9BXM7
Background:	This gene encodes a serine/threonine protein kinase that localizes to mitochondria. It is thought to protect cells from stress-induced mitochondrial dysfunction. Mutations in this gene cause one form of autosomal recessive early-onset Parkinson disease.
Synonyms:	BRPK; PARK6
Protein Families:	Druggable Genome, Protein Kinase
Protein Pathways:	Parkinson's disease



[View online »](#)

Product images:



Gel: 10%SDS-PAGE, Lysate: 40 ug, Primary antibody: (PINK1 Antibody) at dilution 1/125 dilution, Secondary antibody: Goat anti rabbit IgG at 1/8000 dilution, Exposure time: 10 seconds