

## Product datasheet for **TA350782**

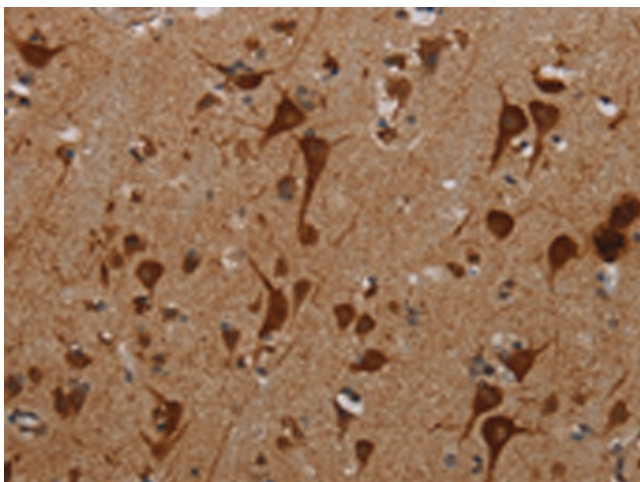
### KMT2D Rabbit Polyclonal Antibody

#### Product data:

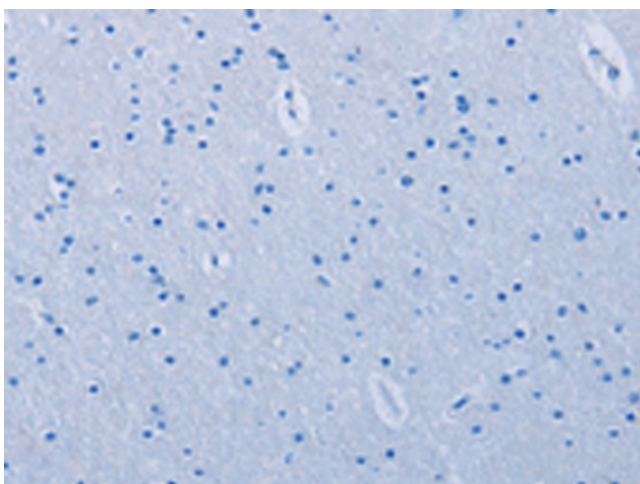
Product Type:	Primary Antibodies
Applications:	IHC
Recommended Dilution:	IHC: 50-200 Positive control: Human brain Predicted cell location: Nucleus
Reactivity:	Human
Host:	Rabbit
Isotype:	IgG
Clonality:	Polyclonal
Immunogen:	Synthetic peptide of human KMT2D
Formulation:	pH7.4 PBS, 0.05% NaN <sub>3</sub> , 40% Glycerol
Concentration:	lot specific
Purification:	Antigen affinity purification
Conjugation:	Unconjugated
Storage:	Store at -20°C as received.
Stability:	Stable for 12 months from date of receipt.
Gene Name:	lysine methyltransferase 2D
Database Link:	<a href="#">NP_003473</a> <a href="#">Entrez Gene 8085 Human</a> <a href="#">O14686</a>
Background:	The protein encoded by this gene is a histone methyltransferase that methylates the Lys-4 position of histone H3. The encoded protein is part of a large protein complex called ASCOM, which has been shown to be a transcriptional regulator of the beta-globin and estrogen receptor genes. Mutations in this gene have been shown to be a cause of Kabuki syndrome.
Synonyms:	AAD10; ALR; CAGL114; KABUK1; KMS; MLL2; MLL4; TNRC21
Protein Families:	Druggable Genome



[View online »](#)

**Product images:**

Immunohistochemistry of paraffin-embedded Human brain tissue using TA350782 (KMT2D Antibody) at dilution 1/40 (Original magnification: ×200)



Immunohistochemistry of paraffin-embedded Human brain tissue using TA350782 (KMT2D Antibody) at dilution 1/40, treated with synthetic peptide. (Original magnification: ×200)