

Product datasheet for **TA350776**

SGK2 Rabbit Polyclonal Antibody

Product data:

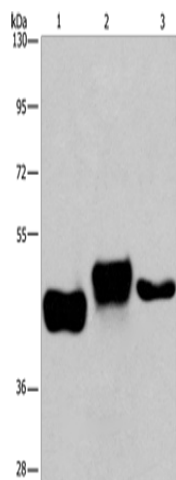
Product Type:	Primary Antibodies
Applications:	IHC, WB
Recommended Dilution:	WB: 200-1000 WB positive control: Human placenta and fetal liver tissue, HepG2 cells IHC: 25-100 Positive control: Human cervical cancer Predicted cell location: Cytoplasm
Reactivity:	Human, Mouse, Rat
Host:	Rabbit
Isotype:	IgG
Clonality:	Polyclonal
Immunogen:	Synthetic peptide of human SGK2
Formulation:	pH7.4 PBS, 0.05% NaN ₃ , 40% Glycerol
Concentration:	lot specific
Purification:	Antigen affinity purification
Conjugation:	Unconjugated
Storage:	Store at -20°C as received.
Stability:	Stable for 12 months from date of receipt.
Predicted Protein Size:	48 kDa
Gene Name:	SGK2, serine/threonine kinase 2
Database Link:	NP_733794 Entrez Gene 27219 Mouse Entrez Gene 171497 Rat Entrez Gene 10110 Human Q9HBY8
Background:	This gene encodes a serine/threonine protein kinase. Although this gene product is similar to serum- and glucocorticoid-induced protein kinase (SGK), this gene is not induced by serum or glucocorticoids. This gene is induced in response to signals that activate phosphatidylinositol 3-kinase, which is also true for SGK. Alternative splicing results in multiple transcript variants
Synonyms:	dj138B7.2; H-SGK2



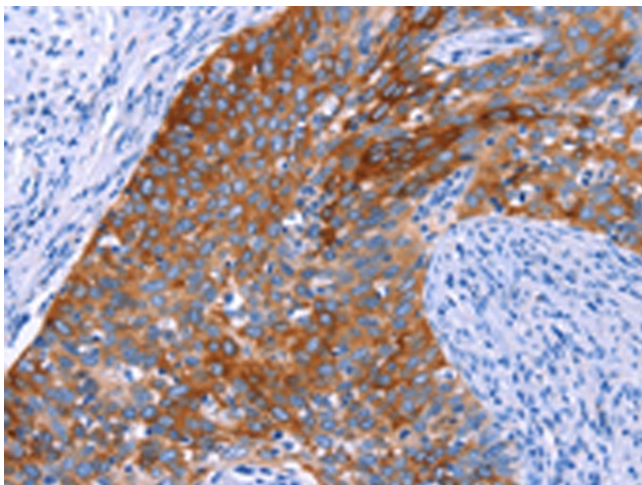
[View online »](#)

Protein Families: Druggable Genome, Protein Kinase

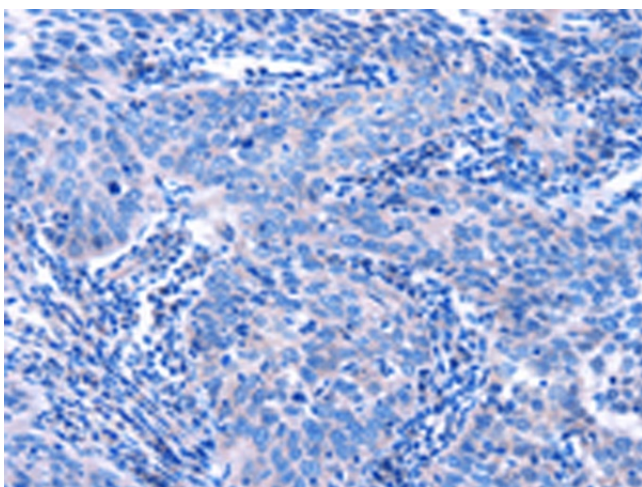
Product images:



Gel: 6%SDS-PAGE
Lysate: 40 µg
Lane 1-3: Human placenta tissue
Human fetal liver tissue
HepG2 cells
Primary antibody: TA350776 (SGK2 Antibody) at dilution 1/100
Secondary antibody: Goat anti rabbit IgG at 1/8000 dilution
Exposure time: 8 minutes



Immunohistochemistry of paraffin-embedded Human cervical cancer tissue using TA350776 (SGK2 Antibody) at dilution 1/20 (Original magnification: x200)



Immunohistochemistry of paraffin-embedded Human cervical cancer tissue using TA350776 (SGK2 Antibody) at dilution 1/20, treated with synthetic peptide. (Original magnification: $\times 200$)