

Product datasheet for **TA350774**

MEKK2 (MAP3K2) Rabbit Polyclonal Antibody

Product data:

| | |
|-----------------------|--|
| Product Type: | Primary Antibodies |
| Applications: | IHC |
| Recommended Dilution: | ELISA: 1000-2000, IHC: 25-100 |
| Reactivity: | Human, Mouse |
| Host: | Rabbit |
| Isotype: | IgG |
| Clonality: | Polyclonal |
| Immunogen: | Synthetic peptide of human MAP3K2 |
| Formulation: | pH7.4 PBS, 0.05% NaN ₃ , 40% Glycerol |
| Concentration: | lot specific |
| Purification: | Antigen affinity purification |
| Conjugation: | Unconjugated |
| Storage: | Store at -20°C as received. |
| Stability: | Stable for 12 months from date of receipt. |
| Gene Name: | mitogen-activated protein kinase kinase kinase 2 |
| Database Link: | NP_006600 Entrez Gene 26405 Mouse Entrez Gene 10746 Human Q9Y2U5 |

Background: The protein encoded by this gene is a member of serine/threonine protein kinase family. This kinase preferentially activates other kinases involved in the MAP kinase signaling pathway. This kinase has been shown to directly phosphorylate and activate I κ B kinases, and thus plays a role in NF- κ B signaling pathway. This kinase has also been found to bind and activate protein kinase C-related kinase 2, which suggests its involvement in a regulated signaling process.

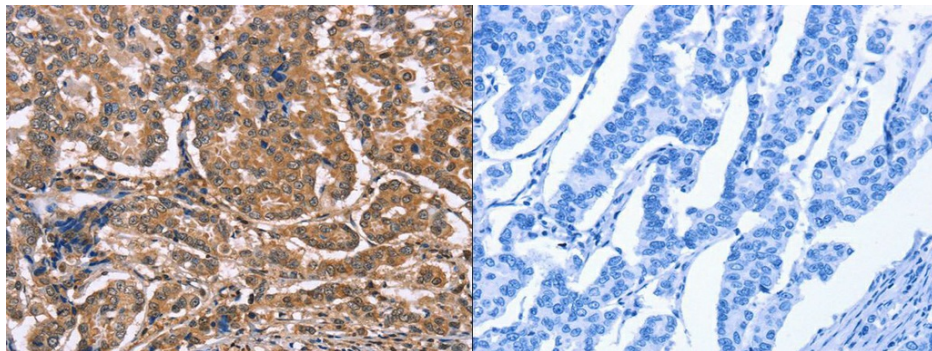
Synonyms: MEKK2; MEKK2B

Protein Families: Druggable Genome, Protein Kinase

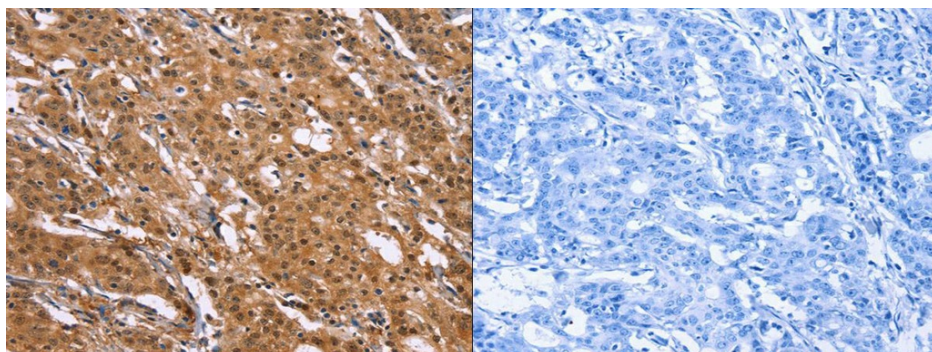
Protein Pathways: Gap junction, GnRH signaling pathway, MAPK signaling pathway



[View online »](#)

Product images:

The image on the left is immunohistochemistry of paraffin-embedded Human breast cancer tissue using (MAP3K2 Antibody) at dilution 1/20, on the right is treated with synthetic peptide. (Original magnification: $\times 200$)



The image on the left is immunohistochemistry of paraffin-embedded Human gastric cancer tissue using (MAP3K2 Antibody) at dilution 1/20, on the right is treated with synthetic peptide. (Original magnification: $\times 200$)