

Product datasheet for **TA350772**

ORAI1 Rabbit Polyclonal Antibody

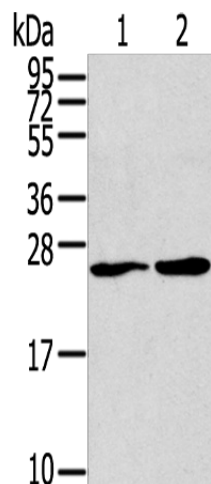
Product data:

Product Type:	Primary Antibodies
Applications:	WB
Recommended Dilution:	WB: 200-1000 WB positive control: Jurkat and PC3 cell lysates
Reactivity:	Human, Mouse, Rat
Host:	Rabbit
Isotype:	IgG
Clonality:	Polyclonal
Immunogen:	Synthetic peptide of human ORAI1(L1)
Formulation:	pH7.4 PBS, 0.05% NaN ₃ , 40% Glycerol
Concentration:	lot specific
Purification:	Antigen affinity purification
Conjugation:	Unconjugated
Storage:	Store at -20°C as received.
Stability:	Stable for 12 months from date of receipt.
Predicted Protein Size:	33 kDa
Gene Name:	ORAI calcium release-activated calcium modulator 1
Database Link:	NP_116179 Entrez Gene 109305 MouseEntrez Gene 304496 RatEntrez Gene 84876 Human Q96D31
Background:	The protein encoded by this gene is a membrane calcium channel subunit that is activated by the calcium sensor STIM1 when calcium stores are depleted. This type of channel is the primary way for calcium influx into T-cells. Defects in this gene are a cause of immune dysfunction with T-cell inactivation due to calcium entry defect type 1 (IDTICED1).
Synonyms:	CRACM1; IMD9; ORAT1; TAM2; TMEM142A
Protein Families:	Transmembrane



[View online »](#)

Product images:



Gel: 12%SDS-PAGE
Lysate: 40 μ g
Lane 1-2: Jurkat and PC3 cell lysates
Primary antibody: TA350772 (ORAI1(L1) Antibody)
at dilution 1/250 dilution
Secondary antibody: Goat anti rabbit IgG at
1/8000 dilution
Exposure time: 10 minutes