

Product datasheet for **TA350767**

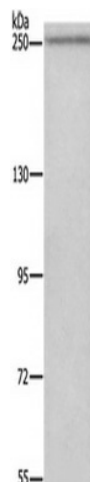
WNK3 Rabbit Polyclonal Antibody

Product data:

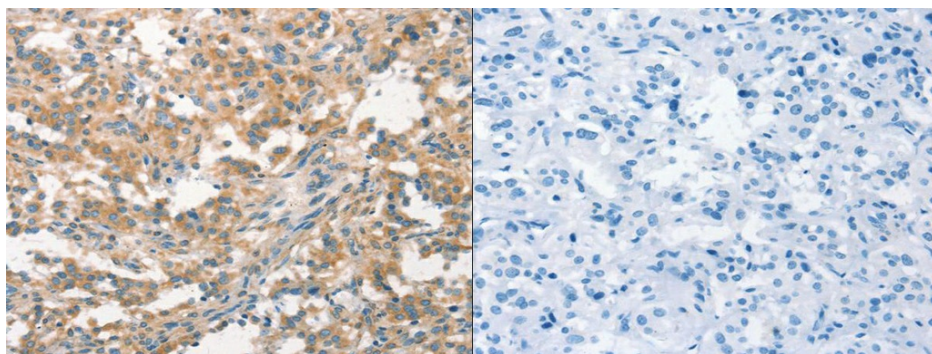
Product Type:	Primary Antibodies
Applications:	IHC, WB
Recommended Dilution:	ELISA: 1000-2000, WB: 200-1000, IHC: 25-100
Reactivity:	Human, Mouse
Host:	Rabbit
Isotype:	IgG
Clonality:	Polyclonal
Immunogen:	Synthetic peptide of human WNK3
Formulation:	pH7.4 PBS, 0.05% NaN ₃ , 40% Glycerol
Concentration:	lot specific
Purification:	Antigen affinity purification
Conjugation:	Unconjugated
Storage:	Store at -20°C as received.
Stability:	Stable for 12 months from date of receipt.
Predicted Protein Size:	198 kDa
Gene Name:	WNK lysine deficient protein kinase 3
Database Link:	NP_065973 Entrez Gene 279561 Mouse Entrez Gene 65267 Human Q9BYP7
Background:	This gene encodes a protein belonging to the 'with no lysine' family of serine-threonine protein kinases. These family members lack the catalytic lysine in subdomain II, and instead have a conserved lysine in subdomain I. This family member functions as a positive regulator of the transcellular Ca ²⁺ transport pathway, and it plays a role in the increase of cell survival in a caspase-3-dependent pathway. Alternative splicing results in multiple transcript variants.
Synonyms:	PRKWNK3
Protein Families:	Druggable Genome, Protein Kinase



[View online »](#)

Product images:

Gel: 6%SDS-PAGE, Lysate: 40 ug, Lane: HeLa cells, Primary antibody: (WNK3 Antibody) at dilution 1/300, Secondary antibody: Goat anti rabbit IgG at 1/8000 dilution, Exposure time: 10 minutes



The image on the left is immunohistochemistry of paraffin-embedded Human thyroid cancer tissue using (WNK3 Antibody) at dilution 1/20, on the right is treated with synthetic peptide. (Original magnification: $\times 200$)