

Product datasheet for **TA350763**

PKC mu (PRKD1) Rabbit Polyclonal Antibody

Product data:

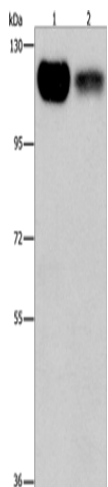
Product Type:	Primary Antibodies
Applications:	IHC, WB
Recommended Dilution:	WB: 500-2000 WB positive control: 293T and NIH/3T3 cells IHC: 50-200 Positive control: Human cervical cancer Predicted cell location: Cytoplasm
Reactivity:	Human, Mouse, Rat
Host:	Rabbit
Isotype:	IgG
Clonality:	Polyclonal
Immunogen:	Synthetic peptide of human PRKD1
Formulation:	pH7.4 PBS, 0.05% NaN ₃ , 40% Glycerol
Concentration:	lot specific
Purification:	Antigen affinity purification
Conjugation:	Unconjugated
Storage:	Store at -20°C as received.
Stability:	Stable for 12 months from date of receipt.
Predicted Protein Size:	102 kDa
Gene Name:	protein kinase D1
Database Link:	NP_002733 Entrez Gene 18760 Mouse Entrez Gene 85421 Rat Entrez Gene 5587 Human Q15139
Background:	PRKD1 is a serine/threonine kinase that regulates a variety of cellular functions, including membrane receptor signaling, transport at the Golgi, protection from oxidative stress at the mitochondria, gene transcription, and regulation of cell shape, motility, and adhesion.
Synonyms:	PKC-MU; PKCM; PKD; PRKCM



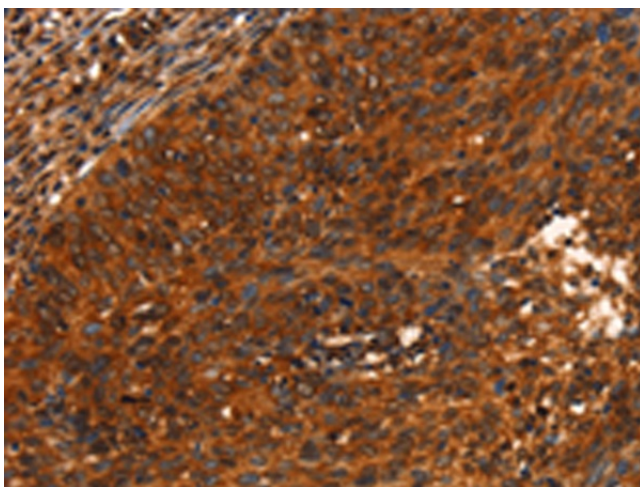
[View online »](#)

Protein Families: Druggable Genome, Protein Kinase

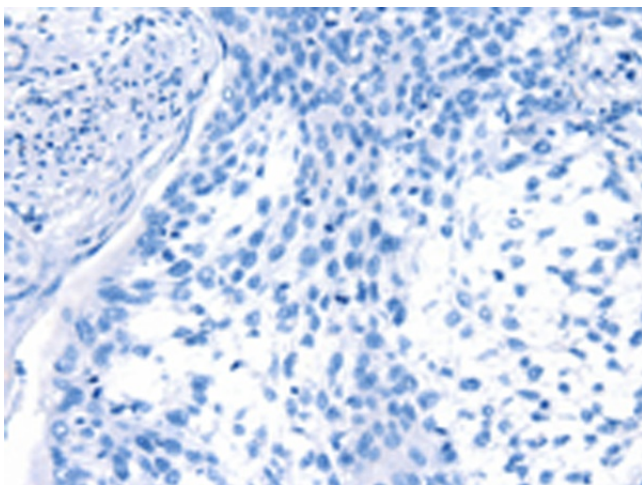
Product images:



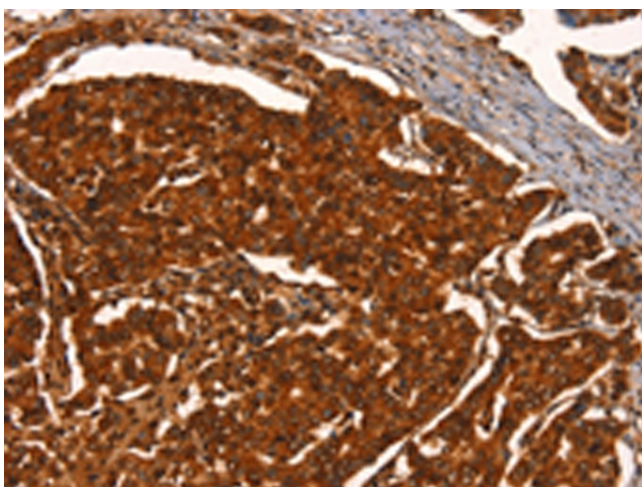
Gel: 6%SDS-PAGE
Lysate: 40 µg
Lane 1-2: 293T cells
NIH/3T3 cells
Primary antibody: TA350763 (PRKD1 Antibody) at dilution 1/550
Secondary antibody: Goat anti rabbit IgG at 1/8000 dilution
Exposure time: 30 seconds



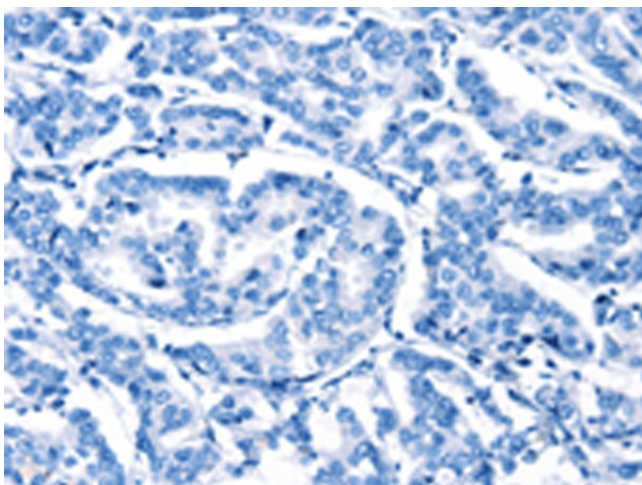
Immunohistochemistry of paraffin-embedded Human cervical cancer tissue using TA350763 (PRKD1 Antibody) at dilution 1/40 (Original magnification: ×200)



Immunohistochemistry of paraffin-embedded Human cervical cancer tissue using TA350763 (PRKD1 Antibody) at dilution 1/40, treated with synthetic peptide. (Original magnification: $\times 200$)



Immunohistochemistry of paraffin-embedded Human breast cancer tissue using TA350763 (PRKD1 Antibody) at dilution 1/40 (Original magnification: $\times 200$)



Immunohistochemistry of paraffin-embedded Human breast cancer tissue using TA350763 (PRKD1 Antibody) at dilution 1/40, treated with synthetic peptide. (Original magnification: $\times 200$)