

Product datasheet for **TA350759**

GJA9 Rabbit Polyclonal Antibody

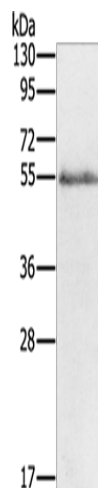
Product data:

Product Type:	Primary Antibodies
Applications:	WB
Recommended Dilution:	WB: 200-1000 WB positive control: Human placenta tissue
Reactivity:	Human
Host:	Rabbit
Isotype:	IgG
Clonality:	Polyclonal
Immunogen:	Synthetic peptide of human GJA9
Formulation:	pH7.4 PBS, 0.05% NaN ₃ , 40% Glycerol
Concentration:	lot specific
Purification:	Antigen affinity purification
Conjugation:	Unconjugated
Storage:	Store at -20°C as received.
Stability:	Stable for 12 months from date of receipt.
Predicted Protein Size:	59 kDa
Gene Name:	gap junction protein alpha 9
Database Link:	NP_110399 Entrez Gene 81025 Human P57773
Background:	Connexins, such as GJA9, are involved in the formation of gap junctions, intercellular conduits that directly connect the cytoplasm of contacting cells. Each gap junction channel is formed by docking of 2 hemichannels, each of which contains 6 connexin subunits.
Synonyms:	CX58; CX59; GJA10
Protein Families:	Transmembrane



[View online »](#)

Product images:



Gel: 8%SDS-PAGE

Lysate: 60 μ g

Lane: Human placenta tissue

Primary antibody: TA350759 (GJA9 Antibody) at dilution 1/200

Secondary antibody: Goat anti rabbit IgG at 1/8000 dilution

Exposure time: 5 minutes