

## Product datasheet for **TA350757**

### GJB4 Rabbit Polyclonal Antibody

#### Product data:

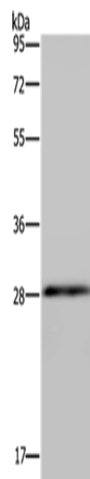
Product Type:	Primary Antibodies
Applications:	IHC, WB
Recommended Dilution:	WB: 200-1000 WB positive control: Mouse skin tissue IHC: 50-200 Positive control: Human thyroid cancer Predicted cell location: Cytoplasm
Reactivity:	Human, Mouse
Host:	Rabbit
Isotype:	IgG
Clonality:	Polyclonal
Immunogen:	Synthetic peptide of human GJB4
Formulation:	pH7.4 PBS, 0.05% NaN <sub>3</sub> , 40% Glycerol
Concentration:	lot specific
Purification:	Antigen affinity purification
Conjugation:	Unconjugated
Storage:	Store at -20°C as received.
Stability:	Stable for 12 months from date of receipt.
Predicted Protein Size:	30 kDa
Gene Name:	gap junction protein beta 4
Database Link:	<a href="#">NP_694944</a> <a href="#">Entrez Gene 14621 Mouse</a> <a href="#">Entrez Gene 127534 Human</a> <a href="#">Q9NTQ9</a>
Background:	This gene encodes a transmembrane connexin protein that is a component of gap junctions. Mutations in this gene have been associated with erythrokeratoderma variabilis, progressive symmetric erythrokeratoderma and hearing impairment.
Synonyms:	CX30.3; EKV



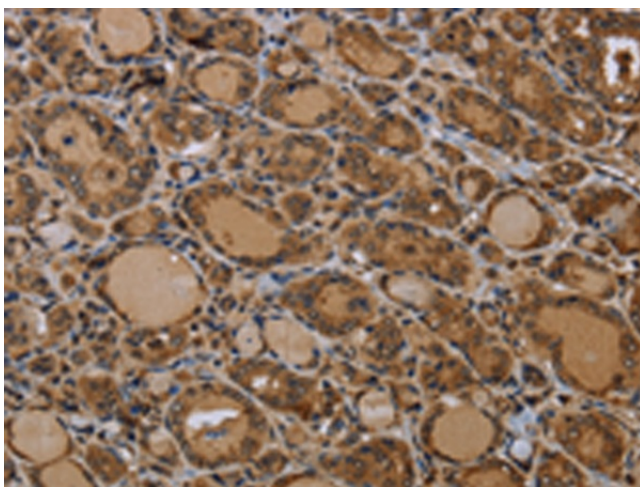
[View online »](#)

Protein Families: Ion Channels: Other, Transmembrane

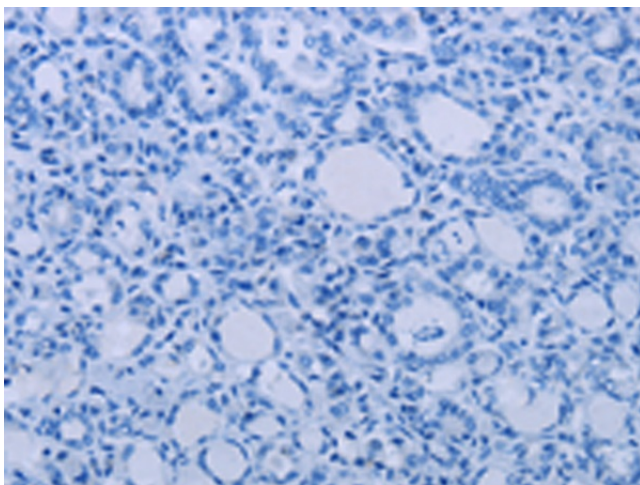
### Product images:



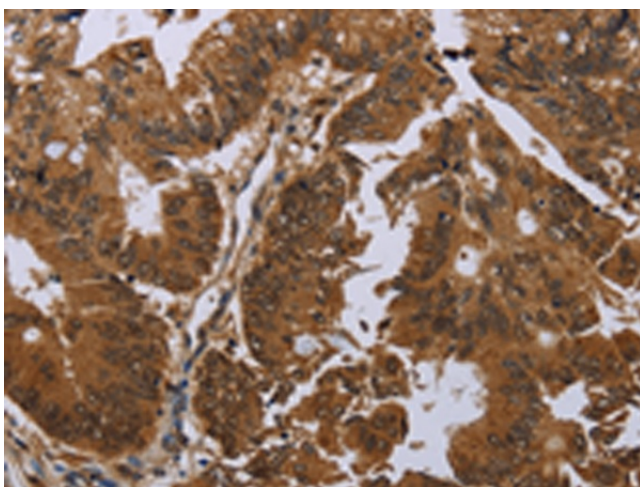
Gel: 10%SDS-PAGE  
Lysate: 40 µg  
Lane: Mouse skin tissue  
Primary antibody: TA350757 (GJB4 Antibody) at dilution 1/200  
Secondary antibody: Goat anti rabbit IgG at 1/8000 dilution  
Exposure time: 5 minutes



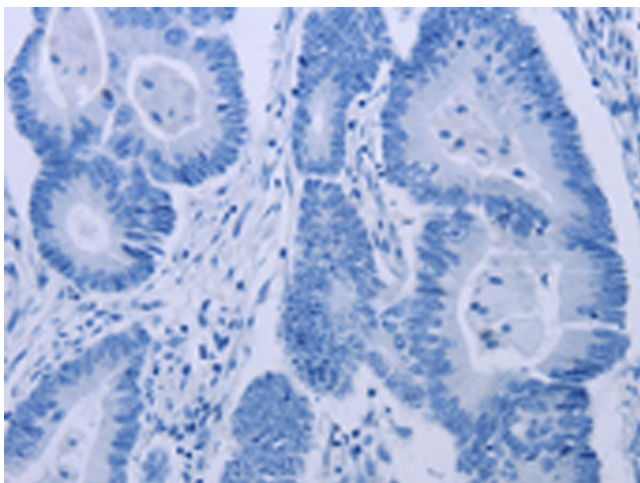
Immunohistochemistry of paraffin-embedded Human thyroid cancer tissue using TA350757 (GJB4 Antibody) at dilution 1/50 (Original magnification: ×200)



Immunohistochemistry of paraffin-embedded Human thyroid cancer tissue using TA350757 (GJB4 Antibody) at dilution 1/50, treated with synthetic peptide. (Original magnification: x200)



Immunohistochemistry of paraffin-embedded Human colon cancer tissue using TA350757 (GJB4 Antibody) at dilution 1/50 (Original magnification: x200)



Immunohistochemistry of paraffin-embedded Human colon cancer tissue using TA350757 (GJB4 Antibody) at dilution 1/50, treated with synthetic peptide. (Original magnification: x200)