

## Product datasheet for **TA350756**

### DCAMKL1 (DCLK1) Rabbit Polyclonal Antibody

#### Product data:

Product Type:	Primary Antibodies
Applications:	IHC
Recommended Dilution:	IHC: 25-100 Positive control: Human gastric cancer Predicted cell location: Cytoplasm
Reactivity:	Human, Mouse
Host:	Rabbit
Isotype:	IgG
Clonality:	Polyclonal
Immunogen:	Synthetic peptide of human DCLK1
Formulation:	pH7.4 PBS, 0.05% NaN <sub>3</sub> , 40% Glycerol
Concentration:	lot specific
Purification:	Antigen affinity purification
Conjugation:	Unconjugated
Storage:	Store at -20°C as received.
Stability:	Stable for 12 months from date of receipt.
Gene Name:	doublecortin like kinase 1
Database Link:	<a href="#">NP_004725</a> <a href="#">Entrez Gene 13175 Mouse</a> <a href="#">Entrez Gene 9201 Human</a> <a href="#">O15075</a>

**Background:** This gene encodes a member of the protein kinase superfamily and the doublecortin family. The protein encoded by this gene contains two N-terminal doublecortin domains, which bind microtubules and regulate microtubule polymerization, a C-terminal serine/threonine protein kinase domain, which shows substantial homology to Ca<sup>2+</sup>/calmodulin-dependent protein kinase, and a serine/proline-rich domain in between the doublecortin and the protein kinase domains, which mediates multiple protein-protein interactions. The microtubule-polymerizing activity of the encoded protein is independent of its protein kinase activity.

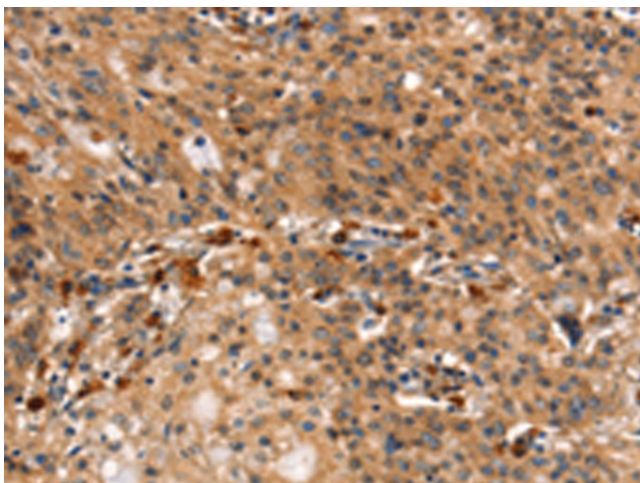
**Synonyms:** CL1; CLICK1; DCAMKL1; DCDC3A; DCLK



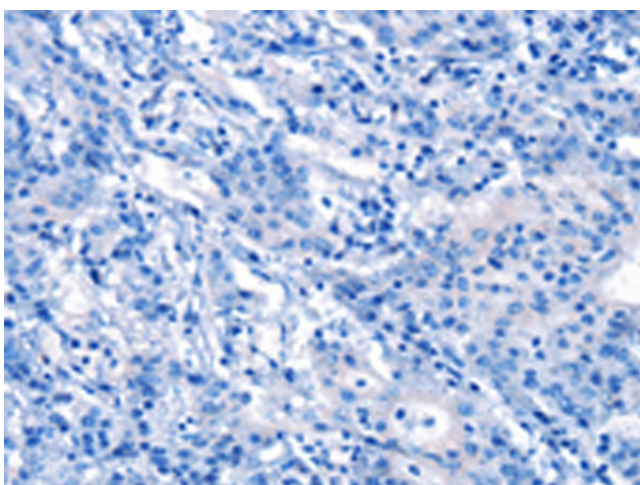
[View online »](#)

Protein Families: Druggable Genome, Protein Kinase

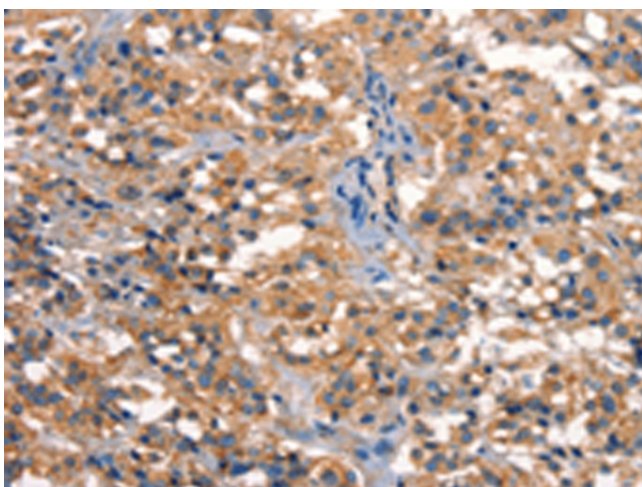
### Product images:



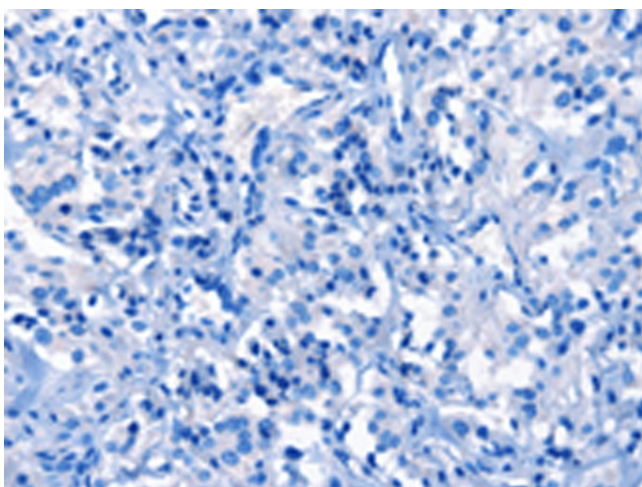
Immunohistochemistry of paraffin-embedded Human gastric cancer tissue using TA350756 (DCLK1 Antibody) at dilution 1/25 (Original magnification:  $\times 200$ )



Immunohistochemistry of paraffin-embedded Human gastric cancer tissue using TA350756 (DCLK1 Antibody) at dilution 1/25, treated with synthetic peptide. (Original magnification:  $\times 200$ )



Immunohistochemistry of paraffin-embedded Human thyroid cancer tissue using TA350756 (DCLK1 Antibody) at dilution 1/25 (Original magnification: ×200)



Immunohistochemistry of paraffin-embedded Human thyroid cancer tissue using TA350756 (DCLK1 Antibody) at dilution 1/25, treated with synthetic peptide. (Original magnification: ×200)