

## Product datasheet for **TA350754**

### Lin28 (LIN28A) Rabbit Polyclonal Antibody

#### Product data:

Product Type:	Primary Antibodies
Applications:	IHC
Recommended Dilution:	IHC: 25-100 Positive control: Human gastric cancer Predicted cell location: Nucleus
Reactivity:	Human, Mouse
Host:	Rabbit
Isotype:	IgG
Clonality:	Polyclonal
Immunogen:	Synthetic peptide of human LIN28A
Formulation:	pH7.4 PBS, 0.05% NaN <sub>3</sub> , 40% Glycerol
Concentration:	lot specific
Purification:	Antigen affinity purification
Conjugation:	Unconjugated
Storage:	Store at -20°C as received.
Stability:	Stable for 12 months from date of receipt.
Gene Name:	lin-28 homolog A
Database Link:	<a href="#">NP_078950</a> <a href="#">Entrez Gene 83557 Mouse</a> <a href="#">Entrez Gene 79727 Human</a> <a href="#">Q9H9Z2</a>

**Background:** LIN-28 is a highly conserved, RNA-binding, cytoplasmic protein. It consists of a cold shock domain and retroviral-type (CCHC) zinc finger motifs that were first identified in *Caenorhabditis elegans*. LIN-28 controls the timing of events during embryonic development and is readily expressed in embryos, embryonic stem cells and embryonal carcinoma cells. The presence of LIN-28 persists in some adult tissues including cardiac and skeletal muscle. In differentiating myoblasts, LIN-28 increases protein synthesis efficiency and binds to the growth and differentiation factor IGF-II.

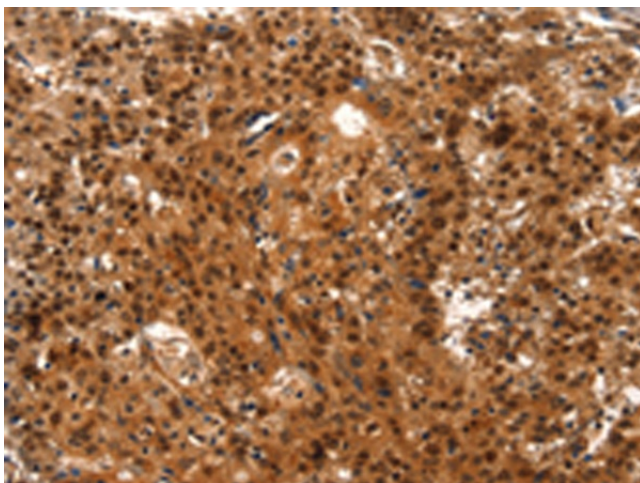
**Synonyms:** CSDD1; LIN-28; lin-28A; LIN28; ZCCHC1



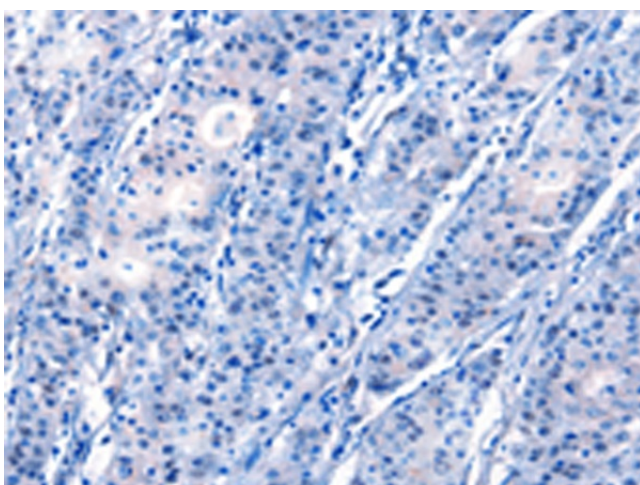
[View online »](#)

Protein Families: Transcription Factors

### Product images:



Immunohistochemistry of paraffin-embedded Human gastric cancer tissue using TA350754 (LIN28A Antibody) at dilution 1/15 (Original magnification:  $\times 200$ )



Immunohistochemistry of paraffin-embedded Human gastric cancer tissue using TA350754 (LIN28A Antibody) at dilution 1/15, treated with synthetic peptide. (Original magnification:  $\times 200$ )