

Product datasheet for **TA350753**

KDM6B Rabbit Polyclonal Antibody

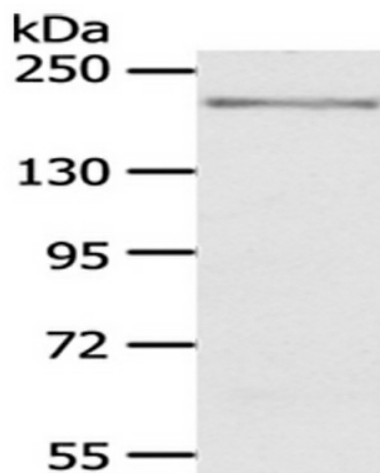
Product data:

Product Type:	Primary Antibodies
Applications:	WB
Recommended Dilution:	ELISA: 1000-2000, WB: 200-1000
Reactivity:	Human, Mouse
Host:	Rabbit
Isotype:	IgG
Clonality:	Polyclonal
Immunogen:	Synthetic peptide of human KDM6B
Formulation:	pH7.4 PBS, 0.05% NaN ₃ , 40% Glycerol
Concentration:	lot specific
Purification:	Antigen affinity purification
Conjugation:	Unconjugated
Storage:	Store at -20°C as received.
Stability:	Stable for 12 months from date of receipt.
Predicted Protein Size:	177 kDa
Gene Name:	lysine demethylase 6B
Database Link:	NP_001073893 Entrez Gene 216850 Mouse Entrez Gene 23135 Human O15054
Background:	KDM6B (Lysine demethylase 6B) is a 1,679 amino acid nuclear protein that contains one JmjC domain and belongs to the highly conserved JmjC domain-containing protein family. Functioning as a histone demethylase, JMJD3 uses iron and ascorbate as cofactors to demethylate dimethylated and trimethylated Lys-27 residues of Histone H3, thereby playing an important role in the modification of the histone code.
Synonyms:	JMJD3



[View online »](#)

Product images:



Gel: 6%SDS-PAGE, Lysate: 40 ug, Primary antibody: (KDM6B Antibody) at dilution 1/200 dilution, Secondary antibody: Goat anti rabbit IgG at 1/8000 dilution, Exposure time: 10 minutes