

## Product datasheet for **TA350752**

### IKK beta (IKBKB) Rabbit Polyclonal Antibody

#### Product data:

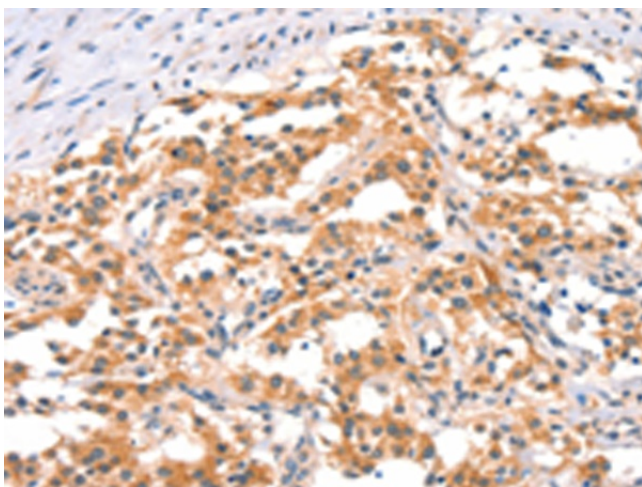
Product Type:	Primary Antibodies
Applications:	IHC
Recommended Dilution:	IHC: 25-100 Positive control: Human thyroid cancer Predicted cell location: Cytoplasm
Reactivity:	Human
Host:	Rabbit
Isotype:	IgG
Clonality:	Polyclonal
Immunogen:	Synthetic peptide of human IKBKB
Formulation:	pH7.4 PBS, 0.05% NaN <sub>3</sub> , 40% Glycerol
Concentration:	lot specific
Purification:	Antigen affinity purification
Conjugation:	Unconjugated
Storage:	Store at -20°C as received.
Stability:	Stable for 12 months from date of receipt.
Gene Name:	inhibitor of kappa light polypeptide gene enhancer in B-cells, kinase beta
Database Link:	<a href="#">NP_001547</a> <a href="#">Entrez Gene 3551 Human</a> <a href="#">O14920</a>
Background:	The protein encoded by this gene phosphorylates the inhibitor in the inhibitor/NF-kappa-B complex, causing dissociation of the inhibitor and activation of NF-kappa-B. The encoded protein itself is found in a complex of proteins. Several transcript variants, some protein-coding and some not, have been found for this gene.
Synonyms:	IKK-beta; IKK2; IKKB; IMD15; NFKBIKB
Protein Families:	Druggable Genome, Protein Kinase, Transcription Factors



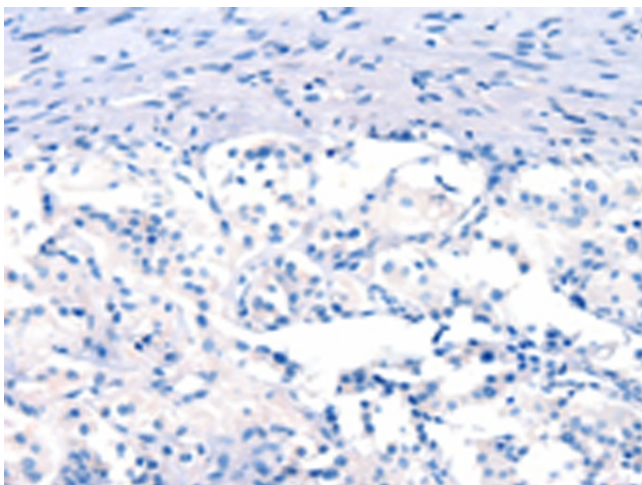
[View online »](#)

**Protein Pathways:**

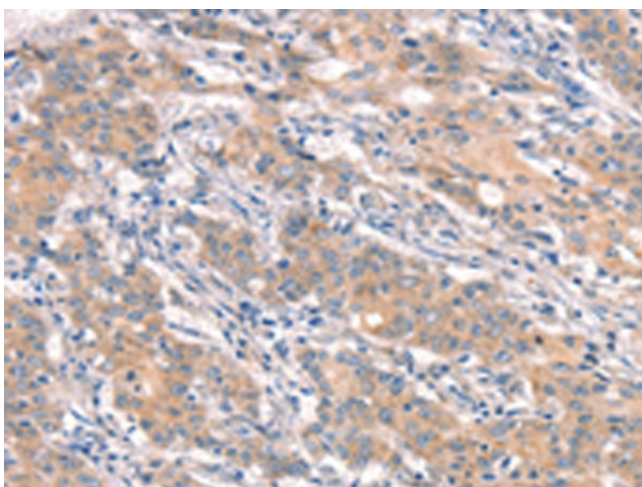
Acute myeloid leukemia, Adipocytokine signaling pathway, Apoptosis, B cell receptor signaling pathway, Chemokine signaling pathway, Chronic myeloid leukemia, Cytosolic DNA-sensing pathway, Epithelial cell signaling in Helicobacter pylori infection, Insulin signaling pathway, MAPK signaling pathway, Neurotrophin signaling pathway, NOD-like receptor signaling pathway, Pancreatic cancer, Pathways in cancer, Prostate cancer, RIG-I-like receptor signaling pathway, Small cell lung cancer, T cell receptor signaling pathway, Toll-like receptor signaling pathway, Type II diabetes mellitus

**Product images:**

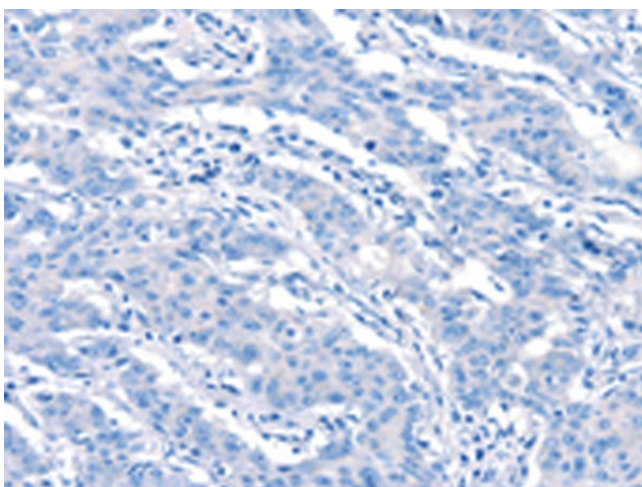
Immunohistochemistry of paraffin-embedded Human thyroid cancer tissue using TA350752 (IKBKB Antibody) at dilution 1/25 (Original magnification: x200)



Immunohistochemistry of paraffin-embedded Human thyroid cancer tissue using TA350752 (IKBKB Antibody) at dilution 1/25, treated with synthetic peptide. (Original magnification: x200)



Immunohistochemistry of paraffin-embedded Human gastric cancer tissue using TA350752 (IKBKB Antibody) at dilution 1/25 (Original magnification: ×200)



Immunohistochemistry of paraffin-embedded Human gastric cancer tissue using TA350752 (IKBKB Antibody) at dilution 1/25, treated with synthetic peptide. (Original magnification: ×200)