

## Product datasheet for **TA350750S**

### DCC Rabbit Polyclonal Antibody

#### Product data:

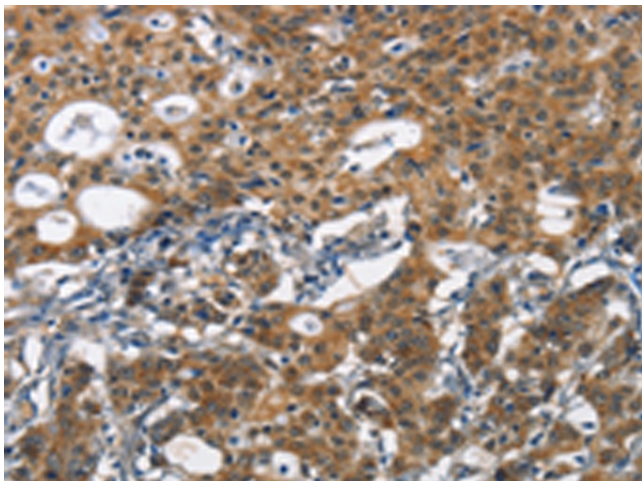
Product Type:	Primary Antibodies
Applications:	IHC
Recommended Dilution:	IHC: 50-200 Positive control: Human gastric cancer Predicted cell location: Cytoplasm
Reactivity:	Human, Mouse, Rat
Host:	Rabbit
Isotype:	IgG
Clonality:	Polyclonal
Immunogen:	Synthetic peptide of human DCC
Formulation:	pH7.4 PBS, 0.05% NaN <sub>3</sub> , 40% Glycerol
Purification:	Antigen affinity purification
Conjugation:	Unconjugated
Storage:	Store at -20°C as received.
Stability:	Stable for 12 months from date of receipt.
Gene Name:	DCC netrin 1 receptor
Database Link:	<a href="#">NP_005206</a> <a href="#">Entrez Gene 13176 Mouse</a> <a href="#">Entrez Gene 25311 Rat</a> <a href="#">Entrez Gene 1630 Human</a> <a href="#">P43146</a>
Background:	This gene encodes a netrin 1 receptor. The transmembrane protein is a member of the immunoglobulin superfamily of cell adhesion molecules, and mediates axon guidance of neuronal growth cones towards sources of netrin 1 ligand. The cytoplasmic tail interacts with the tyrosine kinases Src and focal adhesion kinase (FAK, also known as PTK2) to mediate axon attraction. The protein partially localizes to lipid rafts, and induces apoptosis in the absence of ligand. The protein functions as a tumor suppressor, and is frequently mutated or downregulated in colorectal cancer and esophageal carcinoma.
Synonyms:	CRC18; CRCR1; IGDCC1; MRMV1; NTN1R1
Protein Families:	Druggable Genome, Transmembrane



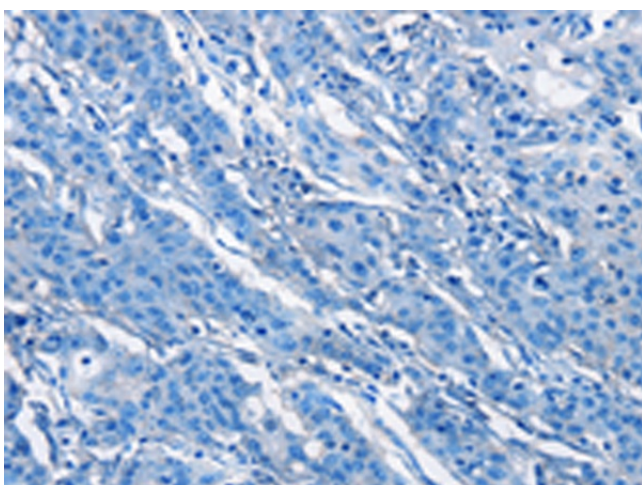
[View online »](#)

Protein Pathways: Axon guidance, Colorectal cancer, Pathways in cancer

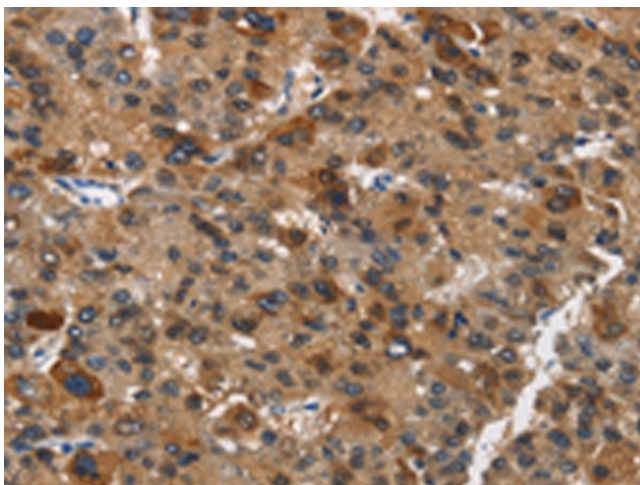
### Product images:



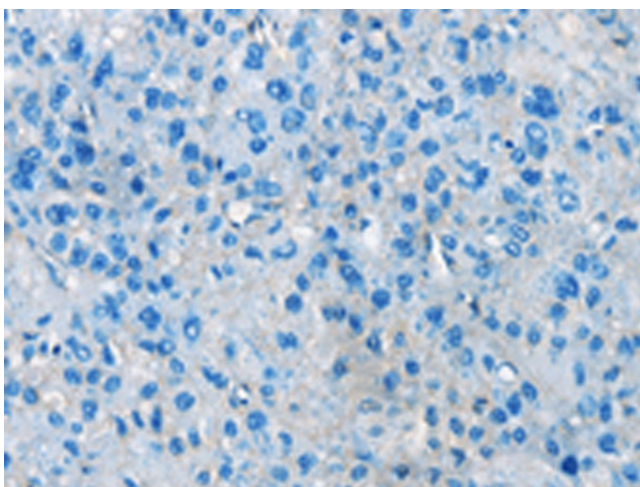
Immunohistochemistry of paraffin-embedded Human gastric cancer tissue using [TA350750] (DCC Antibody) at dilution 1/70 (Original magnification:  $\times 200$ )



Immunohistochemistry of paraffin-embedded Human gastric cancer tissue using [TA350750] (DCC Antibody) at dilution 1/70, treated with synthetic peptide. (Original magnification:  $\times 200$ )



Immunohistochemistry of paraffin-embedded Human liver cancer tissue using [TA350750] (DCC Antibody) at dilution 1/70 (Original magnification: ×200)



Immunohistochemistry of paraffin-embedded Human liver cancer tissue using [TA350750] (DCC Antibody) at dilution 1/70, treated with synthetic peptide. (Original magnification: ×200)