

## Product datasheet for **TA350749S**

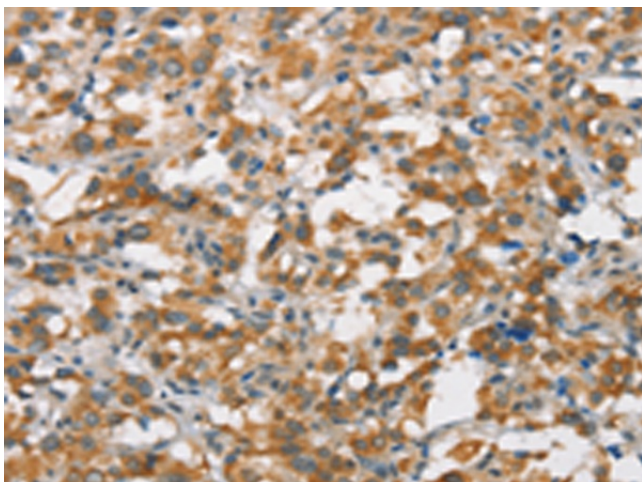
### Frizzled homolog 1 (FZD1) Rabbit Polyclonal Antibody

#### Product data:

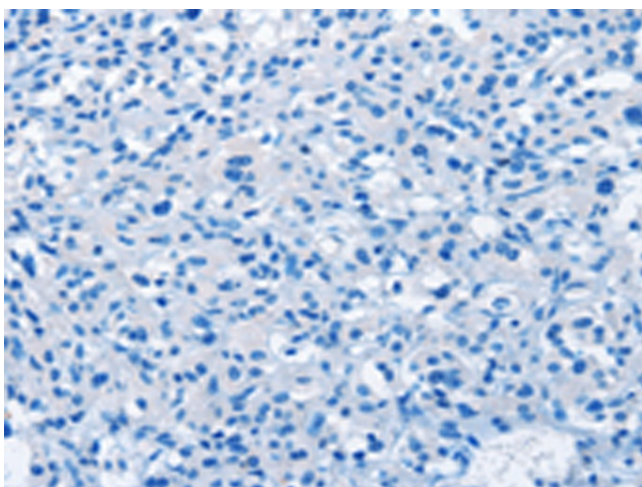
Product Type:	Primary Antibodies
Applications:	IHC
Recommended Dilution:	IHC: 25-100 Positive control: Human thyroid cancer Predicted cell location: Cytoplasm
Reactivity:	Human, Mouse, Rat
Host:	Rabbit
Isotype:	IgG
Clonality:	Polyclonal
Immunogen:	Synthetic peptide of human FZD1
Formulation:	pH7.4 PBS, 0.05% NaN <sub>3</sub> , 40% Glycerol
Purification:	Antigen affinity purification
Conjugation:	Unconjugated
Storage:	Store at -20°C as received.
Stability:	Stable for 12 months from date of receipt.
Gene Name:	frizzled class receptor 1
Database Link:	<a href="#">NP_003496</a> <a href="#">Entrez Gene 14362 Mouse</a> <a href="#">Entrez Gene 58868 Rat</a> <a href="#">Entrez Gene 8321 Human</a> <a href="#">Q9UP38</a>
Background:	Members of the 'frizzled' gene family encode 7-transmembrane domain proteins that are receptors for Wnt signaling proteins. The FZD1 protein contains a signal peptide, a cysteine-rich domain in the N-terminal extracellular region, 7 transmembrane domains, and a C-terminal PDZ domain-binding motif. The FZD1 transcript is expressed in various tissues.
Synonyms:	DKFZp564G072; FLJ95923
Protein Families:	Druggable Genome, GPCR, Transmembrane
Protein Pathways:	Basal cell carcinoma, Colorectal cancer, Melanogenesis, Pathways in cancer, Wnt signaling pathway



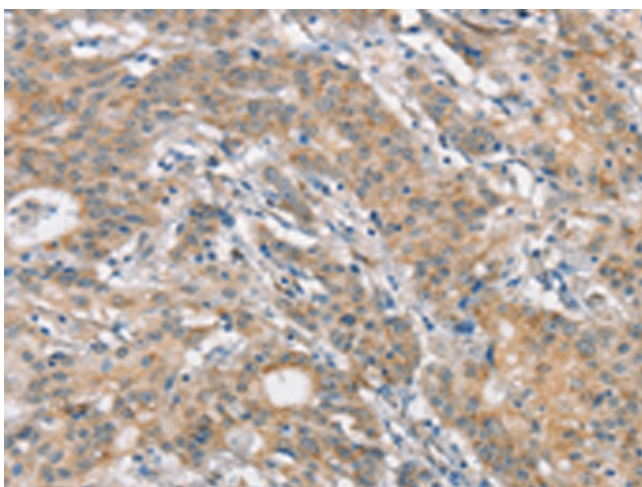
[View online »](#)

**Product images:**

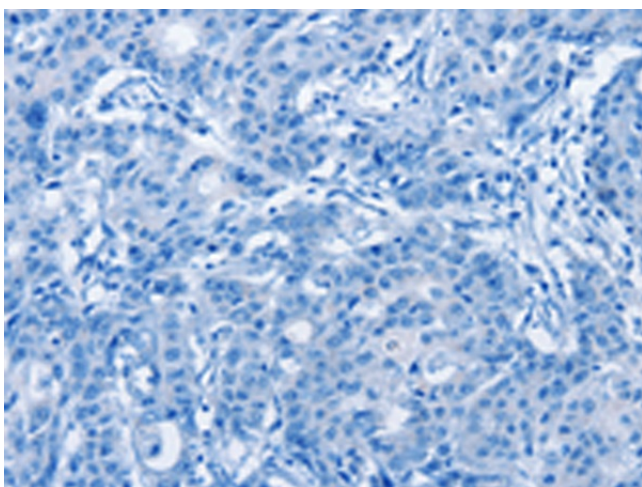
Immunohistochemistry of paraffin-embedded Human thyroid cancer tissue using [TA350749] (FZD1 Antibody) at dilution 1/15 (Original magnification:  $\times 200$ )



Immunohistochemistry of paraffin-embedded Human thyroid cancer tissue using [TA350749] (FZD1 Antibody) at dilution 1/15, treated with synthetic peptide. (Original magnification:  $\times 200$ )



Immunohistochemistry of paraffin-embedded Human gastric cancer tissue using [TA350749] (FZD1 Antibody) at dilution 1/15 (Original magnification:  $\times 200$ )



Immunohistochemistry of paraffin-embedded Human gastric cancer tissue using [TA350749] (FZD1 Antibody) at dilution 1/15, treated with synthetic peptide. (Original magnification:  $\times 200$ )