

## Product datasheet for **TA350748**

### CD49b (ITGA2) Rabbit Polyclonal Antibody

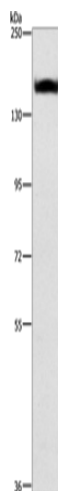
#### Product data:

Product Type:	Primary Antibodies
Applications:	IHC, WB
Recommended Dilution:	WB: 200-1000 WB positive control: A431 cells IHC: 25-100 Positive control: Human gastric cancer Predicted cell location: Cytoplasm
Reactivity:	Human
Host:	Rabbit
Isotype:	IgG
Clonality:	Polyclonal
Immunogen:	Synthetic peptide of human ITGA2
Formulation:	pH7.4 PBS, 0.05% NaN <sub>3</sub> , 40% Glycerol
Concentration:	lot specific
Purification:	Antigen affinity purification
Conjugation:	Unconjugated
Storage:	Store at -20°C as received.
Stability:	Stable for 12 months from date of receipt.
Predicted Protein Size:	129 kDa
Gene Name:	integrin subunit alpha 2
Database Link:	<a href="#">NP_002194</a> <a href="#">Entrez Gene 3673 Human</a> <a href="#">P17301</a>

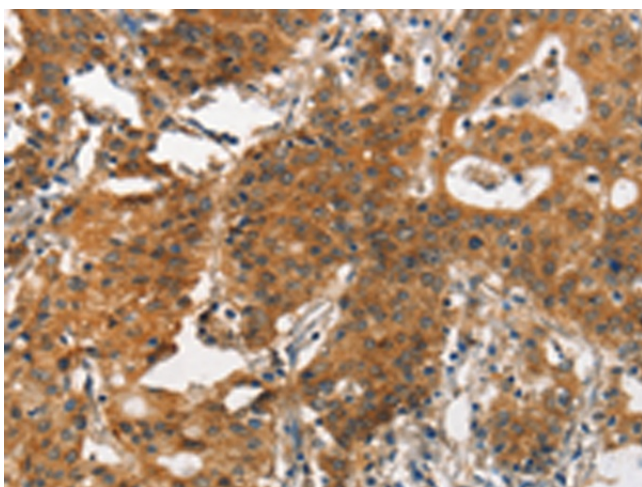


[View online »](#)

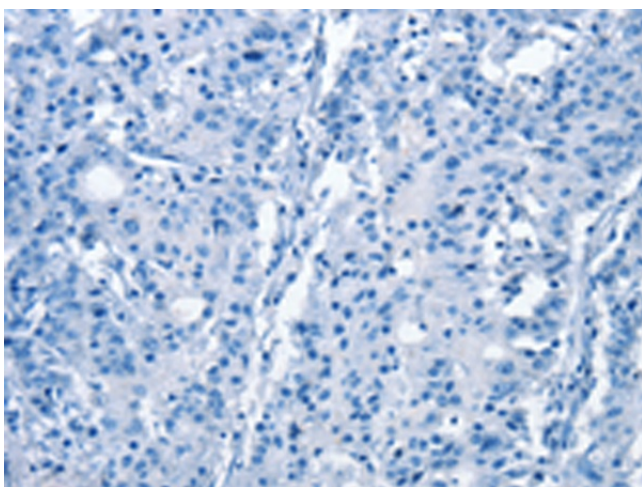
<b>Background:</b>	This gene encodes the alpha subunit of a transmembrane receptor for collagens and related proteins. The encoded protein forms a heterodimer with a beta subunit and mediates the adhesion of platelets and other cell types to the extracellular matrix. Loss of the encoded protein is associated with bleeding disorder platelet-type 9. Antibodies against this protein are found in several immune disorders, including neonatal alloimmune thrombocytopenia. This gene is located adjacent to a related alpha subunit gene. Alternative splicing results in multiple transcript variants.
<b>Synonyms:</b>	BR; CD49B; GPIa; HPA-5; VLA-2; VLAA2
<b>Protein Families:</b>	Druggable Genome, Transmembrane
<b>Protein Pathways:</b>	Arrhythmogenic right ventricular cardiomyopathy (ARVC), Dilated cardiomyopathy, ECM-receptor interaction, Focal adhesion, Hematopoietic cell lineage, Hypertrophic cardiomyopathy (HCM), Pathways in cancer, Regulation of actin cytoskeleton, Small cell lung cancer

**Product images:**

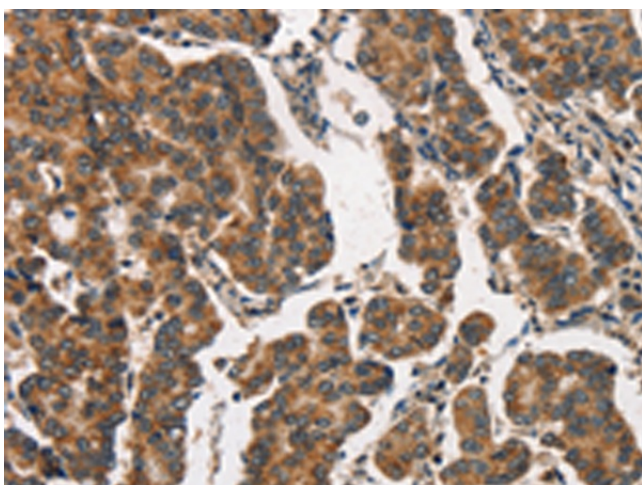
Gel: 6%SDS-PAGE  
Lysate: 40 µg  
Lane: A431 cells  
Primary antibody: TA350748 (ITGA2 Antibody) at dilution 1/300  
Secondary antibody: Goat anti rabbit IgG at 1/8000 dilution  
Exposure time: 30 seconds



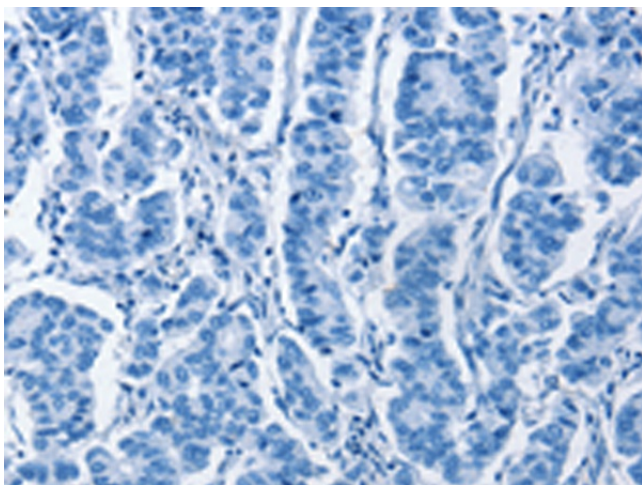
Immunohistochemistry of paraffin-embedded Human gastric cancer tissue using TA350748 (ITGA2 Antibody) at dilution 1/30 (Original magnification:  $\times 200$ )



Immunohistochemistry of paraffin-embedded Human gastric cancer tissue using TA350748 (ITGA2 Antibody) at dilution 1/30, treated with synthetic peptide. (Original magnification:  $\times 200$ )



Immunohistochemistry of paraffin-embedded Human breast cancer tissue using TA350748 (ITGA2 Antibody) at dilution 1/30 (Original magnification:  $\times 200$ )



Immunohistochemistry of paraffin-embedded Human breast cancer tissue using TA350748 (ITGA2 Antibody) at dilution 1/30, treated with synthetic peptide. (Original magnification:  $\times 200$ )