

Product datasheet for **TA350747**

CD117 Rabbit Polyclonal Antibody

Product data:

Product Type:	Primary Antibodies
Applications:	IHC
Recommended Dilution:	IHC: 25-100 Positive control: Human esophagus cancer Predicted cell location: Cytoplasm and Cell membrane
Reactivity:	Human, Mouse
Host:	Rabbit
Isotype:	IgG
Clonality:	Polyclonal
Immunogen:	Synthetic peptide of human KIT
Formulation:	pH7.4 PBS, 0.05% NaN ₃ , 40% Glycerol
Concentration:	lot specific
Purification:	Antigen affinity purification
Conjugation:	Unconjugated
Storage:	Store at -20°C as received.
Stability:	Stable for 12 months from date of receipt.
Gene Name:	KIT proto-oncogene receptor tyrosine kinase
Database Link:	NP_001087241 Entrez Gene 16590 Mouse Entrez Gene 3815 Human P10721
Background:	This gene encodes the human homolog of the proto-oncogene c-kit. C-kit was first identified as the cellular homolog of the feline sarcoma viral oncogene v-kit. This protein is a type 3 transmembrane receptor for MGF (mast cell growth factor, also known as stem cell factor). Mutations in this gene are associated with gastrointestinal stromal tumors, mast cell disease, acute myelogenous leukemia, and piebaldism. Multiple transcript variants encoding different isoforms have been found for this gene.
Synonyms:	C-Kit; CD117; PBT; SCFR

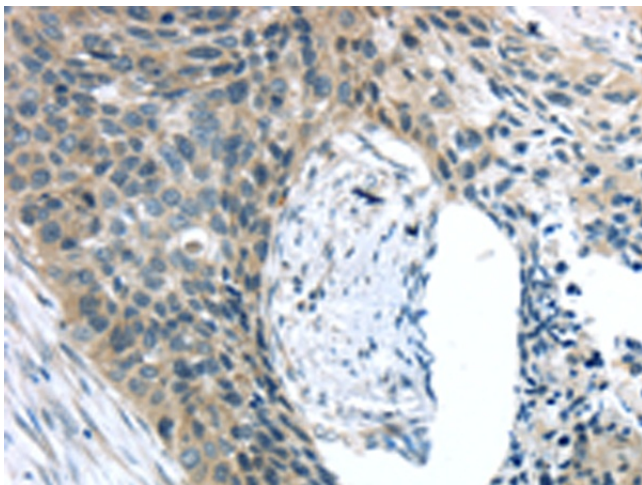


[View online »](#)

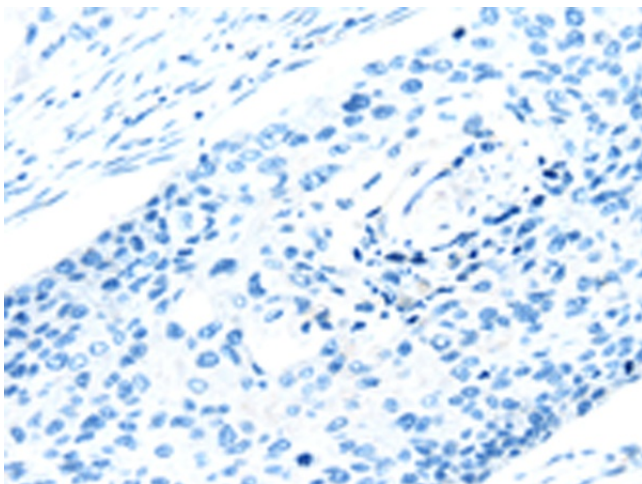
Protein Families: Adult stem cells, Druggable Genome, Embryonic stem cells, ES Cell Differentiation/IPS, Protein Kinase, Stem cell - Pluripotency, Transmembrane

Protein Pathways: Acute myeloid leukemia, Cytokine-cytokine receptor interaction, Endocytosis, Hematopoietic cell lineage, Melanogenesis, Pathways in cancer

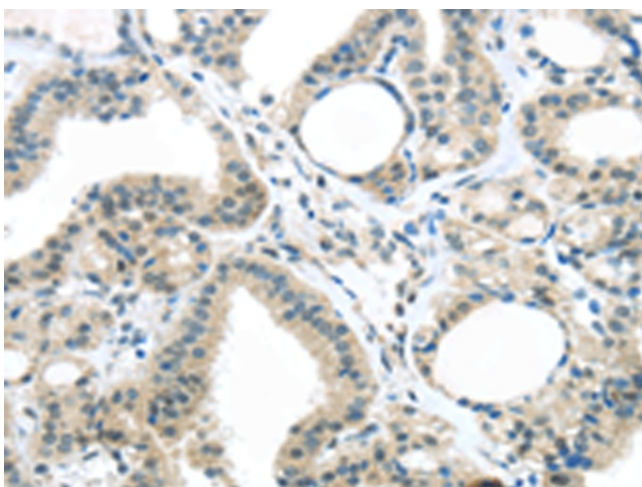
Product images:



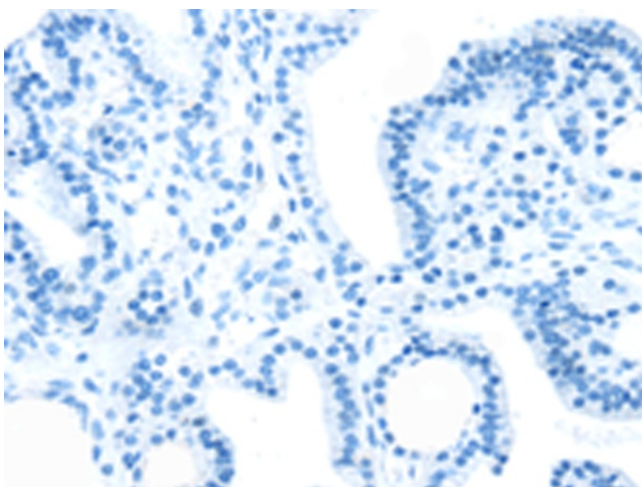
Immunohistochemistry of paraffin-embedded Human esophagus cancer tissue using TA350747 (KIT Antibody) at dilution 1/25 (Original magnification: $\times 200$)



Immunohistochemistry of paraffin-embedded Human esophagus cancer tissue using TA350747 (KIT Antibody) at dilution 1/25, treated with synthetic peptide. (Original magnification: $\times 200$)



Immunohistochemistry of paraffin-embedded Human thyroid cancer tissue using TA350747 (KIT Antibody) at dilution 1/25 (Original magnification: $\times 200$)



Immunohistochemistry of paraffin-embedded Human thyroid cancer tissue using TA350747 (KIT Antibody) at dilution 1/25, treated with synthetic peptide. (Original magnification: $\times 200$)