

## Product datasheet for **TA350746S**

### ARPC4 Rabbit Polyclonal Antibody

#### Product data:

Product Type:	Primary Antibodies
Applications:	IHC, WB
Recommended Dilution:	WB: 200-1000 WB positive control: Mouse brain tissue IHC: 25-100 Positive control: Human thyroid cancer Predicted cell location: cytoplasm
Reactivity:	Human, Mouse
Host:	Rabbit
Isotype:	IgG
Clonality:	Polyclonal
Immunogen:	Synthetic peptide of human ARPC4
Formulation:	pH7.4 PBS, 0.05% NaN <sub>3</sub> , 40% Glycerol
Purification:	Antigen affinity purification
Conjugation:	Unconjugated
Storage:	Store at -20°C as received.
Stability:	Stable for 12 months from date of receipt.
Gene Name:	actin related protein 2/3 complex subunit 4
Database Link:	<a href="#">NP_005709</a> <a href="#">Entrez Gene 68089 Mouse</a> <a href="#">Entrez Gene 10093 Human</a> <a href="#">P59998</a>

**Background:** This gene encodes one of seven subunits of the human Arp2/3 protein complex. This complex controls actin polymerization in cells and has been conserved throughout eukaryotic evolution. This gene encodes the p20 subunit, which is necessary for actin nucleation and high-affinity binding to F-actin. Alternative splicing results in multiple transcript variants. Naturally occurring read-through transcription exists between this gene and the downstream tubulin tyrosine ligase-like family, member 3 (TTL3), which results in the production of a fusion protein.

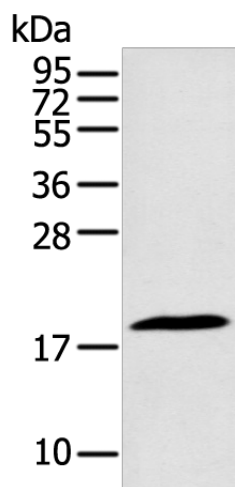


[View online »](#)

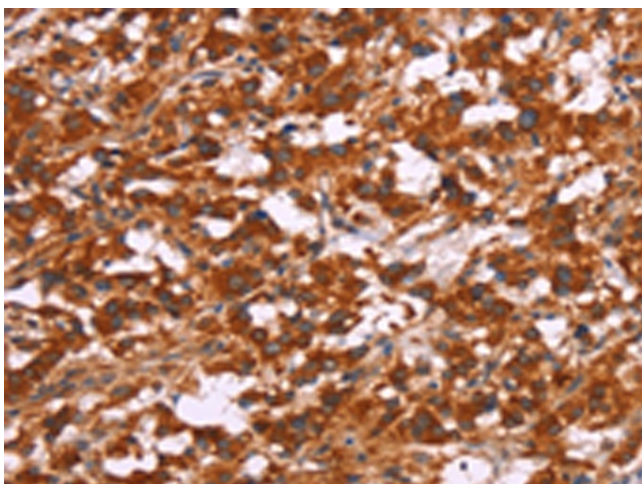
**Synonyms:** ARC20; P20-ARC

**Protein Pathways:** Fc gamma R-mediated phagocytosis, Pathogenic Escherichia coli infection, Regulation of actin cytoskeleton

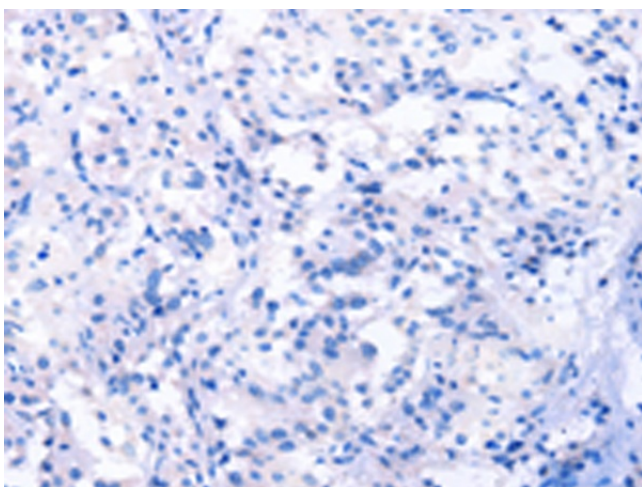
**Product images:**



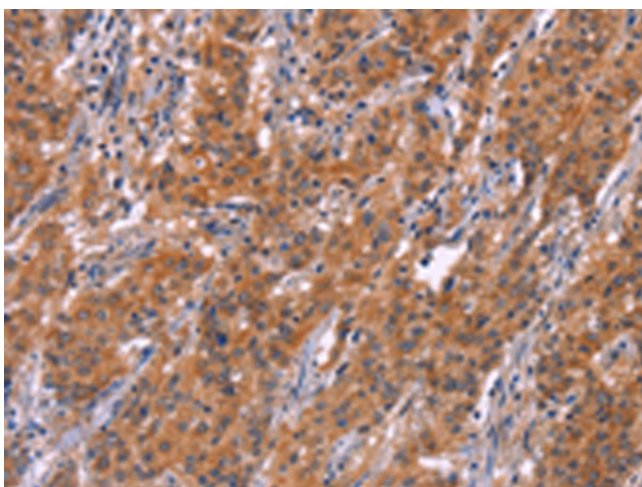
Gel: 12%SDS-PAGE  
Lysate: 40 µg  
Lane: Mouse brain tissue  
Primary antibody: [TA350746] (ARPC4 Antibody) at dilution 1/250  
Secondary antibody: Goat anti rabbit IgG at 1/8000 dilution  
Exposure time: 1 minute



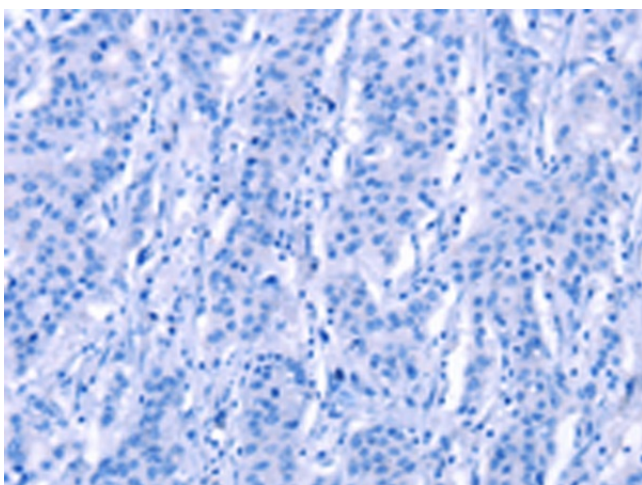
Immunohistochemistry of paraffin-embedded Human thyroid cancer tissue using [TA350746] (ARPC4 Antibody) at dilution 1/15 (Original magnification: x200)



Immunohistochemistry of paraffin-embedded Human thyroid cancer tissue using [TA350746] (ARPC4 Antibody) at dilution 1/15, treated with synthetic peptide. (Original magnification: ×200)



Immunohistochemistry of paraffin-embedded Human gastric cancer tissue using [TA350746] (ARPC4 Antibody) at dilution 1/15 (Original magnification: ×200)



Immunohistochemistry of paraffin-embedded Human gastric cancer tissue using [TA350746] (ARPC4 Antibody) at dilution 1/15, treated with synthetic peptide. (Original magnification: ×200)