

Product datasheet for **TA350745**

ARPC2 Rabbit Polyclonal Antibody

Product data:

Product Type:	Primary Antibodies
Applications:	IHC, WB
Recommended Dilution:	WB: 200-1000 WB positive control: 231 cells and human fetal brain tissue, NIH/3T3 and PC3 cells IHC: 25-100 Positive control: Human thyroid cancer Predicted cell location: Cytoplasm
Reactivity:	Human, Mouse, Rat
Host:	Rabbit
Isotype:	IgG
Clonality:	Polyclonal
Immunogen:	Synthetic peptide of human ARPC2
Formulation:	pH7.4 PBS, 0.05% NaN ₃ , 40% Glycerol
Concentration:	lot specific
Purification:	Antigen affinity purification
Conjugation:	Unconjugated
Storage:	Store at -20°C as received.
Stability:	Stable for 12 months from date of receipt.
Predicted Protein Size:	34 kDa
Gene Name:	actin related protein 2/3 complex subunit 2
Database Link:	NP_690601 Entrez Gene 76709 Mouse Entrez Gene 301511 Rat Entrez Gene 10109 Human O15144



[View online »](#)

Background:

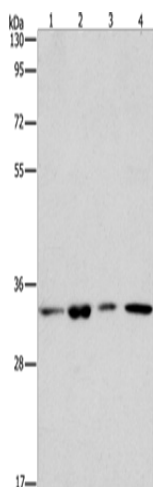
This gene encodes one of seven subunits of the human Arp2/3 protein complex. The Arp2/3 protein complex has been implicated in the control of actin polymerization in cells and has been conserved through evolution. The exact role of the protein encoded by this gene, the p34 subunit, has yet to be determined. Two alternatively spliced variants have been characterized to date. Additional alternatively spliced variants have been described but their full length nature has not been determined.

Synonyms:

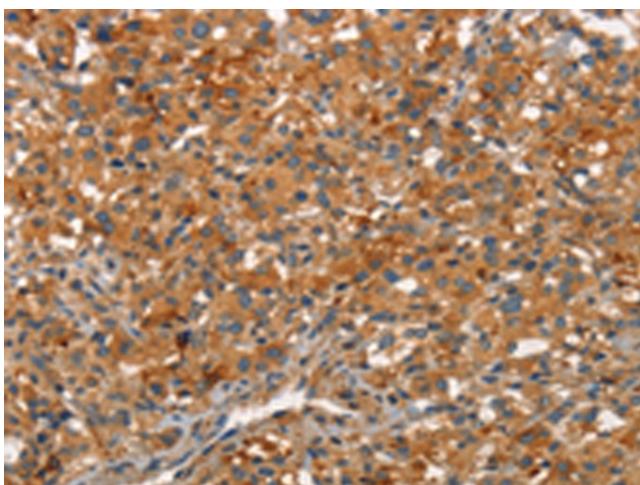
ARC34; p34-Arc; PNAS-139; PRO2446

Protein Pathways:

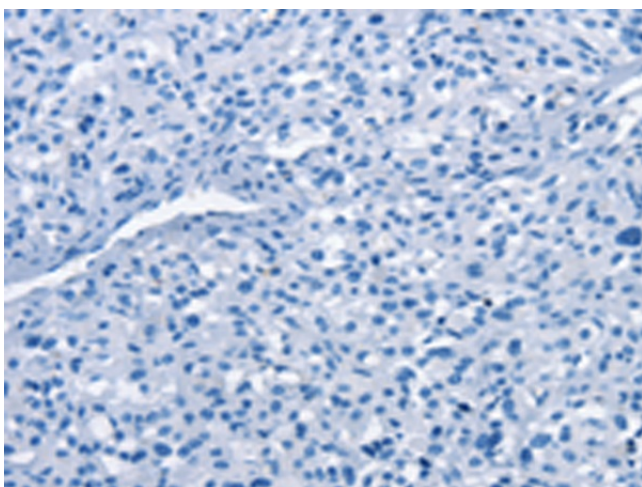
Fc gamma R-mediated phagocytosis, Pathogenic Escherichia coli infection, Regulation of actin cytoskeleton

Product images:

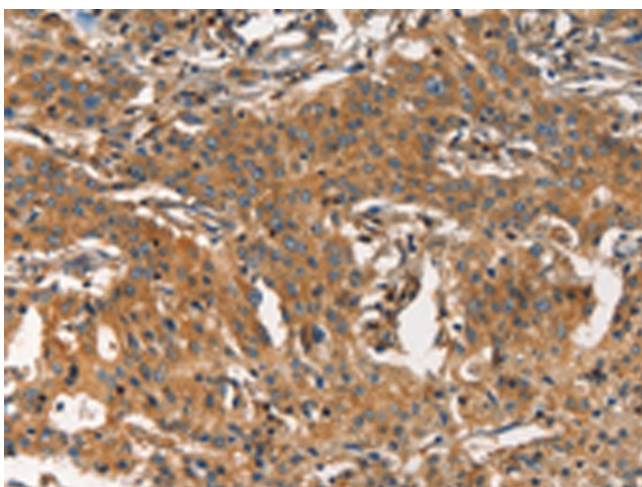
Gel: 8%SDS-PAGE
Lysate: 40 µg
Lane 1-4: 231 cells
human fetal brain tissue
NIH/3T3 cells
PC3 cells
Primary antibody: TA350745 (ARPC2 Antibody) at dilution 1/350
Secondary antibody: Goat anti rabbit IgG at 1/8000 dilution
Exposure time: 40 seconds



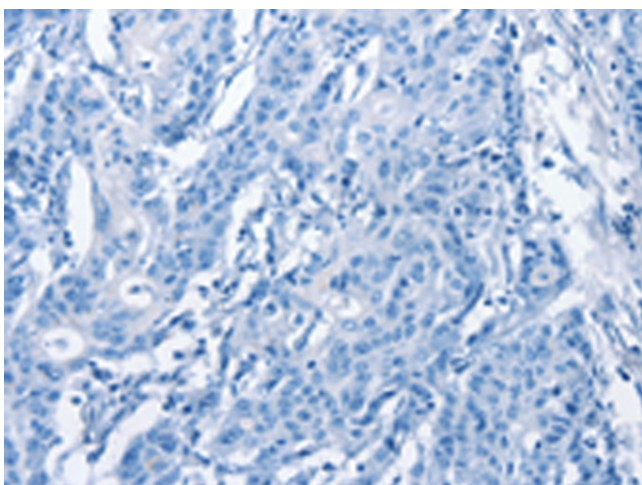
Immunohistochemistry of paraffin-embedded Human thyroid cancer tissue using TA350745 (ARPC2 Antibody) at dilution 1/30 (Original magnification: ×200)



Immunohistochemistry of paraffin-embedded Human thyroid cancer tissue using TA350745 (ARPC2 Antibody) at dilution 1/30, treated with synthetic peptide. (Original magnification: x200)



Immunohistochemistry of paraffin-embedded Human gastric cancer tissue using TA350745 (ARPC2 Antibody) at dilution 1/30 (Original magnification: x200)



Immunohistochemistry of paraffin-embedded Human gastric cancer tissue using TA350745 (ARPC2 Antibody) at dilution 1/30, treated with synthetic peptide. (Original magnification: x200)