

Product datasheet for **TA350735**

ANGPTL5 Rabbit Polyclonal Antibody

Product data:

Product Type:	Primary Antibodies
Applications:	IHC
Recommended Dilution:	IHC: 20-100 Positive control: Human liver cancer Predicted cell location: Cell membrane and Cytoplasm
Reactivity:	Human
Host:	Rabbit
Isotype:	IgG
Clonality:	Polyclonal
Immunogen:	Synthetic peptide of human ANGPTL5
Formulation:	pH7.4 PBS, 0.05% NaN ₃ , 40% Glycerol
Concentration:	lot specific
Purification:	Antigen affinity purification
Conjugation:	Unconjugated
Storage:	Store at -20°C as received.
Stability:	Stable for 12 months from date of receipt.
Gene Name:	angiopoietin like 5
Database Link:	NP_835228 Entrez Gene 253935 Human Q86XS5

Background: Angptl5 (angiopoietin-like 5) is a 388 amino acid secreted protein that contains one fibrinogen C-terminal domain and is primarily expressed in adult heart tissue. The gene encoding Angptl5 maps to human chromosome 11. With approximately 135 million base pairs and 1,400 genes, chromosome 11 comprises approximately 4% of human genomic DNA and is considered a gene and disease association dense chromosome. The chromosome 11 encoded Atm gene is important for regulation of cell cycle arrest and apoptosis following double strand DNA breaks. Atm mutation leads to the disorder known as ataxia-telangiectasia.

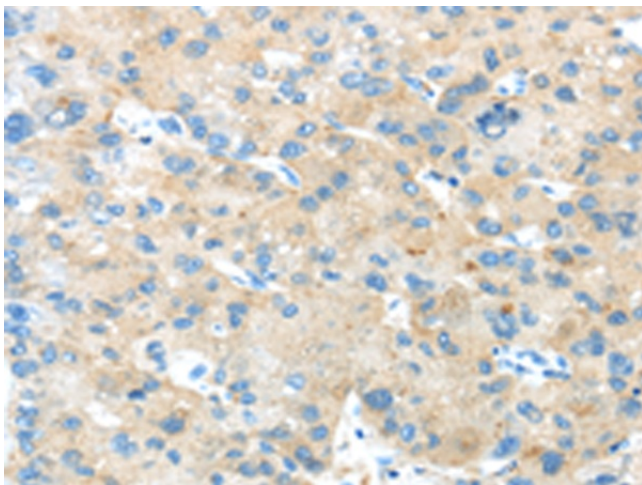


[View online »](#)

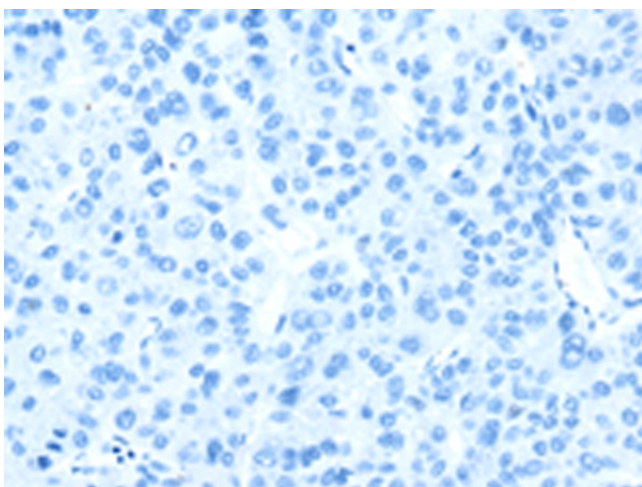
Synonyms: angiopoietin-like 5; fibrinogen-like

Protein Families: Druggable Genome, ES Cell Differentiation/IPS, Secreted Protein

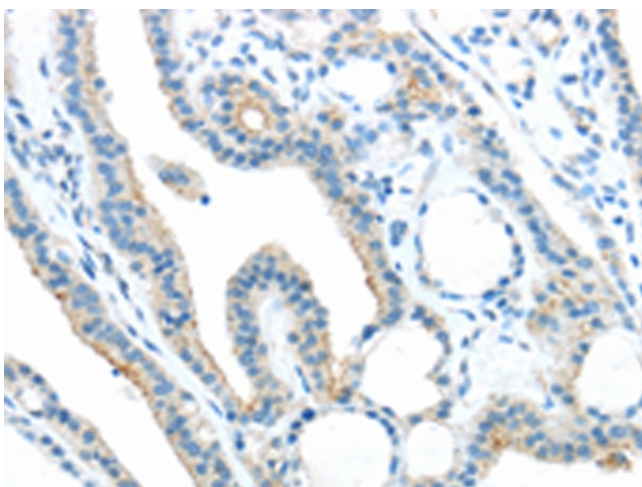
Product images:



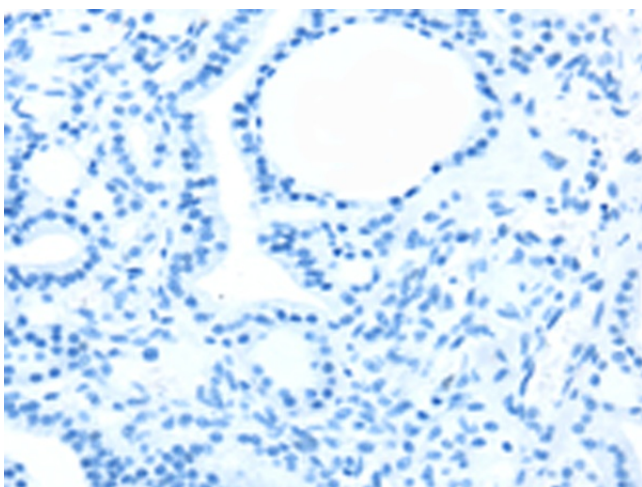
Immunohistochemistry of paraffin-embedded Human liver cancer tissue using TA350735 (ANGPTL5 Antibody) at dilution 1/25 (Original magnification: $\times 200$)



Immunohistochemistry of paraffin-embedded Human liver cancer tissue using TA350735 (ANGPTL5 Antibody) at dilution 1/25, treated with synthetic peptide. (Original magnification: $\times 200$)



Immunohistochemistry of paraffin-embedded Human thyroid cancer tissue using TA350735 (ANGPTL5 Antibody) at dilution 1/25 (Original magnification: $\times 200$)



Immunohistochemistry of paraffin-embedded Human thyroid cancer tissue using TA350735 (ANGPTL5 Antibody) at dilution 1/25, treated with synthetic peptide. (Original magnification: $\times 200$)