

## Product datasheet for **TA350731**

### ADAMTS18 Rabbit Polyclonal Antibody

#### Product data:

Product Type:	Primary Antibodies
Applications:	WB
Recommended Dilution:	WB: 200-1000 WB positive control: Human prostate tissue
Reactivity:	Human, Mouse
Host:	Rabbit
Isotype:	IgG
Clonality:	Polyclonal
Immunogen:	Synthetic peptide of human ADAMTS18
Formulation:	pH7.4 PBS, 0.05% NaN <sub>3</sub> , 40% Glycerol
Concentration:	lot specific
Purification:	Antigen affinity purification
Conjugation:	Unconjugated
Storage:	Store at -20°C as received.
Stability:	Stable for 12 months from date of receipt.
Predicted Protein Size:	135 kDa
Gene Name:	ADAM metallopeptidase with thrombospondin type 1 motif 18
Database Link:	<a href="#">NP_955387</a> <a href="#">Entrez Gene 208936 Mouse</a> <a href="#">Entrez Gene 170692 Human</a> <a href="#">Q8TE60</a>



[View online »](#)

**Background:**

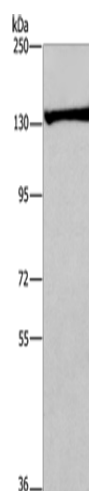
This gene encodes a member of the ADAMTS (a disintegrin and metalloproteinase with thrombospondin motifs) protein family. ADAMTS family members share several distinct protein modules, including a propeptide region, a metalloproteinase domain, a disintegrin-like domain, and a thrombospondin type 1 (TS) motif. Individual members of this family differ in the number of C-terminal TS motifs, and some have unique C-terminal domains. The protein encoded by this gene has a high sequence similarity to the protein encoded by gene ADAMTS16, another family member. It is thought to function as a tumor suppressor. Alternatively spliced transcript variants have been identified, but their biological validity has not been determined.

**Synonyms:**

ADAMTS21; KNO2; MMCAT

**Protein Families:**

Protease, Secreted Protein

**Product images:**

Gel: 6%SDS-PAGE  
Lysate: 40 µg  
Lane: Human prostate tissue  
Primary antibody: TA350731 (ADAMTS18 Antibody) at dilution 1/250  
Secondary antibody: Goat anti rabbit IgG at 1/8000 dilution  
Exposure time: 10 minutes