

Product datasheet for **TA350730**

Acid Phosphatase 2 (ACP2) Rabbit Polyclonal Antibody

Product data:

Product Type:	Primary Antibodies
Applications:	WB
Recommended Dilution:	WB: 200-1000 WB positive control: 293T and hela cells
Reactivity:	Human, Mouse, Rat
Host:	Rabbit
Isotype:	IgG
Clonality:	Polyclonal
Immunogen:	Synthetic peptide of human ACP2
Formulation:	pH7.4 PBS, 0.05% NaN ₃ , 40% Glycerol
Concentration:	lot specific
Purification:	Antigen affinity purification
Conjugation:	Unconjugated
Storage:	Store at -20°C as received.
Stability:	Stable for 12 months from date of receipt.
Predicted Protein Size:	48 kDa
Gene Name:	acid phosphatase 2, lysosomal
Database Link:	NP_001601 Entrez Gene 53 Human P11117
Background:	This gene encodes the beta subunit of lysosomal acid phosphatase (LAP). LAP is chemically and genetically distinct from red cell acid phosphatase. The encoded protein belongs to a family of distinct isoenzymes which hydrolyze orthophosphoric monoesters to alcohol and phosphate. Mutations in this gene or in the related alpha subunit gene cause acid phosphatase deficiency. Multiple alternatively spliced transcript variants encoding different isoforms have been identified for this gene.
Synonyms:	LAP

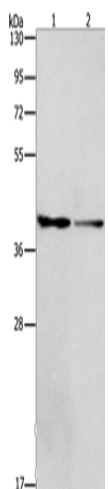


[View online »](#)

Protein Families: Druggable Genome, Transmembrane

Protein Pathways: Lysosome, Riboflavin metabolism

Product images:



Gel: 8%SDS-PAGE

Lysate: 40 µg

Lane 1-2: 293T cells

hela cells

Primary antibody: TA350730 (ACP2 Antibody) at dilution 1/400

Secondary antibody: Goat anti rabbit IgG at 1/8000 dilution

Exposure time: 3 minutes