

Product datasheet for **TA350728**

ACADVL Rabbit Polyclonal Antibody

Product data:

Product Type:	Primary Antibodies
Applications:	IHC, WB
Recommended Dilution:	WB: 200-1000 WB positive control: Hela cells IHC: 25-100 Positive control: Human thyroid cancer Predicted cell location: Cytoplasm
Reactivity:	Human
Host:	Rabbit
Isotype:	IgG
Clonality:	Polyclonal
Immunogen:	Synthetic peptide of human ACADVL
Formulation:	pH7.4 PBS, 0.05% NaN ₃ , 40% Glycerol
Concentration:	lot specific
Purification:	Antigen affinity purification
Conjugation:	Unconjugated
Storage:	Store at -20°C as received.
Stability:	Stable for 12 months from date of receipt.
Predicted Protein Size:	70 kDa
Gene Name:	acyl-CoA dehydrogenase, very long chain
Database Link:	NP_001029031 Entrez Gene 37 Human P49748



[View online »](#)

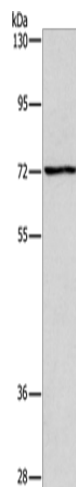
Background: The protein encoded by this gene is targeted to the inner mitochondrial membrane where it catalyzes the first step of the mitochondrial fatty acid beta-oxidation pathway. This acyl-Coenzyme A dehydrogenase is specific to long-chain and very-long-chain fatty acids. A deficiency in this gene product reduces myocardial fatty acid beta-oxidation and is associated with cardiomyopathy. Alternative splicing results in multiple transcript variants encoding different isoforms.

Synonyms: ACAD6; LCACD; VLCAD

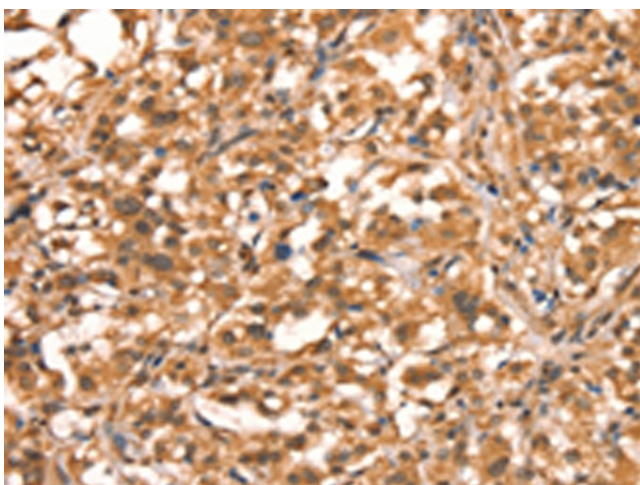
Protein Families: Druggable Genome

Protein Pathways: Fatty acid metabolism, Metabolic pathways

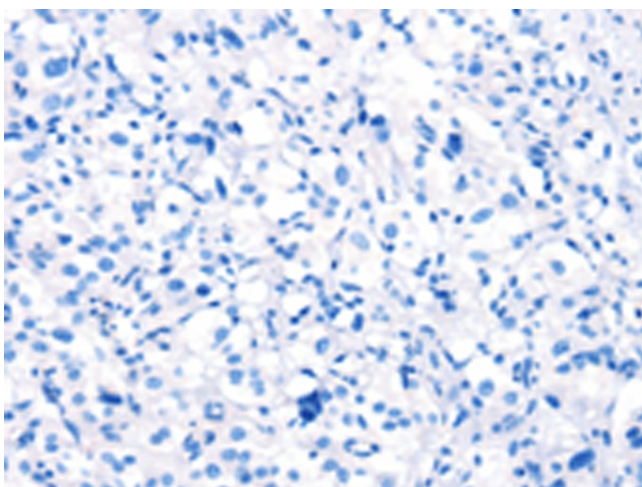
Product images:



Gel: 8%SDS-PAGE
Lysate: 40 µg
Lane: HeLa cells
Primary antibody: TA350728 (ACADVL Antibody) at dilution 1/200
Secondary antibody: Goat anti rabbit IgG at 1/8000 dilution
Exposure time: 5 seconds



Immunohistochemistry of paraffin-embedded Human thyroid cancer tissue using TA350728 (ACADVL Antibody) at dilution 1/15 (Original magnification: ×200)



Immunohistochemistry of paraffin-embedded Human thyroid cancer tissue using TA350728 (ACADVL Antibody) at dilution 1/15, treated with synthetic peptide. (Original magnification: $\times 200$)