

Product datasheet for **TA350724**

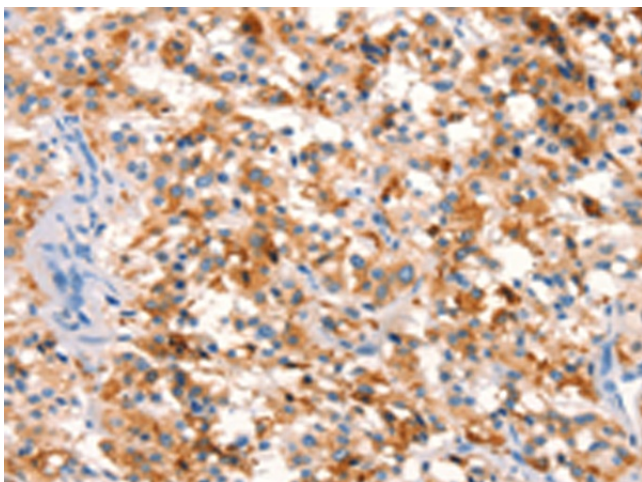
SPRN Rabbit Polyclonal Antibody

Product data:

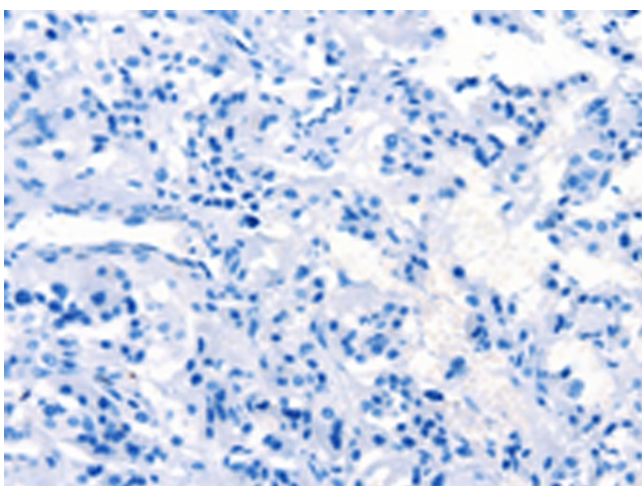
Product Type:	Primary Antibodies
Applications:	IHC
Recommended Dilution:	IHC: 25-100 Positive control: Human thyroid cancer Predicted cell location: Cytoplasm
Reactivity:	Human
Host:	Rabbit
Isotype:	IgG
Clonality:	Polyclonal
Immunogen:	Synthetic peptide of human SPRN
Formulation:	pH7.4 PBS, 0.05% NaN ₃ , 40% Glycerol
Concentration:	lot specific
Purification:	Antigen affinity purification
Conjugation:	Unconjugated
Storage:	Store at -20°C as received.
Stability:	Stable for 12 months from date of receipt.
Gene Name:	shadow of prion protein homolog (zebrafish)
Database Link:	NP_001012526 Entrez Gene 503542 Human Q5BIV9
Background:	SPRN (shadow of prion protein), also known as SHO or SHADOO, is a 151 amino acid cytoplasmic protein that is mainly expressed in brain. SPRN is considered a prion-like protein that has PrP(C)-like neuroprotective activity and may act as a modulator for the biological actions of normal and abnormal PrP. In humans, mutations in the gene encoding SPRN may be associated with variant and sporadic Creutzfeldt-Jakob disease, a degenerative neurological disorder that is incurable and invariably fatal.
Synonyms:	bA108K14.1; SHADOO; SHO


[View online »](#)

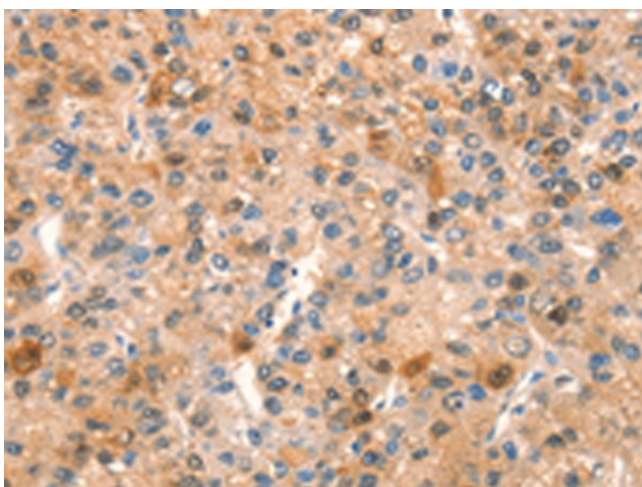
Product images:



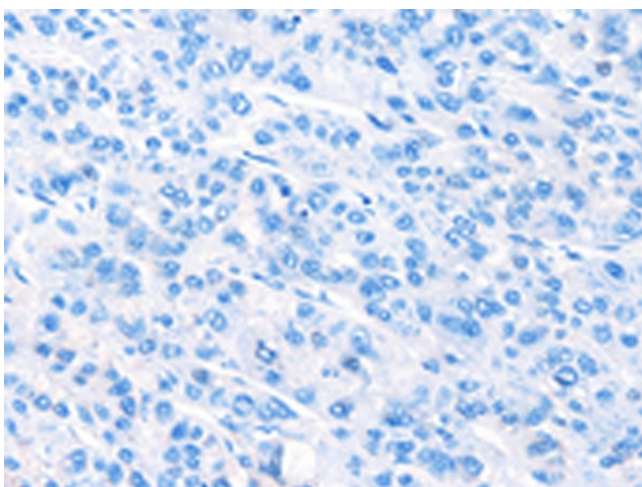
Immunohistochemistry of paraffin-embedded Human thyroid cancer tissue using TA350724 (SPRN Antibody) at dilution 1/15 (Original magnification: ×200)



Immunohistochemistry of paraffin-embedded Human thyroid cancer tissue using TA350724 (SPRN Antibody) at dilution 1/15, treated with synthetic peptide. (Original magnification: ×200)



Immunohistochemistry of paraffin-embedded Human liver cancer tissue using TA350724 (SPRN Antibody) at dilution 1/15 (Original magnification: ×200)



Immunohistochemistry of paraffin-embedded Human liver cancer tissue using TA350724 (SPRN Antibody) at dilution 1/15, treated with synthetic peptide. (Original magnification: ×200)