

Product datasheet for **TA350723**

Peroxiredoxin 2 (PRDX2) Rabbit Polyclonal Antibody

Product data:

Product Type:	Primary Antibodies
Applications:	IHC, WB
Recommended Dilution:	WB: 500-2000 WB positive control: 293T, hela, PC3 and NIH/3T3 cells IHC: 100-300 Positive control: Human liver cancer Predicted cell location: Cytoplasm
Reactivity:	Human, Mouse, Rat
Host:	Rabbit
Isotype:	IgG
Clonality:	Polyclonal
Immunogen:	Synthetic peptide of human PRDX2
Formulation:	pH7.4 PBS, 0.05% NaN ₃ , 40% Glycerol
Concentration:	lot specific
Purification:	Antigen affinity purification
Conjugation:	Unconjugated
Storage:	Store at -20°C as received.
Stability:	Stable for 12 months from date of receipt.
Predicted Protein Size:	22 kDa
Gene Name:	peroxiredoxin 2
Database Link:	NP_859428 Entrez Gene 21672 Mouse Entrez Gene 29338 Rat Entrez Gene 7001 Human P32119



[View online »](#)

Background:

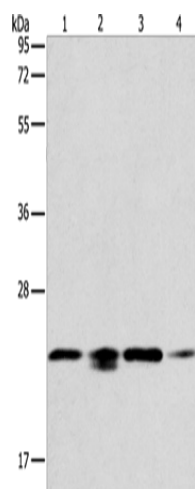
This gene encodes a member of the peroxiredoxin family of antioxidant enzymes, which reduce hydrogen peroxide and alkyl hydroperoxides. The encoded protein plays an antioxidant protective role in cells, and it may contribute to the antiviral activity of CD8(+) T-cells. The crystal structure of this protein has been resolved to 2.7 angstroms. This protein prevents hemolytic anemia from oxidative stress by stabilizing hemoglobin, thus making this gene a therapeutic target for patients with hemolytic anemia. This protein may have a proliferative effect and play a role in cancer development or progression. Related pseudogenes have been identified on chromosomes 5, 6, 10 and 13.

Synonyms:

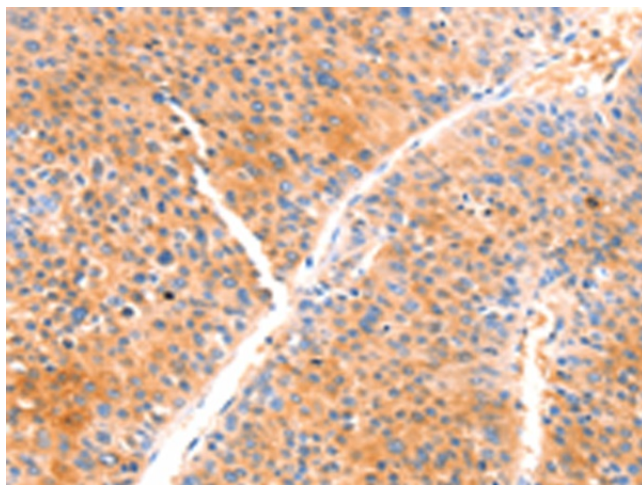
NKEFB; PRP; PRX2; PRXII; PTX1; TDPX1; TPX1; TSA

Protein Families:

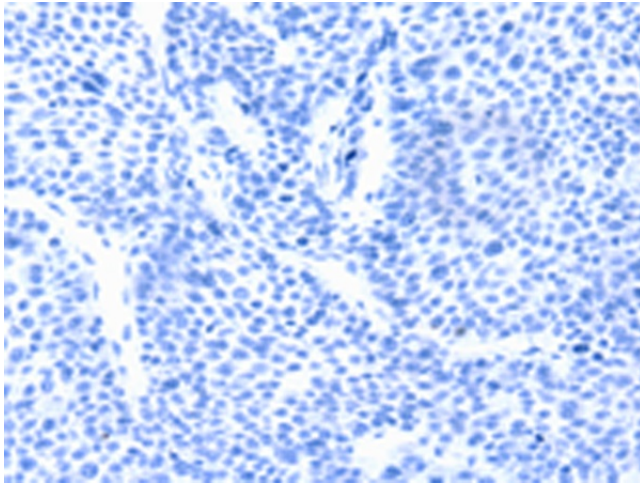
Druggable Genome

Product images:

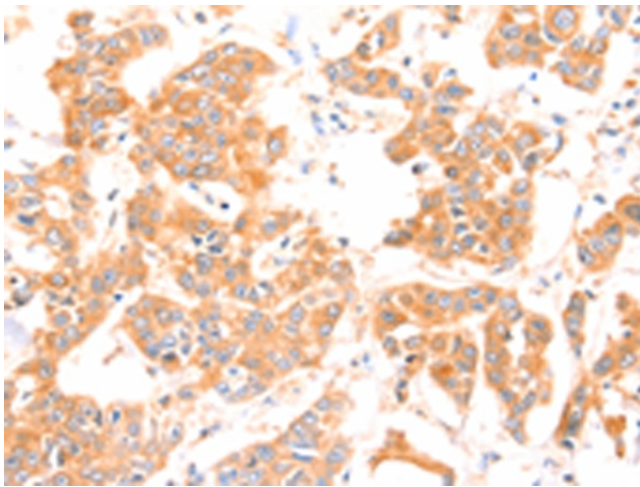
Gel: 12%SDS-PAGE
Lysate: 40 µg
Lane 1-4: 293T cells
hela cells
PC3 cells
NIH/3T3 cells
Primary antibody: TA350723 (PRDX2 Antibody) at dilution 1/750
Secondary antibody: Goat anti rabbit IgG at 1/8000 dilution
Exposure time: 10 seconds



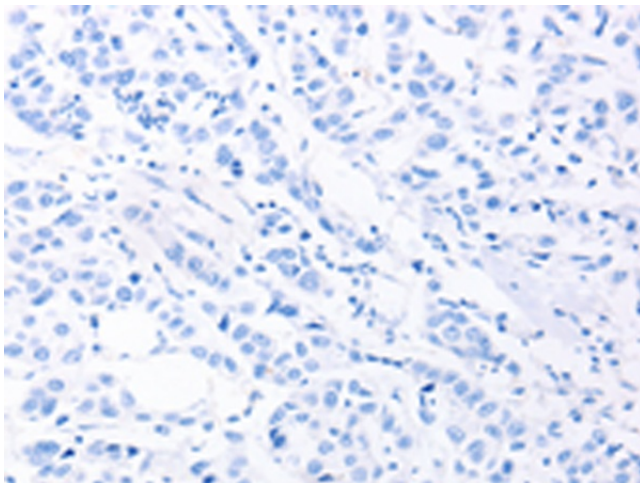
Immunohistochemistry of paraffin-embedded Human liver cancer tissue using TA350723 (PRDX2 Antibody) at dilution 1/80 (Original magnification: x200)



Immunohistochemistry of paraffin-embedded Human liver cancer tissue using TA350723 (PRDX2 Antibody) at dilution 1/80, treated with synthetic peptide. (Original magnification: $\times 200$)



Immunohistochemistry of paraffin-embedded Human breast cancer tissue using TA350723 (PRDX2 Antibody) at dilution 1/80 (Original magnification: $\times 200$)



Immunohistochemistry of paraffin-embedded Human breast cancer tissue using TA350723 (PRDX2 Antibody) at dilution 1/80, treated with synthetic peptide. (Original magnification: $\times 200$)