

## Product datasheet for **TA350721S**

### PKD2L1 Rabbit Polyclonal Antibody

#### Product data:

Product Type:	Primary Antibodies
Applications:	IHC
Recommended Dilution:	IHC: 25-100 Positive control: Human lung cancer Predicted cell location: Cytoplasm
Reactivity:	Human
Host:	Rabbit
Isotype:	IgG
Clonality:	Polyclonal
Immunogen:	Synthetic peptide of human PKD2L1
Formulation:	pH7.4 PBS, 0.05% NaN <sub>3</sub> , 40% Glycerol
Purification:	Antigen affinity purification
Conjugation:	Unconjugated
Storage:	Store at -20°C as received.
Stability:	Stable for 12 months from date of receipt.
Gene Name:	polycystin 2 like 1, transient receptor potential cation channel
Database Link:	<a href="#">NP_057196</a> <a href="#">Entrez Gene 9033 Human</a> <a href="#">Q9P0L9</a>

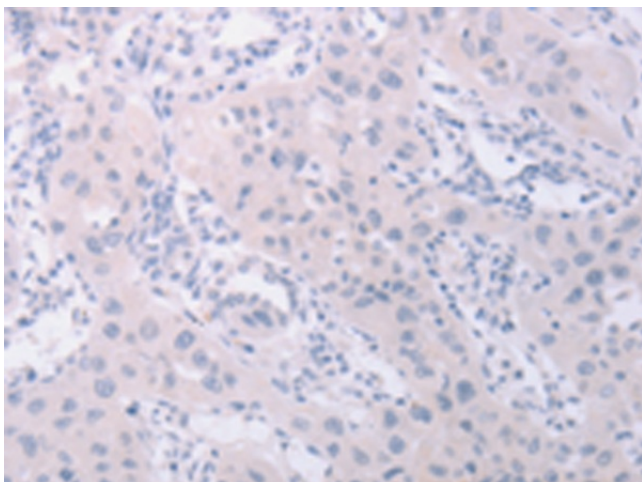
**Background:** This gene encodes a member of the polycystin protein family. The encoded protein contains multiple transmembrane domains, and cytoplasmic N- and C-termini. The protein may be an integral membrane protein involved in cell-cell/matrix interactions. This protein functions as a calcium-regulated nonselective cation channel. Two transcript variants encoding different isoforms have been found for this gene.

**Synonyms:** PCL; PKD2L; PKDL; TRPP3

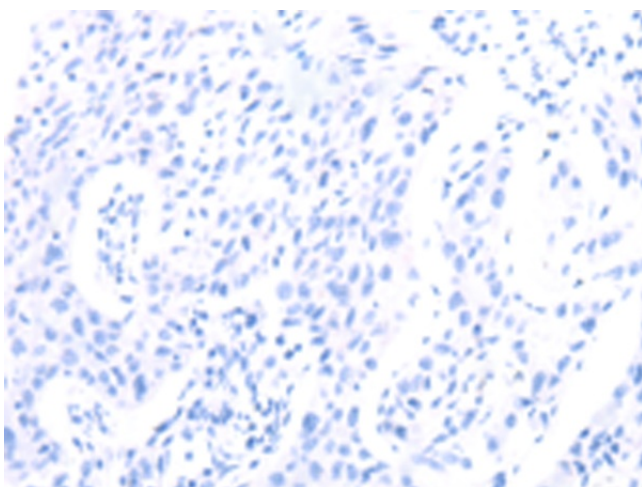
**Protein Families:** Druggable Genome, Ion Channels: Transient receptor potential, Transmembrane



[View online »](#)

**Product images:**

Immunohistochemistry of paraffin-embedded Human lung cancer tissue using [TA350721] (PKD2L1 Antibody) at dilution 1/40 (Original magnification:  $\times 200$ )



Immunohistochemistry of paraffin-embedded Human lung cancer tissue using [TA350721] (PKD2L1 Antibody) at dilution 1/40, treated with synthetic peptide. (Original magnification:  $\times 200$ )