

Product datasheet for **TA350717**

CHRNA1 Rabbit Polyclonal Antibody

Product data:

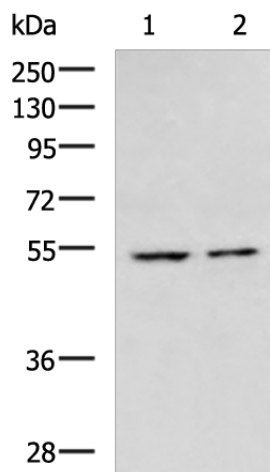
Product Type:	Primary Antibodies
Applications:	IHC, WB
Recommended Dilution:	WB: 500-2000 WB positive control: Jurakt and MCF-7 cell lysates IHC: 50-200 Positive control: Human esophagus cancer Predicted cell location: Cell membrane
Reactivity:	Human, Mouse, Rat
Host:	Rabbit
Isotype:	IgG
Clonality:	Polyclonal
Immunogen:	Synthetic peptide of human CHRNA1
Formulation:	pH7.4 PBS, 0.05% NaN ₃ , 40% Glycerol
Concentration:	lot specific
Purification:	Antigen affinity purification
Conjugation:	Unconjugated
Storage:	Store at -20°C as received.
Stability:	Stable for 12 months from date of receipt.
Predicted Protein Size:	55 kDa
Gene Name:	cholinergic receptor nicotinic alpha 1 subunit
Database Link:	NP_001034612 Entrez Gene 11435 Mouse Entrez Gene 79557 Rat Entrez Gene 1134 Human P02708
Background:	The muscle acetylcholine receptor consists of 5 subunits of 4 different types: 2 alpha subunits and 1 each of the beta, gamma, and delta subunits. This gene encodes an alpha subunit that plays a role in acetylcholine binding/channel gating. Alternatively spliced transcript variants encoding different isoforms have been identified.
Synonyms:	ACHRA; ACHRD; CHRNA; CMS1A; CMS1B; CMS2A; FCCMS; SCCMS



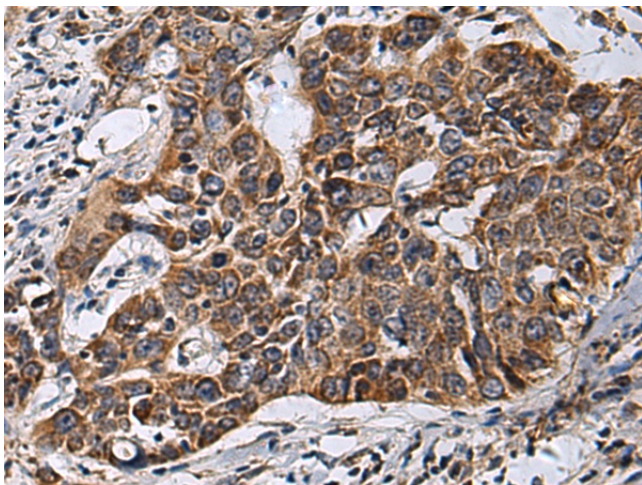
[View online »](#)

Protein Families: Druggable Genome, Ion Channels: Cys-loop Receptors, Transmembrane

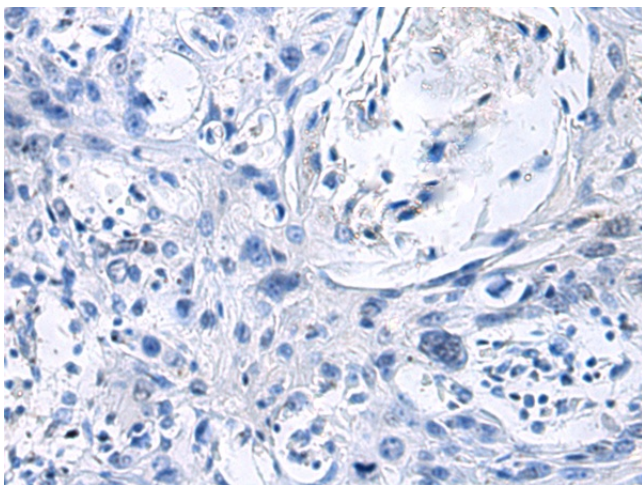
Product images:



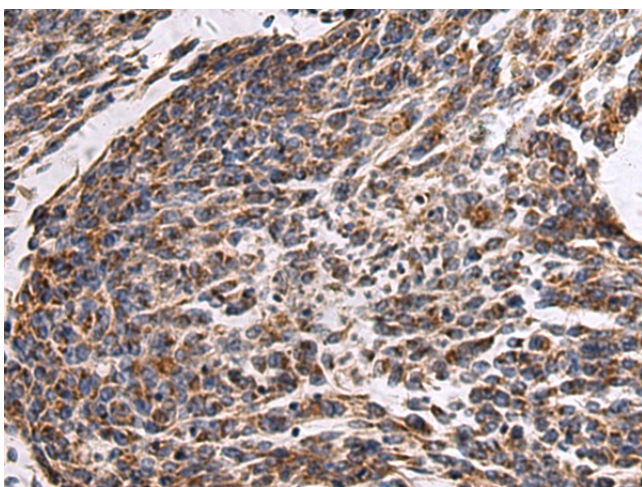
Gel: 8%SDS-PAGE
Lysate: 40 μ g
Lane 1-2: Jurakt and MCF-7 cell lysates
Primary antibody: TA350717 (CHRNA1 Antibody)
at dilution 1/600
Secondary antibody: Goat anti rabbit IgG at
1/5000 dilution
Exposure time: 3 minutes



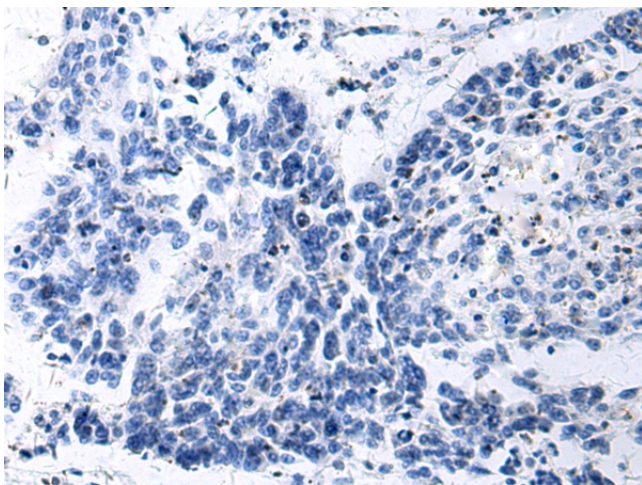
Immunohistochemistry of paraffin-embedded
Human esophagus cancer tissue using TA350717
(CHRNA1 Antibody) at dilution 1/25 (Original
magnification: \times 200)



Immunohistochemistry of paraffin-embedded Human esophagus cancer tissue using TA350717 (CHRNA1 Antibody) at dilution 1/25, treated with synthetic peptide. (Original magnification: ×200)



Immunohistochemistry of paraffin-embedded Human colorectal cancer tissue using TA350717 (CHRNA1 Antibody) at dilution 1/25 (Original magnification: ×200)



Immunohistochemistry of paraffin-embedded Human colorectal cancer tissue using TA350717 (CHRNA1 Antibody) at dilution 1/25, treated with synthetic peptide. (Original magnification: ×200)