

## Product datasheet for **TA350710S**

### MRP2 (ABCC2) Rabbit Polyclonal Antibody

#### Product data:

|                       |   |
|-----------------------|---|
| Product Type:         | Primary Antibodies  |
| Applications:         | IHC   |
| Recommended Dilution: | IHC: 30-150<br>Positive control: Human liver cancer<br>Predicted cell location: Cytoplasm     |
| Reactivity:           | Human   |
| Host:                 | Rabbit  |
| Isotype:              | IgG   |
| Clonality:            | Polyclonal  |
| Immunogen:            | Synthetic peptide of human ABCC2  |
| Formulation:          | pH7.4 PBS, 0.05% NaN <sub>3</sub> , 40% Glycerol  |
| Purification:         | Antigen affinity purification   |
| Conjugation:          | Unconjugated  |
| Storage:              | Store at -20°C as received.   |
| Stability:            | Stable for 12 months from date of receipt.  |
| Gene Name:            | ATP binding cassette subfamily C member 2   |
| Database Link:        | <a href="#">NP_000383</a><br><a href="#">Entrez Gene 1244 Human</a><br><a href="#">Q92887</a> |

**Background:** The protein encoded by this gene is a member of the superfamily of ATP-binding cassette (ABC) transporters. ABC proteins transport various molecules across extra- and intra-cellular membranes. ABC genes are divided into seven distinct subfamilies (ABC1, MDR/TAP, MRP, ALD, OABP, GCN20, White). This protein is a member of the MRP subfamily which is involved in multi-drug resistance. This protein is expressed in the canalicular (apical) part of the hepatocyte and functions in biliary transport. Substrates include anticancer drugs such as vinblastine; therefore, this protein appears to contribute to drug resistance in mammalian cells. Several different mutations in this gene have been observed in patients with Dubin-Johnson syndrome (DJS), an autosomal recessive disorder characterized by conjugated hyperbilirubinemia.



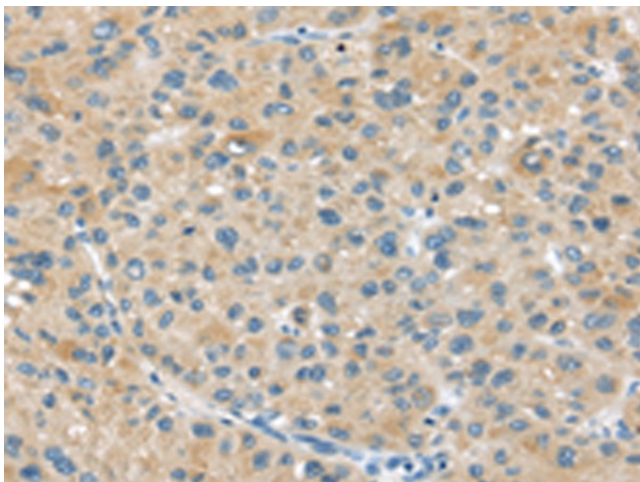
[View online »](#)

**Synonyms:** ABC30; CMOAT; cMRP; DJS; MRP2

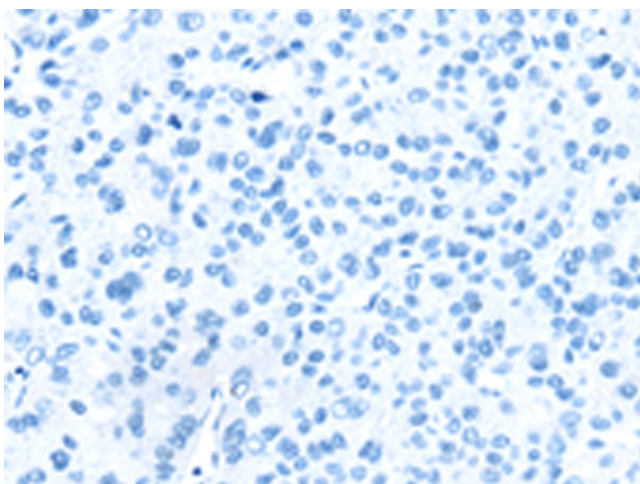
**Protein Families:** Druggable Genome, Transmembrane

**Protein Pathways:** ABC transporters

**Product images:**



Immunohistochemistry of paraffin-embedded Human liver cancer tissue using [TA350710] (ABCC2 Antibody) at dilution 1/45 (Original magnification:  $\times 200$ )



Immunohistochemistry of paraffin-embedded Human liver cancer tissue using [TA350710] (ABCC2 Antibody) at dilution 1/45, treated with synthetic peptide. (Original magnification:  $\times 200$ )