

## Product datasheet for **TA350703S**

### **LAIR2 Rabbit Polyclonal Antibody**

#### **Product data:**

Product Type:	Primary Antibodies
Applications:	IHC, WB
Recommended Dilution:	WB: 1000-5000 WB positive control: Mouse Pancreas tissue lysate IHC: 50-200 Positive control: Human liver cancer Predicted cell location: Secreted
Reactivity:	Human, Mouse
Host:	Rabbit
Isotype:	IgG
Clonality:	Polyclonal
Immunogen:	Synthetic peptide of human LAIR2
Formulation:	pH7.4 PBS, 0.05% NaN <sub>3</sub> , 40% Glycerol
Purification:	Antigen affinity purification
Conjugation:	Unconjugated
Storage:	Store at -20°C as received.
Stability:	Stable for 12 months from date of receipt.
Predicted Protein Size:	16 kDa
Gene Name:	leukocyte associated immunoglobulin like receptor 2
Database Link:	<a href="#">NP_067154</a> <a href="#">Entrez Gene 3904 Human</a> <a href="#">Q6ISS4</a>



[View online »](#)

**Background:**

The protein encoded by this gene is a member of the immunoglobulin superfamily. It was identified by its similarity to leukocyte-associated immunoglobulin-like receptor 1, a membrane-bound receptor that modulates innate immune response. The protein encoded by this locus is a soluble receptor that may play roles in both inhibition of collagen-induced platelet aggregation and vessel formation during placental implantation. This gene maps to a region of 19q13.4, termed the leukocyte receptor cluster, which contains 29 genes in the immunoglobulin superfamily.

**Synonyms:**

CD306

**Protein Families:**

Secreted Protein

**Product images:**

kDa

95 —

72 —

55 —

36 —

28 —

17 —

10 —



Gel: 12%SDS-PAGE

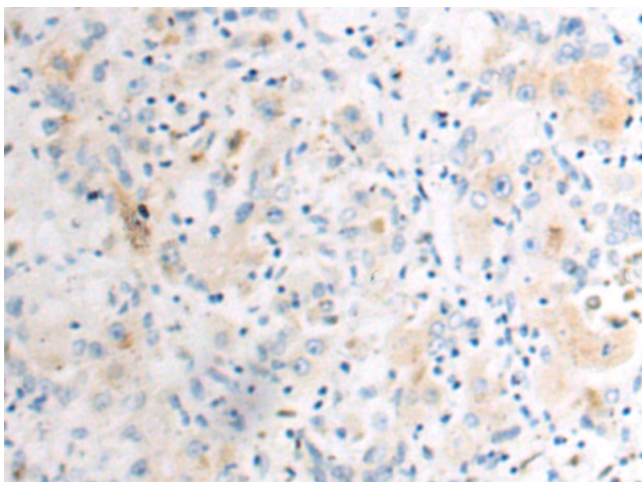
Lysate: 40 µg

Lane: Mouse Pancreas tissue lysate

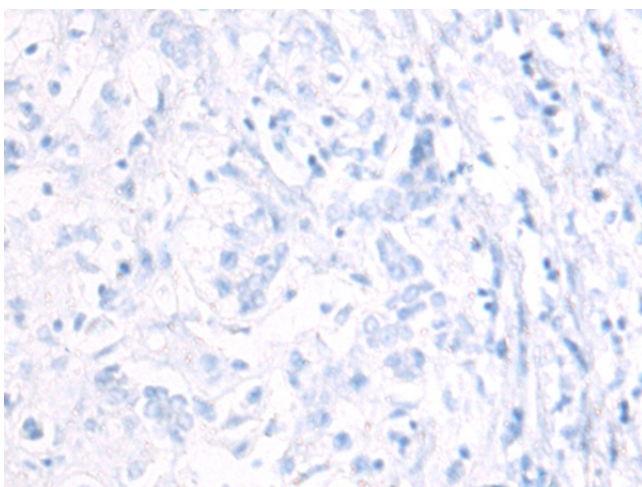
Primary antibody: [TA350703] (LAIR2 Antibody) at dilution 1/1000

Secondary antibody: Goat anti rabbit IgG at 1/5000 dilution

Exposure time: 10 seconds



Immunohistochemistry of paraffin-embedded Human liver cancer tissue using [TA350703] (LAIR2 Antibody) at dilution 1/60 (Original magnification: ×200)



Immunohistochemistry of paraffin-embedded Human liver cancer tissue using [TA350703] (LAIR2 Antibody) at dilution 1/60, treated with synthetic peptide. (Original magnification: ×200)