

## Product datasheet for **TA350701S**

### IRS2 Rabbit Polyclonal Antibody

#### Product data:

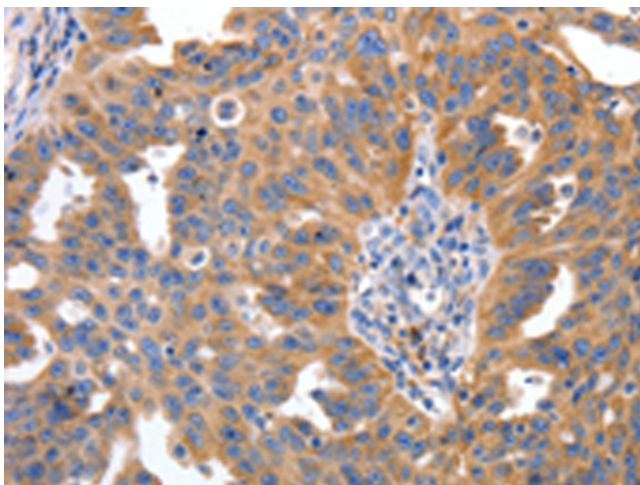
Product Type:	Primary Antibodies
Applications:	IHC
Recommended Dilution:	IHC: 50-200 Positive control: Human ovarian cancer Predicted cell location: Cytoplasm
Reactivity:	Human, Mouse
Host:	Rabbit
Isotype:	IgG
Clonality:	Polyclonal
Immunogen:	Synthetic peptide of human IRS2
Formulation:	pH7.4 PBS, 0.05% NaN <sub>3</sub> , 40% Glycerol
Purification:	Antigen affinity purification
Conjugation:	Unconjugated
Storage:	Store at -20°C as received.
Stability:	Stable for 12 months from date of receipt.
Gene Name:	insulin receptor substrate 2
Database Link:	<a href="#">NP_003740</a> <a href="#">Entrez Gene 384783 Mouse</a> <a href="#">Entrez Gene 8660 Human</a> <a href="#">Q9Y4H2</a>
Background:	This gene encodes the insulin receptor substrate 2, a cytoplasmic signaling molecule that mediates effects of insulin, insulin-like growth factor 1, and other cytokines by acting as a molecular adaptor between diverse receptor tyrosine kinases and downstream effectors. The product of this gene is phosphorylated by the insulin receptor tyrosine kinase upon receptor stimulation, as well as by an interleukin 4 receptor-associated kinase in response to IL4 treatment.
Synonyms:	IRS-2
Protein Families:	Druggable Genome



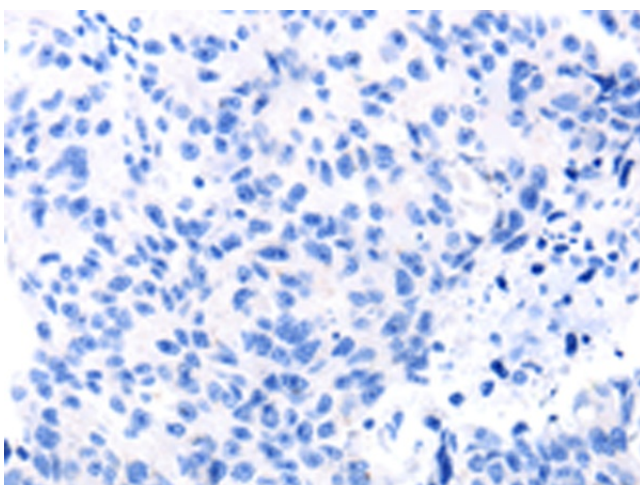
[View online »](#)

**Protein Pathways:** Adipocytokine signaling pathway, Insulin signaling pathway, Neurotrophin signaling pathway, Type II diabetes mellitus

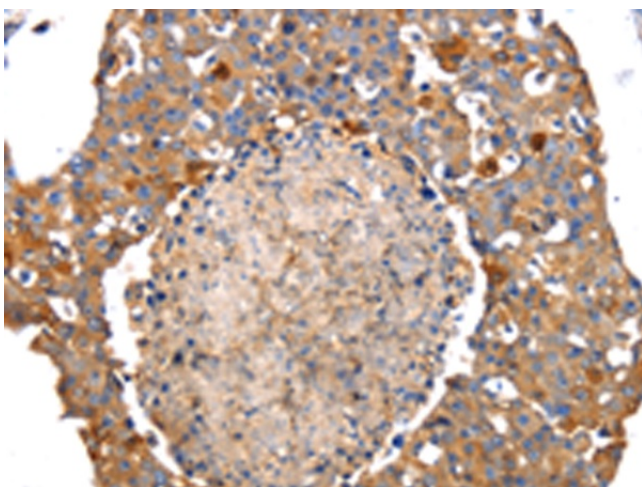
**Product images:**



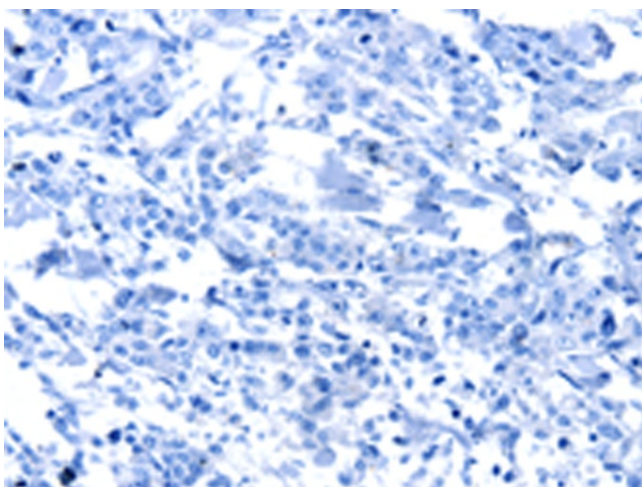
Immunohistochemistry of paraffin-embedded Human ovarian cancer tissue using [TA350701] (IRS2 Antibody) at dilution 1/100 (Original magnification:  $\times 200$ )



Immunohistochemistry of paraffin-embedded Human ovarian cancer tissue using [TA350701] (IRS2 Antibody) at dilution 1/100, treated with synthetic peptide. (Original magnification:  $\times 200$ )



Immunohistochemistry of paraffin-embedded Human breast cancer tissue using [TA350701] (IRS2 Antibody) at dilution 1/100 (Original magnification:  $\times 200$ )



Immunohistochemistry of paraffin-embedded Human breast cancer tissue using [TA350701] (IRS2 Antibody) at dilution 1/100, treated with synthetic peptide. (Original magnification:  $\times 200$ )