

## Product datasheet for **TA350700S**

### **IQGAP2 Rabbit Polyclonal Antibody**

#### **Product data:**

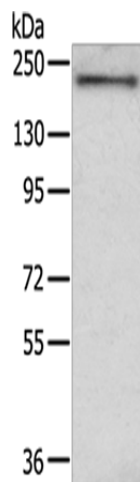
<b>Product Type:</b>	Primary Antibodies
<b>Applications:</b>	IHC, WB
<b>Recommended Dilution:</b>	WB: 200-1000 WB positive control: Human fetal liver tissue IHC: 30-150 Positive control: Human liver cancer Predicted cell location: Cytoplasm and Cell membrane
<b>Reactivity:</b>	Human, Mouse
<b>Host:</b>	Rabbit
<b>Isotype:</b>	IgG
<b>Clonality:</b>	Polyclonal
<b>Immunogen:</b>	Synthetic peptide of human IQGAP2
<b>Formulation:</b>	pH7.4 PBS, 0.05% NaN <sub>3</sub> , 40% Glycerol
<b>Purification:</b>	Antigen affinity purification
<b>Conjugation:</b>	Unconjugated
<b>Storage:</b>	Store at -20°C as received.
<b>Stability:</b>	Stable for 12 months from date of receipt.
<b>Predicted Protein Size:</b>	181 kDa
<b>Gene Name:</b>	IQ motif containing GTPase activating protein 2
<b>Database Link:</b>	<a href="#">NP_006624</a> <a href="#">Entrez Gene 544963 Mouse</a> <a href="#">Entrez Gene 10788 Human</a> <a href="#">Q13576</a>
<b>Background:</b>	This gene encodes a member of the IQGAP family. The protein contains three IQ domains, one calponin homology domain, one Ras-GAP domain and one WW domain. It interacts with components of the cytoskeleton, with cell adhesion molecules, and with several signaling molecules to regulate cell morphology and motility.
<b>Synonyms:</b>	IQ motif containing GTPase activating protein 2
<b>Protein Families:</b>	Druggable Genome



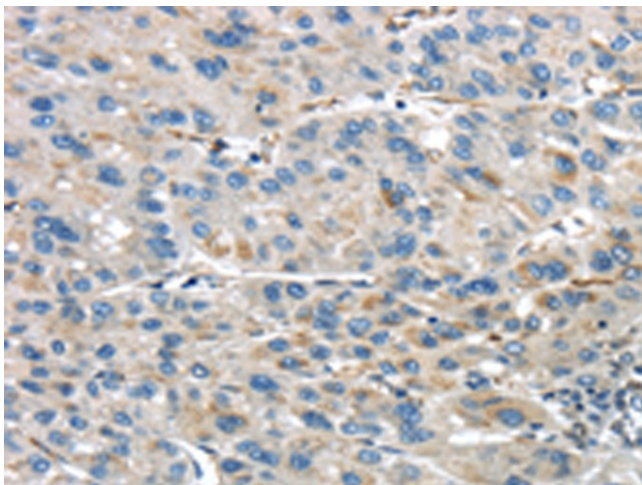
[View online »](#)

Protein Pathways: Regulation of actin cytoskeleton

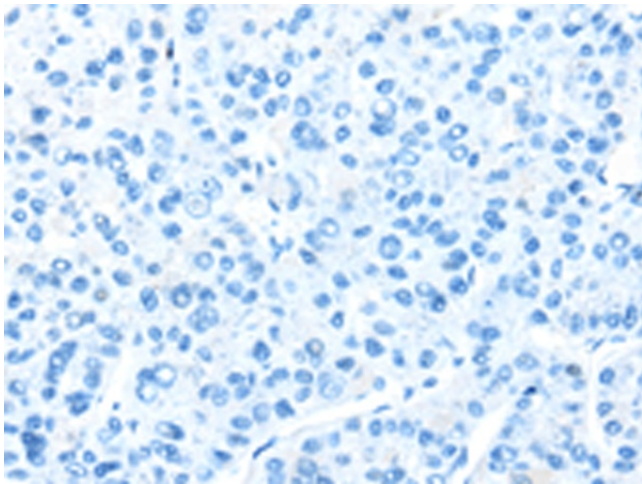
### Product images:



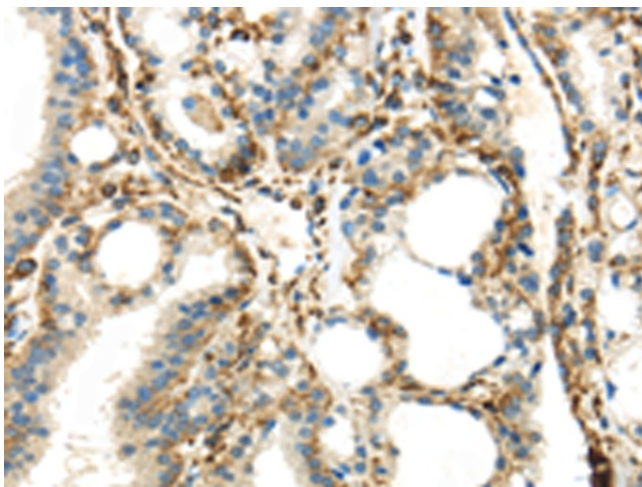
Gel: 6%SDS-PAGE  
Lysate: 40  $\mu$ g  
Lane: Human fetal liver tissue  
Primary antibody: [TA350700] (IQGAP2 Antibody)  
at dilution 1/350  
Secondary antibody: Goat anti rabbit IgG at  
1/8000 dilution  
Exposure time: 20 seconds



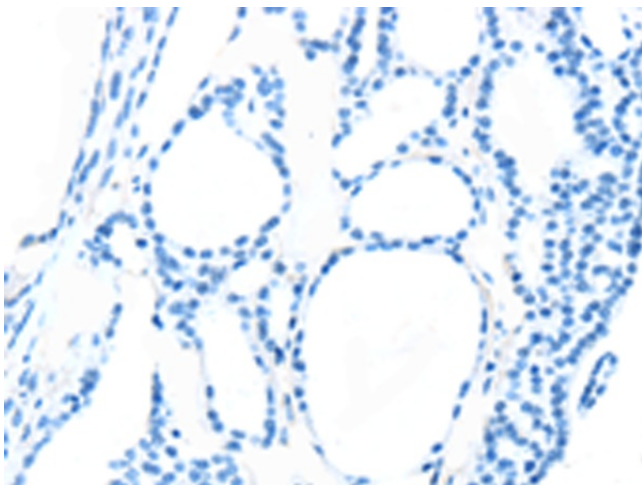
Immunohistochemistry of paraffin-embedded  
Human liver cancer tissue using [TA350700]  
(IQGAP2 Antibody) at dilution 1/45 (Original  
magnification:  $\times$ 200)



Immunohistochemistry of paraffin-embedded Human liver cancer tissue using [TA350700] (IQGAP2 Antibody) at dilution 1/45, treated with synthetic peptide. (Original magnification: ×200)



Immunohistochemistry of paraffin-embedded Human thyroid cancer tissue using [TA350700] (IQGAP2 Antibody) at dilution 1/45 (Original magnification: ×200)



Immunohistochemistry of paraffin-embedded Human thyroid cancer tissue using [TA350700] (IQGAP2 Antibody) at dilution 1/45, treated with synthetic peptide. (Original magnification: ×200)