

## Product datasheet for **TA350698**

### ING1 Rabbit Polyclonal Antibody

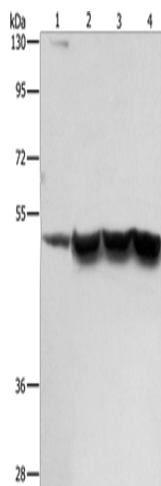
#### Product data:

Product Type:	Primary Antibodies
Applications:	WB
Recommended Dilution:	WB: 500-2000 WB positive control: Hela cells and mouse brain tissue, Jurkat and Raw264.7 cells
Reactivity:	Human, Mouse
Host:	Rabbit
Isotype:	IgG
Clonality:	Polyclonal
Immunogen:	Synthetic peptide of human ING1
Formulation:	pH7.4 PBS, 0.05% NaN <sub>3</sub> , 40% Glycerol
Concentration:	lot specific
Purification:	Antigen affinity purification
Conjugation:	Unconjugated
Storage:	Store at -20°C as received.
Stability:	Stable for 12 months from date of receipt.
Predicted Protein Size:	47 kDa
Gene Name:	inhibitor of growth family member 1
Database Link:	<a href="#">NP_937861</a> <a href="#">Entrez Gene 26356 Mouse</a> <a href="#">Entrez Gene 3621 Human</a> <a href="#">Q9UK53</a>
Background:	This gene encodes a tumor suppressor protein that can induce cell growth arrest and apoptosis. The encoded protein is a nuclear protein that physically interacts with the tumor suppressor protein TP53 and is a component of the p53 signaling pathway. Reduced expression and rearrangement of this gene have been detected in various cancers. Multiple alternatively spliced transcript variants encoding distinct isoforms have been reported.
Synonyms:	p24ING1c; p33; p33ING1; p33ING1b; p47; p47ING1a
Protein Families:	Druggable Genome, Transcription Factors



[View online »](#)

## Product images:



Gel: 8%SDS-PAGE

Lysate: 40 µg

Lane 1-4: HeLa cells

mouse brain tissue

Jurkat cells

Raw264.7 cells

Primary antibody: TA350698 (ING1 Antibody) at  
dilution 1/267

Secondary antibody: Goat anti rabbit IgG at  
1/8000 dilution

Exposure time: 1 second