

Product datasheet for **TA350696**

IGF1 Rabbit Polyclonal Antibody

Product data:

Product Type:	Primary Antibodies
Applications:	IHC
Recommended Dilution:	ELISA: 2000-5000, IHC: 25-100
Reactivity:	Human
Host:	Rabbit
Isotype:	IgG
Clonality:	Polyclonal
Immunogen:	Synthetic peptide of human IGF1
Formulation:	pH7.4 PBS, 0.05% NaN ₃ , 40% Glycerol
Concentration:	lot specific
Purification:	Antigen affinity purification
Conjugation:	Unconjugated
Storage:	Store at -20°C as received.
Stability:	Stable for 12 months from date of receipt.
Gene Name:	insulin like growth factor 1
Database Link:	NP_000609 Entrez Gene 3479 Human P05019

Background: The protein encoded by this gene is similar to insulin in function and structure and is a member of a family of proteins involved in mediating growth and development. The encoded protein is processed from a precursor, bound by a specific receptor, and secreted. Defects in this gene are a cause of insulin-like growth factor I deficiency. Several transcript variants encoding different isoforms have been found for this gene.

Synonyms: IGF-I; IGF1; MGF

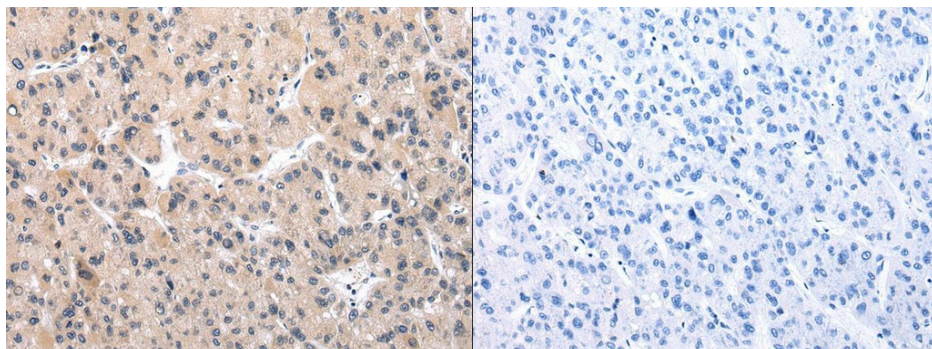
Protein Families: Druggable Genome, ES Cell Differentiation/IPS, Secreted Protein



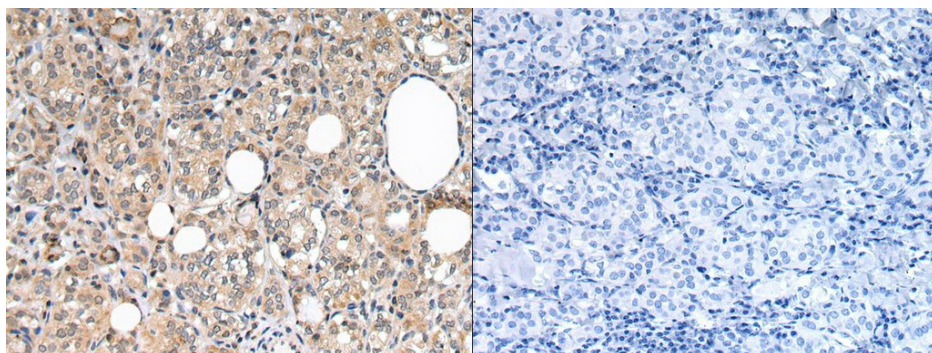
[View online »](#)

Protein Pathways: Dilated cardiomyopathy, Focal adhesion, Glioma, Hypertrophic cardiomyopathy (HCM), Long-term depression, Melanoma, mTOR signaling pathway, Oocyte meiosis, p53 signaling pathway, Pathways in cancer, Progesterone-mediated oocyte maturation, Prostate cancer

Product images:



The image on the left is immunohistochemistry of paraffin-embedded Human liver cancer tissue using (IGF1 Antibody) at dilution 1/30, on the right is treated with synthetic peptide. (Original magnification: $\times 200$)



The image on the left is immunohistochemistry of paraffin-embedded Human thyroid cancer tissue using (IGF1 Antibody) at dilution 1/30, on the right is treated with synthetic peptide. (Original magnification: $\times 200$)