

## Product datasheet for **TA350692S**

### HOXC6 Rabbit Polyclonal Antibody

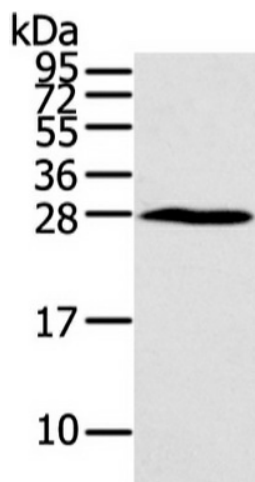
#### Product data:

|                         |  |
|-------------------------|--|
| Product Type:           | Primary Antibodies   |
| Applications:           | WB   |
| Recommended Dilution:   | ELISA: 2000-5000, WB: 500-2000   |
| Reactivity:             | Human, Mouse   |
| Host:                   | Rabbit   |
| Isotype:                | IgG  |
| Clonality:              | Polyclonal   |
| Immunogen:              | Synthetic peptide of human HOXC6   |
| Formulation:            | pH7.4 PBS, 0.05% NaN <sub>3</sub> , 40% Glycerol   |
| Purification:           | Antigen affinity purification  |
| Conjugation:            | Unconjugated   |
| Storage:                | Store at -20°C as received.  |
| Stability:              | Stable for 12 months from date of receipt.   |
| Predicted Protein Size: | 27 kDa   |
| Gene Name:              | homeobox C6  |
| Database Link:          | <a href="#">NP_004494</a><br><a href="#">Entrez Gene 15425 Mouse</a> <a href="#">Entrez Gene 3223 Human</a><br><a href="#">P09630</a>  |
| Background:             | This gene belongs to the homeobox family, members of which encode a highly conserved family of transcription factors that play an important role in morphogenesis in all multicellular organisms. Mammals possess four similar homeobox gene clusters, HOXA, HOXB, HOXC and HOXD, which are located on different chromosomes and consist of 9 to 11 genes arranged in tandem. This gene, HOXC6, is one of several HOXC genes located in a cluster on chromosome 12. Three genes, HOXC5, HOXC4 and HOXC6, share a 5' non-coding exon. |
| Synonyms:               | CP25; HHO.C8; HOX3; HOX3C  |
| Protein Families:       | Transcription Factors  |



[View online »](#)

## Product images:



Gel: 8%SDS-PAGE, Lysate: 40 ug, Lane: Huvec cell,  
Primary antibody: (HOXC6 Antibody) at dilution  
1/550 dilution, Secondary antibody: Goat anti  
rabbit IgG at 1/8000 dilution, Exposure time: 1  
minute