

Product datasheet for **TA350692**

HOXC6 Rabbit Polyclonal Antibody

Product data:

Product Type:	Primary Antibodies
Applications:	WB
Recommended Dilution:	ELISA: 2000-5000, WB: 500-2000
Reactivity:	Human, Mouse
Host:	Rabbit
Isotype:	IgG
Clonality:	Polyclonal
Immunogen:	Synthetic peptide of human HOXC6
Formulation:	pH7.4 PBS, 0.05% NaN ₃ , 40% Glycerol
Concentration:	lot specific
Purification:	Antigen affinity purification
Conjugation:	Unconjugated
Storage:	Store at -20°C as received.
Stability:	Stable for 12 months from date of receipt.
Predicted Protein Size:	27 kDa
Gene Name:	homeobox C6
Database Link:	NP_004494 Entrez Gene 15425 Mouse Entrez Gene 3223 Human P09630

Background: This gene belongs to the homeobox family, members of which encode a highly conserved family of transcription factors that play an important role in morphogenesis in all multicellular organisms. Mammals possess four similar homeobox gene clusters, HOXA, HOXB, HOXC and HOXD, which are located on different chromosomes and consist of 9 to 11 genes arranged in tandem. This gene, HOXC6, is one of several HOXC genes located in a cluster on chromosome 12. Three genes, HOXC5, HOXC4 and HOXC6, share a 5' non-coding exon.

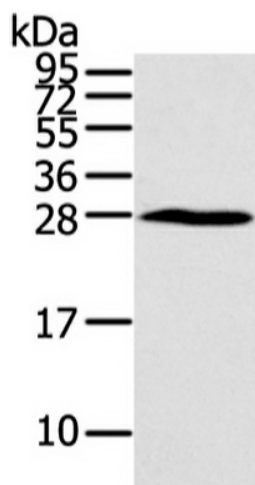
Synonyms: CP25; HHO.C8; HOX3; HOX3C



[View online »](#)

Protein Families: Transcription Factors

Product images:



Gel: 8%SDS-PAGE, Lysate: 40 ug, Lane: Huvec cell,
Primary antibody: (HOXC6 Antibody) at dilution
1/550 dilution, Secondary antibody: Goat anti
rabbit IgG at 1/8000 dilution, Exposure time: 1
minute