

## Product datasheet for **TA350690S**

### **HINT3 Rabbit Polyclonal Antibody**

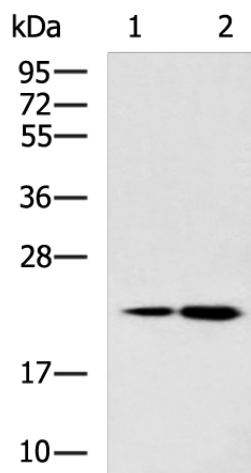
#### **Product data:**

Product Type:	Primary Antibodies
Applications:	IHC, WB
Recommended Dilution:	WB: 1000-5000 WB positive control: HepG2 cell, Human liver tissue lysates IHC: 50-200 Positive control: Human liver cancer Predicted cell location: Cytoplasm
Reactivity:	Human
Host:	Rabbit
Isotype:	IgG
Clonality:	Polyclonal
Immunogen:	Synthetic peptide of human HINT3
Formulation:	pH7.4 PBS, 0.05% NaN <sub>3</sub> , 40% Glycerol
Purification:	Antigen affinity purification
Conjugation:	Unconjugated
Storage:	Store at -20°C as received.
Stability:	Stable for 12 months from date of receipt.
Predicted Protein Size:	20 kDa
Gene Name:	histidine triad nucleotide binding protein 3
Database Link:	<a href="#">NP_612638</a> <a href="#">Entrez Gene 135114 Human</a> <a href="#">Q9NQE9</a>
Background:	Histidine triad proteins, such as HINT3, are nucleotide hydrolases and transferases that act on the alpha-phosphate of ribonucleotides. Hydrolyzes phosphoramidate and acyl-adenylate substrates.
Synonyms:	HINT4

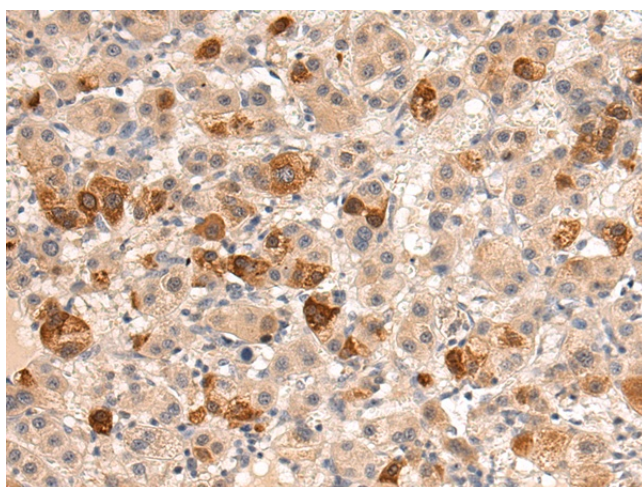


[View online »](#)

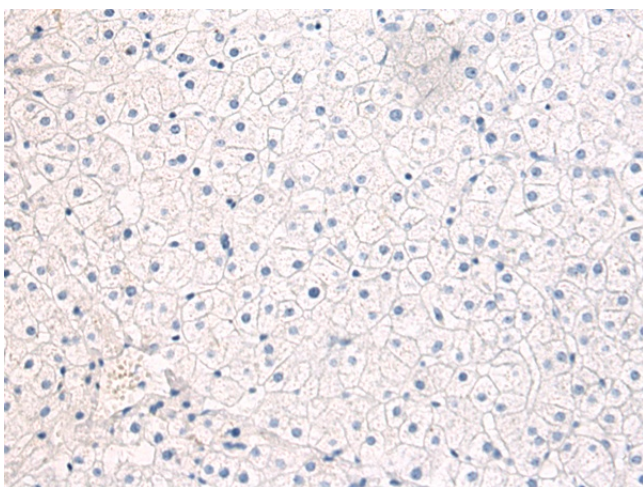
## Product images:



Gel: 12%SDS-PAGE  
Lysate: 40  $\mu$ g  
Lane 1-2: HepG2 cell  
Human liver tissue lysates  
Primary antibody: [TA350690] (HINT3 Antibody)  
at dilution 1/1000  
Secondary antibody: Goat anti rabbit IgG at  
1/5000 dilution  
Exposure time: 1 minute



Immunohistochemistry of paraffin-embedded  
Human liver cancer tissue using [TA350690]  
(HINT3 Antibody) at dilution 1/50 (Original  
magnification:  $\times$ 200)



Immunohistochemistry of paraffin-embedded Human liver cancer tissue using [TA350690] (HINT3 Antibody) at dilution 1/50, treated with synthetic peptide. (Original magnification:  $\times 200$ )