

## Product datasheet for **TA350685**

### GLUT12 (SLC2A12) Rabbit Polyclonal Antibody

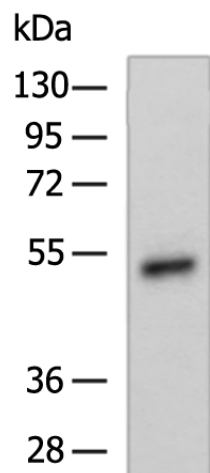
#### Product data:

Product Type:	Primary Antibodies
Applications:	WB
Recommended Dilution:	WB: 500-2000 WB positive control: Human placenta tissue lysate
Reactivity:	Human
Host:	Rabbit
Isotype:	IgG
Clonality:	Polyclonal
Immunogen:	Synthetic peptide of human SLC2A12
Formulation:	pH7.4 PBS, 0.05% NaN <sub>3</sub> , 40% Glycerol
Concentration:	lot specific
Purification:	Antigen affinity purification
Conjugation:	Unconjugated
Storage:	Store at -20°C as received.
Stability:	Stable for 12 months from date of receipt.
Predicted Protein Size:	67 kDa
Gene Name:	solute carrier family 2 member 12
Database Link:	<a href="#">NP_660159</a> <a href="#">Entrez Gene 154091 Human</a> <a href="#">Q8TD20</a>
Background:	Solute carrier family 2, facilitated glucose transporter member 12 is a protein that in humans is encoded by the SLC2A12 gene. SLC2A12 belongs to a family of transporters that catalyze the uptake of sugars through facilitated diffusion. This family of transporters show conservation of 12 transmembrane helices as well as functionally significant amino acid residues.
Synonyms:	GLUT8; GLUT12
Protein Families:	Transmembrane



[View online »](#)

## Product images:



Gel: 8%SDS-PAGE  
Lysate: 40  $\mu$ g  
Lane: Human placenta tissue lysate  
Primary antibody: TA350685 (SLC2A12 Antibody)  
at dilution 1/500  
Secondary antibody: Goat anti rabbit IgG at  
1/5000 dilution  
Exposure time: 10 minutes