

Product datasheet for **TA350683**

GDF7 Rabbit Polyclonal Antibody

Product data:

Product Type:	Primary Antibodies
Applications:	WB
Recommended Dilution:	WB: 200-1000 WB positive control: HepG2 cells
Reactivity:	Human, Mouse
Host:	Rabbit
Isotype:	IgG
Clonality:	Polyclonal
Immunogen:	Synthetic peptide of human GDF7
Formulation:	pH7.4 PBS, 0.05% NaN ₃ , 40% Glycerol
Concentration:	lot specific
Purification:	Antigen affinity purification
Conjugation:	Unconjugated
Storage:	Store at -20°C as received.
Stability:	Stable for 12 months from date of receipt.
Predicted Protein Size:	47 kDa
Gene Name:	growth differentiation factor 7
Database Link:	NP_878248 Entrez Gene 238057 Mouse Entrez Gene 151449 Human Q7Z4P5
Background:	This gene encodes a member of the bone morphogenetic protein (BMP) family. BMPs belong to the transforming growth factor-beta superfamily of secreted signalling molecules that regulate diverse processes in growth, repair and embryonic development. In mouse, this gene functions as an inductive signal from the roof plate required for the specification of neuronal identity in the dorsal spinal cord.
Synonyms:	BMP12

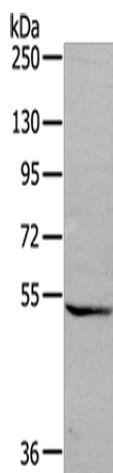


[View online »](#)

Protein Families: Adult stem cells, Cancer stem cells, Druggable Genome, Embryonic stem cells, ES Cell Differentiation/IPS, Secreted Protein, Stem cell relevant signaling - TGFb/BMP signaling pathway

Protein Pathways: TGF-beta signaling pathway

Product images:



Gel: 6%SDS-PAGE
Lysate: 40 µg
Lane: HepG2 cells
Primary antibody: TA350683 (GDF7 Antibody) at dilution 1/200
Secondary antibody: Goat anti rabbit IgG at 1/8000 dilution
Exposure time: 3 minutes