

Product datasheet for **TA350674S**

FOXN2 Rabbit Polyclonal Antibody

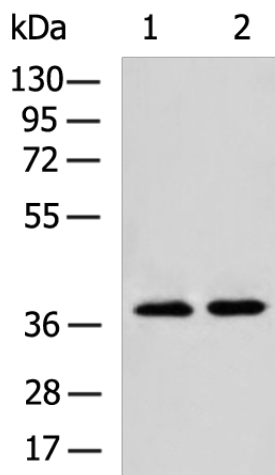
Product data:

Product Type:	Primary Antibodies
Applications:	IHC, WB
Recommended Dilution:	WB: 500-2000 WB positive control: K562 and Hela cell lysates IHC: 25-100 Positive control: Human breast cancer Predicted cell location: Nucleus
Reactivity:	Human
Host:	Rabbit
Isotype:	IgG
Clonality:	Polyclonal
Immunogen:	Synthetic peptide of human FOXN2
Formulation:	pH7.4 PBS, 0.05% NaN ₃ , 40% Glycerol
Purification:	Antigen affinity purification
Conjugation:	Unconjugated
Storage:	Store at -20°C as received.
Stability:	Stable for 12 months from date of receipt.
Gene Name:	forkhead box N2
Database Link:	NP_002149 Entrez Gene 3344 Human P32314
Background:	This gene encodes a forkhead domain binding protein and may function in the transcriptional regulation of the human T-cell leukemia virus long terminal repeat.
Synonyms:	HTLF
Protein Families:	Transcription Factors

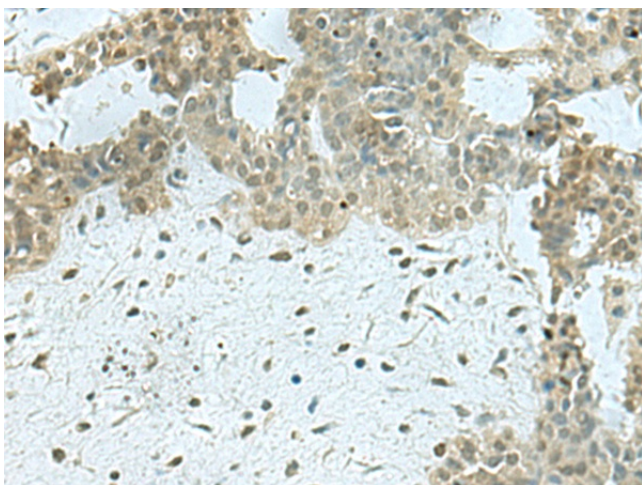


[View online »](#)

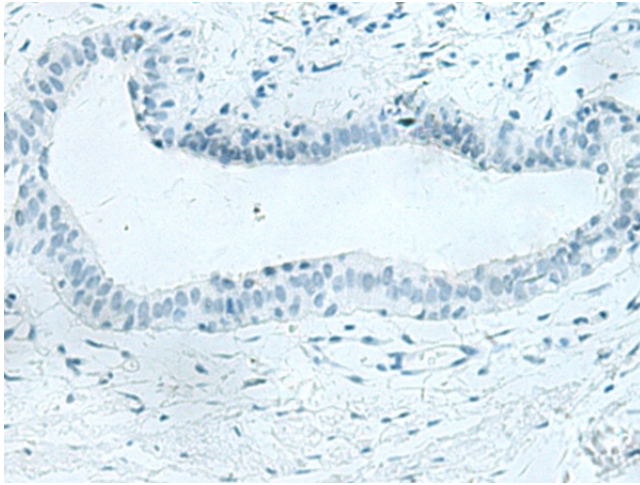
Product images:



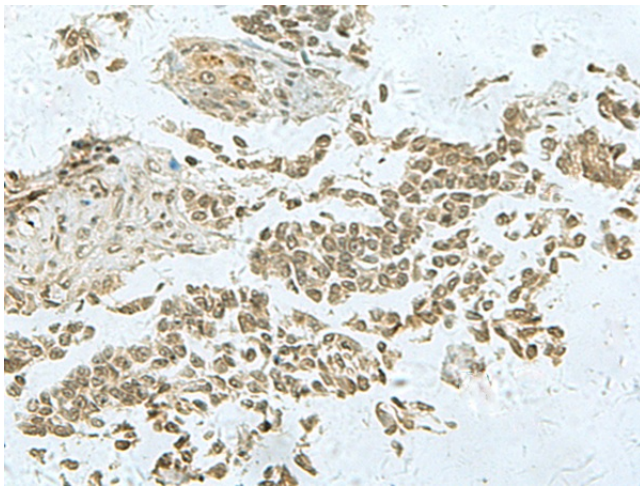
Gel: 8%SDS-PAGE
Lysate: 40 μ g
Lane 1-2: K562 and HeLa cell lysates
Primary antibody: [TA350674] (FOXN2 Antibody) at dilution 1/600
Secondary antibody: Goat anti rabbit IgG at 1/5000 dilution
Exposure time: 5 minutes



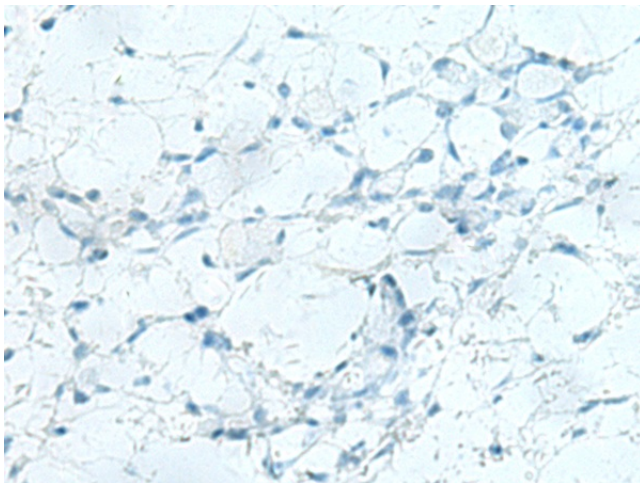
Immunohistochemistry of paraffin-embedded Human breast cancer tissue using [TA350674] (FOXN2 Antibody) at dilution 1/30 (Original magnification: $\times 200$)



Immunohistochemistry of paraffin-embedded Human breast cancer tissue using [TA350674] (FOXN2 Antibody) at dilution 1/30, treated with synthetic peptide. (Original magnification: ×200)



Immunohistochemistry of paraffin-embedded Human ovarian cancer tissue using [TA350674] (FOXN2 Antibody) at dilution 1/30 (Original magnification: ×200)



Immunohistochemistry of paraffin-embedded Human ovarian cancer tissue using [TA350674] (FOXN2 Antibody) at dilution 1/30, treated with synthetic peptide. (Original magnification: ×200)