

## Product datasheet for **TA350671**

### FOX E1 Rabbit Polyclonal Antibody

#### Product data:

Product Type:	Primary Antibodies
Applications:	IHC, WB
Recommended Dilution:	WB: 200-1000 WB positive control: Mouse skeletal muscle tissue IHC: 25-100 Positive control: Human prostate cancer Predicted cell location: Nucleus
Reactivity:	Human, Mouse
Host:	Rabbit
Isotype:	IgG
Clonality:	Polyclonal
Immunogen:	Synthetic peptide of human FOX E1
Formulation:	pH7.4 PBS, 0.05% NaN <sub>3</sub> , 40% Glycerol
Concentration:	lot specific
Purification:	Antigen affinity purification
Conjugation:	Unconjugated
Storage:	Store at -20°C as received.
Stability:	Stable for 12 months from date of receipt.
Predicted Protein Size:	38 kDa
Gene Name:	forkhead box E1
Database Link:	<a href="#">NP_004464</a> <a href="#">Entrez Gene 110805 Mouse</a> <a href="#">Entrez Gene 2304 Human</a> <a href="#">O00358</a>



[View online »](#)

**Background:**

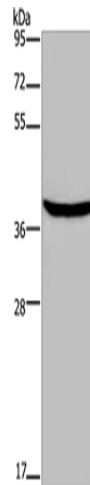
This intronless gene belongs to the forkhead family of transcription factors, which is characterized by a distinct forkhead domain. This gene functions as a thyroid transcription factor which likely plays a crucial role in thyroid morphogenesis. Mutations in this gene are associated with congenital hypothyroidism and cleft palate with thyroid dysgenesis. The map localization of this gene suggests it may also be a candidate gene for squamous cell epithelioma and hereditary sensory neuropathy type I.

**Synonyms:**

FKHL15; FOXE2; HFKH4; HFKL5; TITF2; TTF-2; TTF2

**Protein Families:**

Druggable Genome, Transcription Factors

**Product images:**

Gel: 8%SDS-PAGE

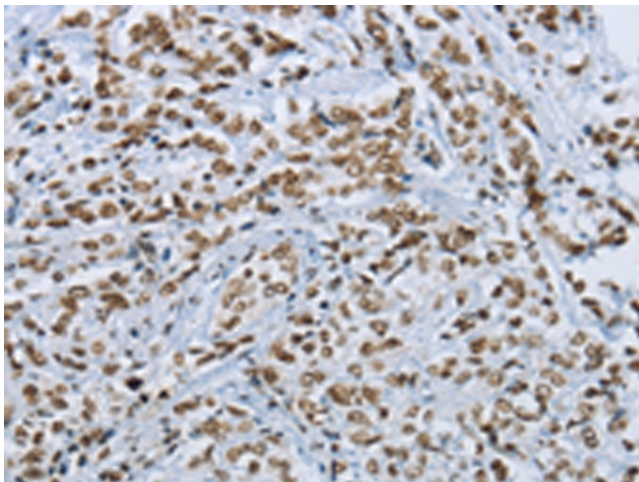
Lysate: 40 µg

Lane: Mouse skeletal muscle tissue

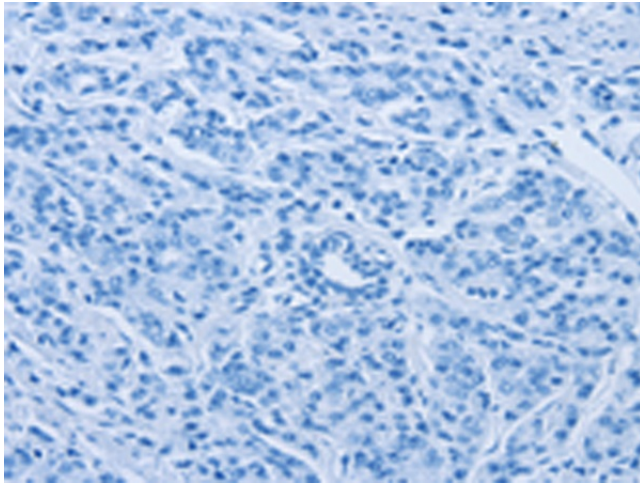
Primary antibody: TA350671 (FOXE1 Antibody) at dilution 1/300

Secondary antibody: Goat anti rabbit IgG at 1/8000 dilution

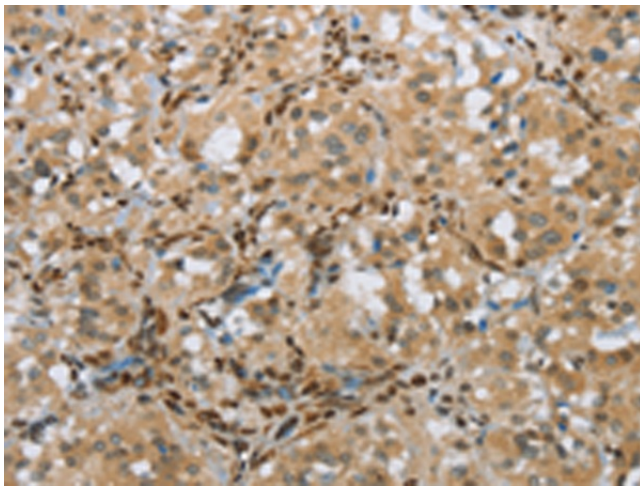
Exposure time: 2 minutes



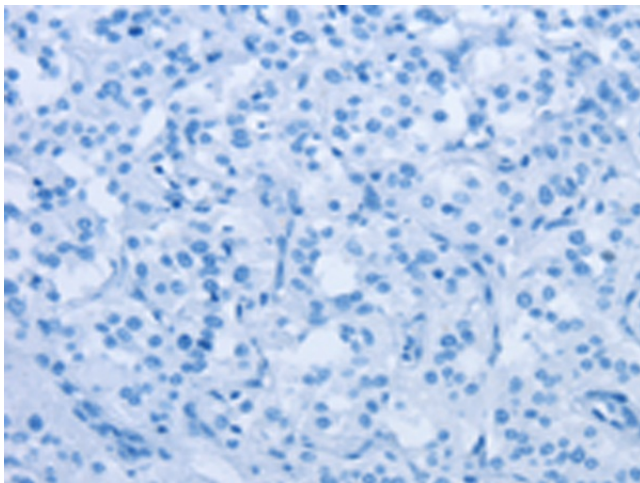
Immunohistochemistry of paraffin-embedded Human prostate cancer tissue using TA350671 (FOXE1 Antibody) at dilution 1/25 (Original magnification: ×200)



Immunohistochemistry of paraffin-embedded Human prostate cancer tissue using TA350671 (FOX E1 Antibody) at dilution 1/25, treated with synthetic peptide. (Original magnification: x200)



Immunohistochemistry of paraffin-embedded Human thyroid cancer tissue using TA350671 (FOX E1 Antibody) at dilution 1/25 (Original magnification: x200)



Immunohistochemistry of paraffin-embedded Human thyroid cancer tissue using TA350671 (FOX E1 Antibody) at dilution 1/25, treated with synthetic peptide. (Original magnification: x200)