

Product datasheet for **TA350666**

FOXA1 Rabbit Polyclonal Antibody

Product data:

Product Type:	Primary Antibodies
Applications:	IHC, WB
Recommended Dilution:	WB: 200-1000 WB positive control: Human prostate tissue and MCF-7 cells IHC: 50-200 Positive control: Human breast cancer Predicted cell location: Nucleus
Reactivity:	Human, Mouse, Rat
Host:	Rabbit
Isotype:	IgG
Clonality:	Polyclonal
Immunogen:	Synthetic peptide of human FOXA1
Formulation:	pH7.4 PBS, 0.05% NaN ₃ , 40% Glycerol
Concentration:	lot specific
Purification:	Antigen affinity purification
Conjugation:	Unconjugated
Storage:	Store at -20°C as received.
Stability:	Stable for 12 months from date of receipt.
Predicted Protein Size:	49 kDa
Gene Name:	forkhead box A1
Database Link:	NP_004487 Entrez Gene 15375 Mouse Entrez Gene 25098 Rat Entrez Gene 3169 Human P55317

Background: This gene encodes a member of the forkhead class of DNA-binding proteins. These hepatocyte nuclear factors are transcriptional activators for liver-specific transcripts such as albumin and transthyretin, and they also interact with chromatin. Similar family members in mice have roles in the regulation of metabolism and in the differentiation of the pancreas and liver.

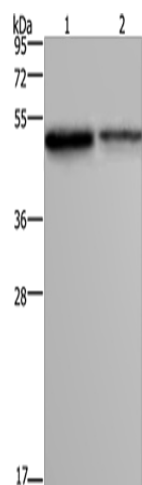


[View online »](#)

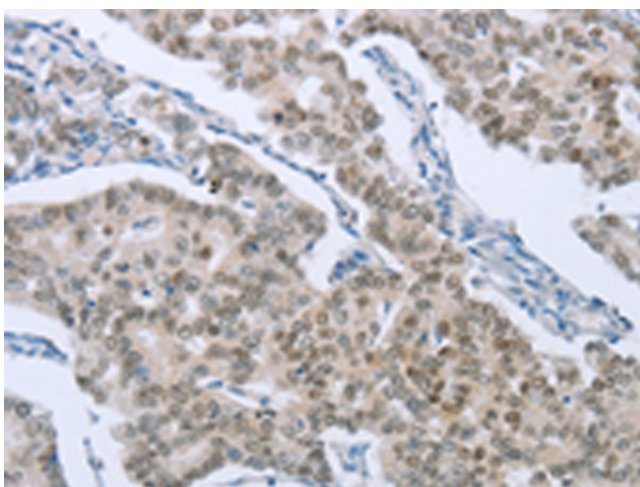
Synonyms: HNF3A; TCF3A

Protein Families: ES Cell Differentiation/IPS, Transcription Factors

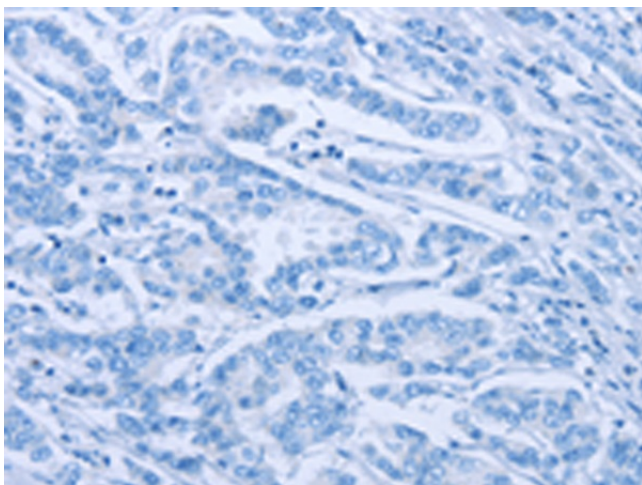
Product images:



Gel: 8%SDS-PAGE
Lysate: 40 μ g
Lane 1-2: Human prostate tissue
MCF7 cells
Primary antibody: TA350666 (FOXA1 Antibody) at
dilution 1/300
Secondary antibody: Goat anti rabbit IgG at
1/8000 dilution
Exposure time: 5 minutes



Immunohistochemistry of paraffin-embedded
Human breast cancer tissue using TA350666
(FOXA1 Antibody) at dilution 1/50 (Original
magnification: \times 200)



Immunohistochemistry of paraffin-embedded Human breast cancer tissue using TA350666 (FOXA1 Antibody) at dilution 1/50, treated with synthetic peptide. (Original magnification: $\times 200$)