

## Product datasheet for **TA350663**

### Fos B (FOSB) Rabbit Polyclonal Antibody

#### Product data:

Product Type:	Primary Antibodies
Applications:	IHC, WB
Recommended Dilution:	WB: 200-1000 WB positive control: Human kidney cancer and lung cancer tissue, human placenta tissue IHC: 50-200 Positive control: Human liver cancer Predicted cell location: Cytoplasm
Reactivity:	Human, Mouse
Host:	Rabbit
Isotype:	IgG
Clonality:	Polyclonal
Immunogen:	Synthetic peptide of human FOSB
Formulation:	pH7.4 PBS, 0.05% NaN <sub>3</sub> , 40% Glycerol
Concentration:	lot specific
Purification:	Antigen affinity purification
Conjugation:	Unconjugated
Storage:	Store at -20°C as received.
Stability:	Stable for 12 months from date of receipt.
Predicted Protein Size:	36 kDa
Gene Name:	FosB proto-oncogene, AP-1 transcription factor subunit
Database Link:	<a href="#">NP_006723</a> <a href="#">Entrez Gene 14282 Mouse</a> <a href="#">Entrez Gene 2354 Human</a> <a href="#">P53539</a>
Background:	The Fos gene family consists of 4 members: FOS, FOSB, FOSL1, and FOSL2. These genes encode leucine zipper proteins that can dimerize with proteins of the JUN family, thereby forming the transcription factor complex AP-1. As such, the FOS proteins have been implicated as regulators of cell proliferation, differentiation, and transformation. Alternatively spliced transcript variants encoding different isoforms have been found for this gene.

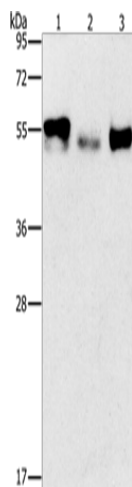


[View online »](#)

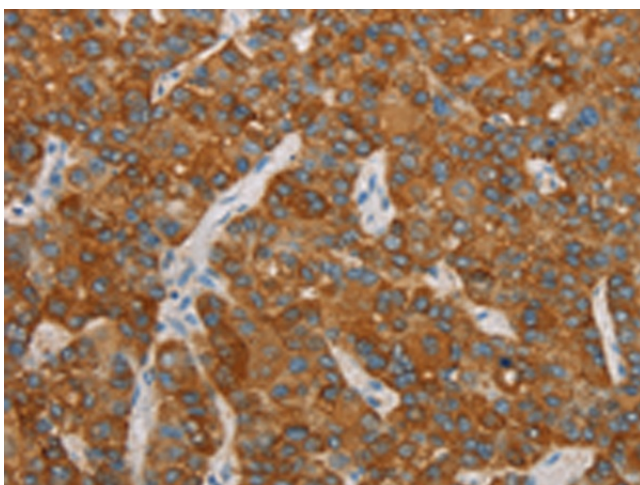
**Synonyms:** AP-1; G0S3; GOS3; GOSB

**Protein Families:** Druggable Genome, Transcription Factors

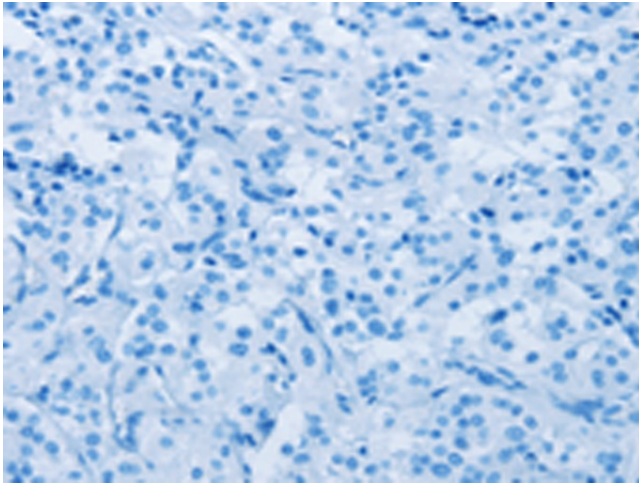
**Product images:**



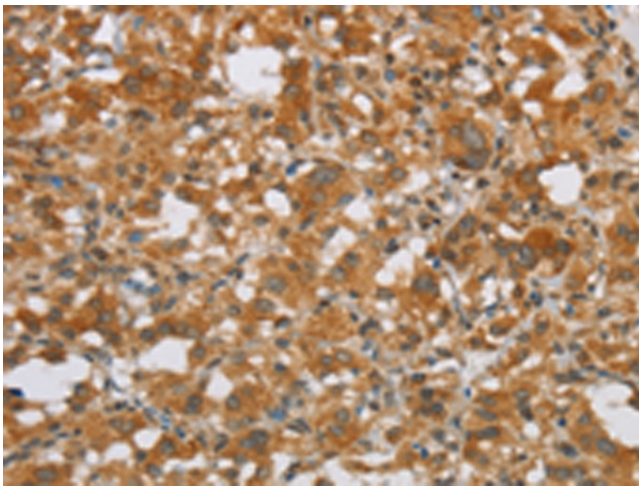
Gel: 8%SDS-PAGE  
 Lysate: 40 µg  
 Lane 1-3: Human kidney cancer tissue  
 Human lung cancer tissue  
 human placenta tissue  
 Primary antibody: TA350663 (FOSB Antibody) at dilution 1/200  
 Secondary antibody: Goat anti rabbit IgG at 1/8000 dilution  
 Exposure time: 10 minutes



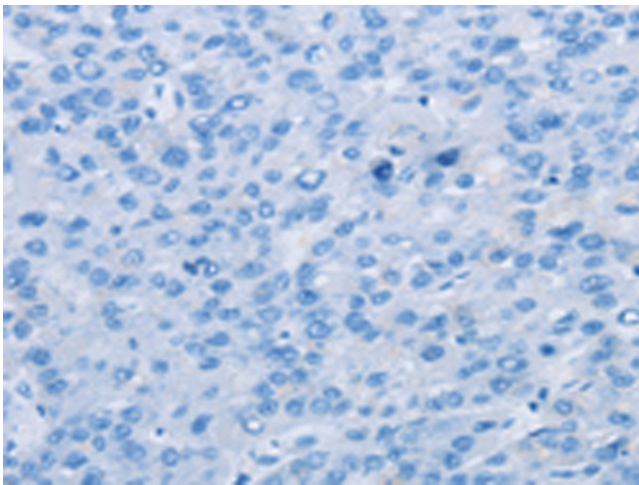
Immunohistochemistry of paraffin-embedded Human liver cancer tissue using TA350663 (FOSB Antibody) at dilution 1/20 (Original magnification: ×200)



Immunohistochemistry of paraffin-embedded Human liver cancer tissue using TA350663 (FOSB Antibody) at dilution 1/20, treated with synthetic peptide. (Original magnification: x200)



Immunohistochemistry of paraffin-embedded Human thyroid cancer tissue using TA350663 (FOSB Antibody) at dilution 1/20 (Original magnification: x200)



Immunohistochemistry of paraffin-embedded Human thyroid cancer tissue using TA350663 (FOSB Antibody) at dilution 1/20, treated with synthetic peptide. (Original magnification: x200)