

Product datasheet for **TA350656**

ECRG4 Rabbit Polyclonal Antibody

Product data:

Product Type:	Primary Antibodies
Applications:	IHC
Recommended Dilution:	IHC: 25-100 Positive control: Human thyroid cancer Predicted cell location: Cytoplasm
Reactivity:	Human, Mouse, Rat
Host:	Rabbit
Isotype:	IgG
Clonality:	Polyclonal
Immunogen:	Synthetic peptide of human C2orf40
Formulation:	pH7.4 PBS, 0.05% NaN ₃ , 40% Glycerol
Concentration:	lot specific
Purification:	Antigen affinity purification
Conjugation:	Unconjugated
Storage:	Store at -20°C as received.
Stability:	Stable for 12 months from date of receipt.
Gene Name:	chromosome 2 open reading frame 40
Database Link:	NP_115787 Entrez Gene 84417 Human Q9H1Z8



[View online »](#)

Background:

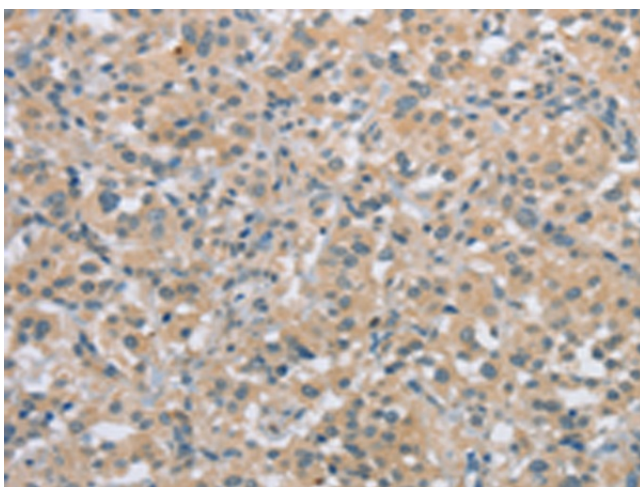
ECRG4 (esophageal cancer-related gene 4 protein), also known as augurin or C2orf40, is a 148 amino acid secreted protein. Belonging to the augurin family, ECRG4 is thought to be a hormone. It has also been suggested that ECRG4 may act as a tumor suppressor. The gene that encodes ECRG4 maps to human chromosome 2, which consists of 237 million bases encoding over 1,400 genes, making up approximately 8% of the human genome. A number of genetic diseases are linked to genes on chromosome 2. Harlequin ichthyosis, a rare and morbid skin deformity, is associated with mutations in the ABCA12 gene. The lipid metabolic disorder sitosterolemia is associated with ABCG5 and ABCG8. An extremely rare recessive genetic disorder, Alström syndrome is due to mutations in the ALMS1 gene. Interestingly, chromosome 2 contains what appears to be a vestigial second centromere and vestigial telomeres which gives credence to the hypothesis that human chromosome 2 is the result of an ancient fusion of two ancestral chromosomes.

Synonyms:

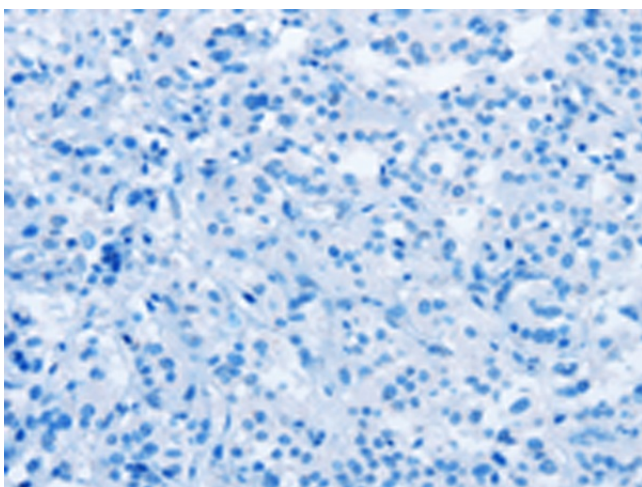
ECRG4

Protein Families:

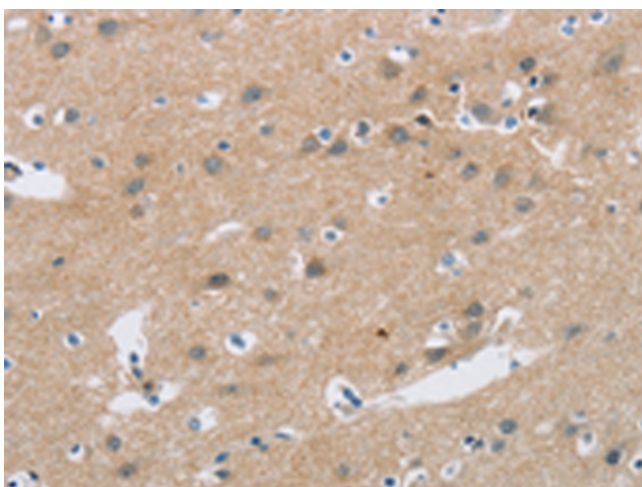
Secreted Protein, Transmembrane

Product images:

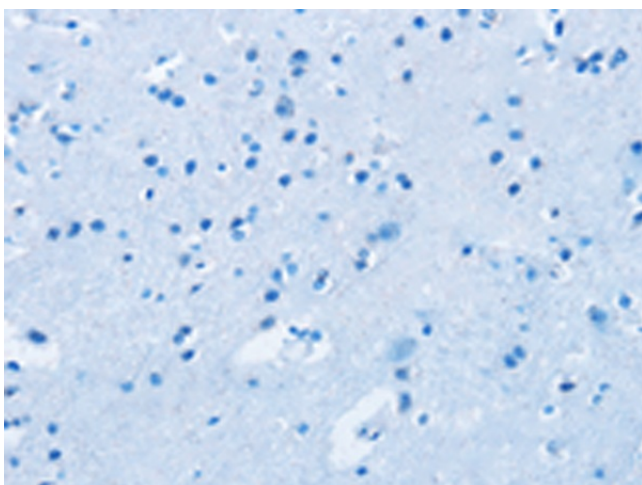
Immunohistochemistry of paraffin-embedded Human thyroid cancer tissue using TA350656 (ECRG4 Antibody) at dilution 1/20 (Original magnification: ×200)



Immunohistochemistry of paraffin-embedded Human thyroid cancer tissue using TA350656 (ECRG4 Antibody) at dilution 1/20, treated with synthetic peptide. (Original magnification: ×200)



Immunohistochemistry of paraffin-embedded Human brain tissue using TA350656 (ECRG4 Antibody) at dilution 1/20 (Original magnification: ×200)



Immunohistochemistry of paraffin-embedded Human brain tissue using TA350656 (ECRG4 Antibody) at dilution 1/20, treated with synthetic peptide. (Original magnification: ×200)