

## Product datasheet for **TA350655S**

### EAAT3 (SLC1A1) Rabbit Polyclonal Antibody

#### Product data:

Product Type:	Primary Antibodies
Applications:	IHC, WB
Recommended Dilution:	WB: 500-2000 WB positive control: Human placenta tissue and normal liver tissue IHC: 25-100 Positive control: Human liver cancer Predicted cell location: Cell membrane and Cytoplasm
Reactivity:	Human
Host:	Rabbit
Isotype:	IgG
Clonality:	Polyclonal
Immunogen:	Synthetic peptide of human SLC1A1
Formulation:	pH7.4 PBS, 0.05% NaN <sub>3</sub> , 40% Glycerol
Purification:	Antigen affinity purification
Conjugation:	Unconjugated
Storage:	Store at -20°C as received.
Stability:	Stable for 12 months from date of receipt.
Predicted Protein Size:	57 kDa
Gene Name:	solute carrier family 1 member 1
Database Link:	<a href="#">NP_004161</a> <a href="#">Entrez Gene 6505 Human</a> <a href="#">P43005</a>

**Background:** This gene encodes a member of the high-affinity glutamate transporters that play an essential role in transporting glutamate across plasma membranes. In brain, these transporters are crucial in terminating the postsynaptic action of the neurotransmitter glutamate, and in maintaining extracellular glutamate concentrations below neurotoxic levels. This transporter also transports aspartate, and mutations in this gene are thought to cause dicarboxylic amino aciduria, also known as glutamate-aspartate transport defect.

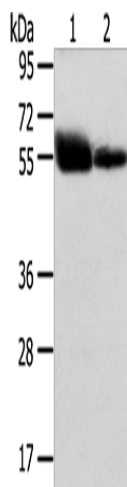


[View online »](#)

**Synonyms:** DCBXA; EAAC1; EAAT3; SCZD18

**Protein Families:** Druggable Genome, Transmembrane

**Product images:**



Gel: 8%SDS-PAGE

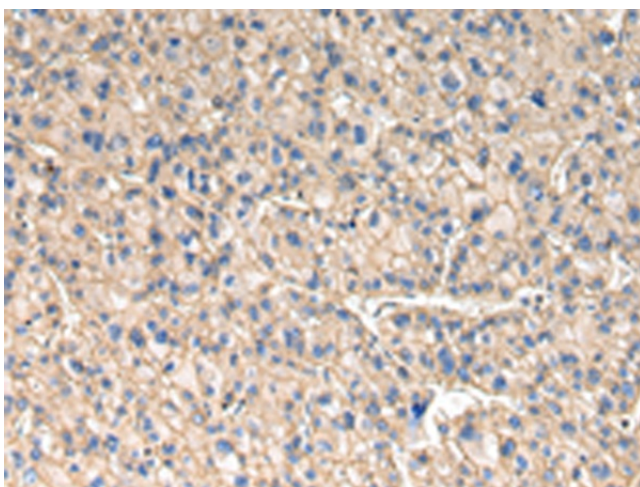
Lysate: 40 µg

Lane 1-2: Human placenta tissue and normal liver tissue

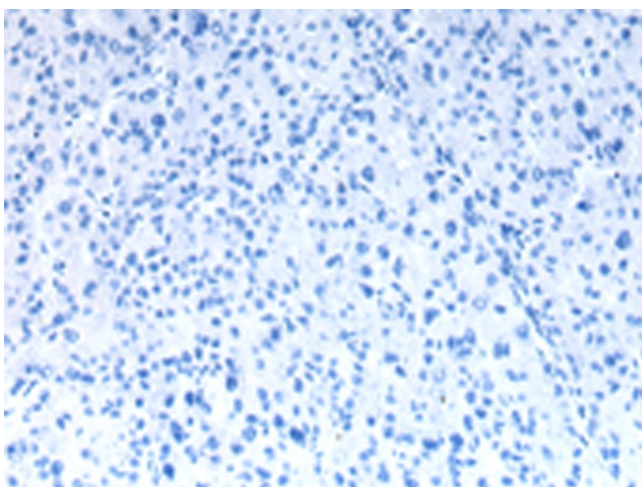
Primary antibody: [TA350655] (SLC1A1 Antibody) at dilution 1/400

Secondary antibody: Goat anti rabbit IgG at 1/8000 dilution

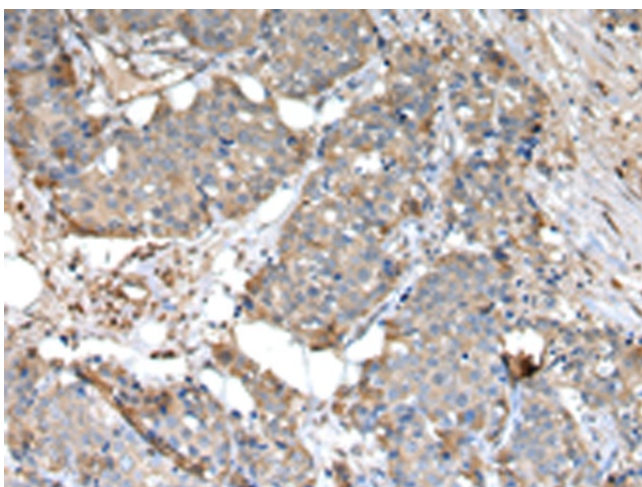
Exposure time: 4 minutes



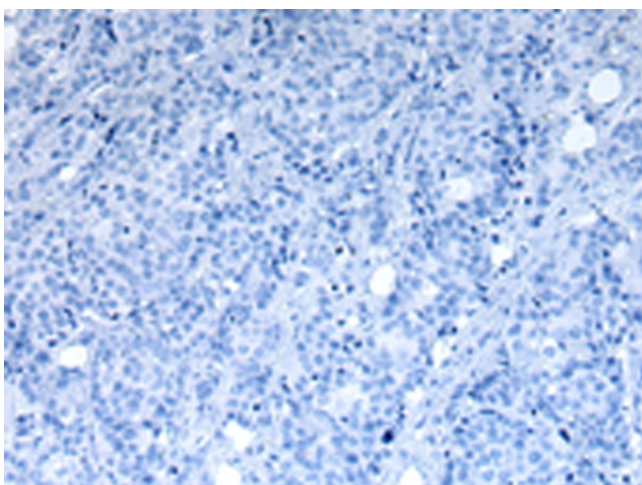
Immunohistochemistry of paraffin-embedded Human liver cancer tissue using [TA350655] (SLC1A1 Antibody) at dilution 1/30 (Original magnification: ×200)



Immunohistochemistry of paraffin-embedded Human liver cancer tissue using [TA350655] (SLC1A1 Antibody) at dilution 1/30, treated with synthetic peptide. (Original magnification:  $\times 200$ )



Immunohistochemistry of paraffin-embedded Human breast cancer tissue using [TA350655] (SLC1A1 Antibody) at dilution 1/30 (Original magnification:  $\times 200$ )



Immunohistochemistry of paraffin-embedded Human breast cancer tissue using [TA350655] (SLC1A1 Antibody) at dilution 1/30, treated with synthetic peptide. (Original magnification:  $\times 200$ )