

## Product datasheet for **TA350653**

### Dishevelled 2 (DVL2) Rabbit Polyclonal Antibody

#### Product data:

Product Type:	Primary Antibodies
Applications:	IHC
Recommended Dilution:	IHC: 25-100 Positive control: Human liver cancer Predicted cell location: Cytoplasm
Reactivity:	Human, Mouse
Host:	Rabbit
Isotype:	IgG
Clonality:	Polyclonal
Immunogen:	Synthetic peptide of human DVL2
Formulation:	pH7.4 PBS, 0.05% NaN <sub>3</sub> , 40% Glycerol
Concentration:	lot specific
Purification:	Antigen affinity purification
Conjugation:	Unconjugated
Storage:	Store at -20°C as received.
Stability:	Stable for 12 months from date of receipt.
Gene Name:	dishevelled segment polarity protein 2
Database Link:	<a href="#">NP_004413</a> <a href="#">Entrez Gene 13543 Mouse</a> <a href="#">Entrez Gene 1856 Human</a> <a href="#">O14641</a>
Background:	This gene encodes a member of the dishevelled (dsh) protein family. The vertebrate dsh proteins have approximately 40% amino acid sequence similarity with Drosophila dsh. This gene encodes a 90-kD protein that undergoes posttranslational phosphorylation to form a 95-kD cytoplasmic protein, which may play a role in the signal transduction pathway mediated by multiple Wnt proteins. The mechanisms of dishevelled function in Wnt signaling are likely to be conserved among metazoans.
Synonyms:	dishevelled; dishevelled 2; dishevelled 2 (homologous to Drosophila dsh); DSH homolog 2; dsh homolog 2 (Drosophila); segment polarity protein dishevelled homolog DVL-2

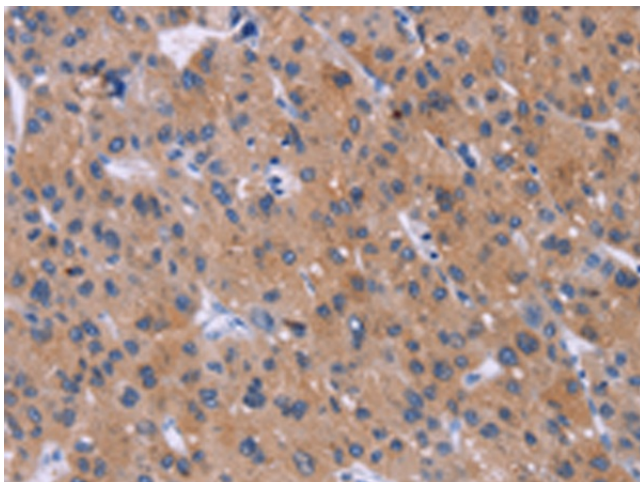


[View online »](#)

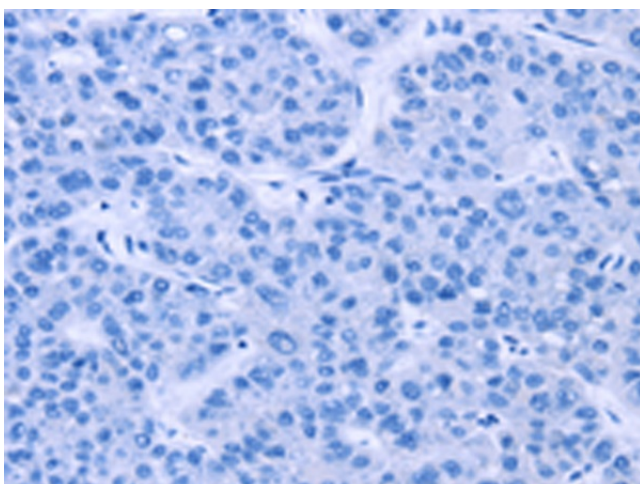
**Protein Families:** Druggable Genome, ES Cell Differentiation/IPS

**Protein Pathways:** Basal cell carcinoma, Colorectal cancer, Melanogenesis, Notch signaling pathway, Pathways in cancer, Wnt signaling pathway

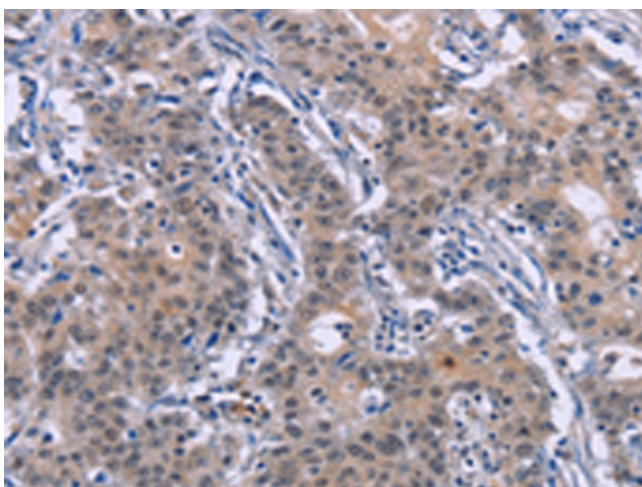
**Product images:**



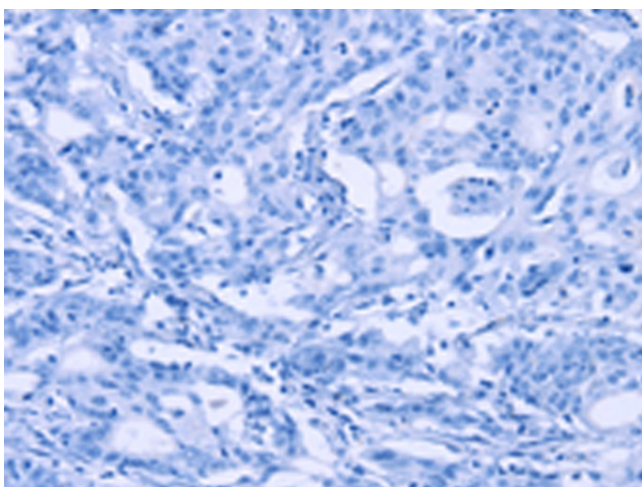
Immunohistochemistry of paraffin-embedded Human liver cancer tissue using TA350653 (DVL2 Antibody) at dilution 1/20 (Original magnification: ×200)



Immunohistochemistry of paraffin-embedded Human liver cancer tissue using TA350653 (DVL2 Antibody) at dilution 1/20, treated with synthetic peptide. (Original magnification: ×200)



Immunohistochemistry of paraffin-embedded Human gastric cancer tissue using TA350653 (DVL2 Antibody) at dilution 1/20 (Original magnification:  $\times 200$ )



Immunohistochemistry of paraffin-embedded Human gastric cancer tissue using TA350653 (DVL2 Antibody) at dilution 1/20, treated with synthetic peptide. (Original magnification:  $\times 200$ )