

Product datasheet for **TA350644**

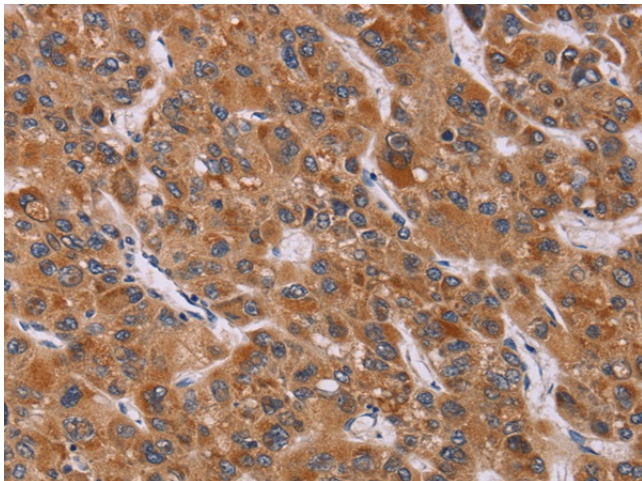
Calcitonin (CALCA) Rabbit Polyclonal Antibody

Product data:

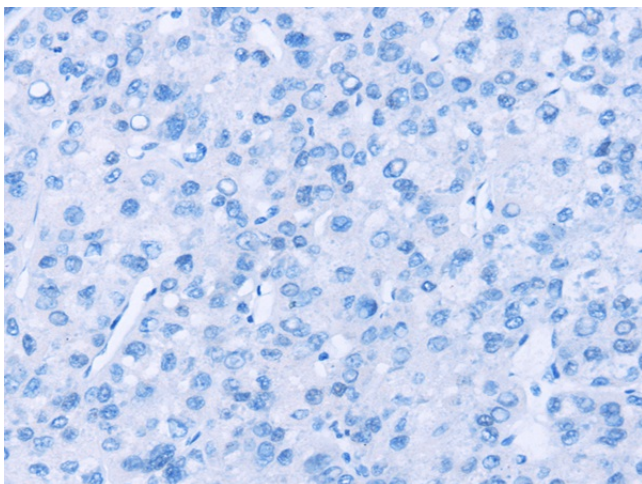
Product Type:	Primary Antibodies
Applications:	IHC
Recommended Dilution:	IHC: 50-200 Positive control: Human liver cancer Predicted cell location: Cytoplasm
Reactivity:	Human
Host:	Rabbit
Isotype:	IgG
Clonality:	Polyclonal
Immunogen:	Synthetic peptide of human CALCA
Formulation:	pH7.4 PBS, 0.05% NaN ₃ , 40% Glycerol
Concentration:	lot specific
Purification:	Antigen affinity purification
Conjugation:	Unconjugated
Storage:	Store at -20°C as received.
Stability:	Stable for 12 months from date of receipt.
Gene Name:	calcitonin related polypeptide alpha
Database Link:	NP_001029125 Entrez Gene 796 Human P06881
Background:	This gene encodes the peptide hormones calcitonin, calcitonin gene-related peptide and katelectin by tissue-specific alternative RNA splicing of the gene transcripts and cleavage of inactive precursor proteins. Calcitonin is involved in calcium regulation and acts to regulate phosphorus metabolism. Calcitonin gene-related peptide functions as a vasodilator while katelectin is a calcium-lowering peptide. Multiple transcript variants encoding different isoforms have been found for this gene.
Synonyms:	CALC1; CGRP; CGRP-I; CGRP1; CT; KC; PCT
Protein Families:	Druggable Genome, Secreted Protein



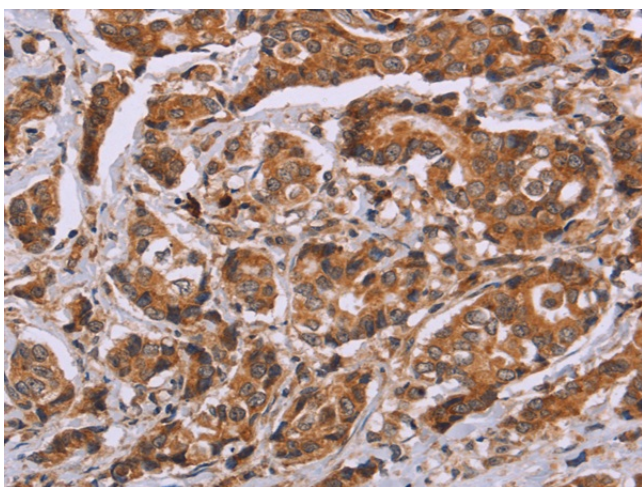
[View online »](#)

Product images:

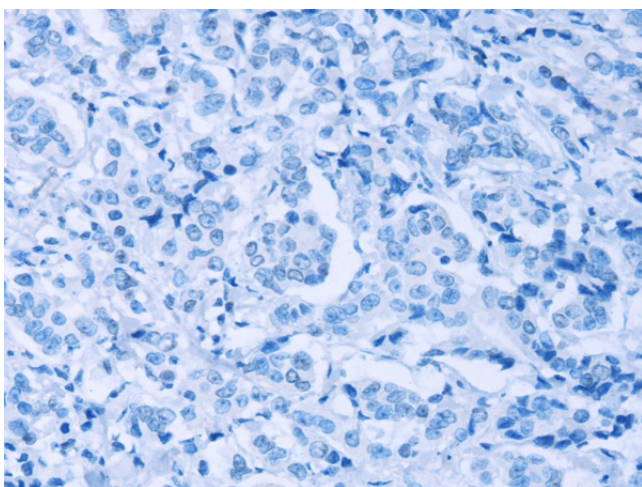
Immunohistochemistry of paraffin-embedded Human liver cancer tissue using TA350644 (CALCA/CALCB Antibody) at dilution 1/40 (Original magnification: $\times 200$)



Immunohistochemistry of paraffin-embedded Human liver cancer tissue using TA350644 (CALCA/CALCB Antibody) at dilution 1/40, treated with synthetic peptide. (Original magnification: $\times 200$)



Immunohistochemistry of paraffin-embedded Human breast cancer tissue using TA350644 (CALCA/CALCB Antibody) at dilution 1/40 (Original magnification: $\times 200$)



Immunohistochemistry of paraffin-embedded Human breast cancer tissue using TA350644 (CALCA/CALCB Antibody) at dilution 1/40, treated with synthetic peptide. (Original magnification: $\times 200$)