

Product datasheet for **TA350641**

CRMP4 (DPYSL3) Rabbit Polyclonal Antibody

Product data:

Product Type:	Primary Antibodies
Applications:	IHC, WB
Recommended Dilution:	WB: 200-1000 WB positive control: Mouse heart tissue lysate IHC: 25-50 Positive control: Human liver cancer Predicted cell location: Cytoplasm
Reactivity:	Human, Mouse, Rat
Host:	Rabbit
Isotype:	IgG
Clonality:	Polyclonal
Immunogen:	Synthetic peptide of human DPYSL3
Formulation:	pH7.4 PBS, 0.05% NaN ₃ , 40% Glycerol
Concentration:	lot specific
Purification:	Antigen affinity purification
Conjugation:	Unconjugated
Storage:	Store at -20°C as received.
Stability:	Stable for 12 months from date of receipt.
Predicted Protein Size:	62 kDa
Gene Name:	dihydropyrimidinase like 3
Database Link:	NP_001378 Entrez Gene 22240 Mouse Entrez Gene 25418 Rat Entrez Gene 1809 Human Q14195



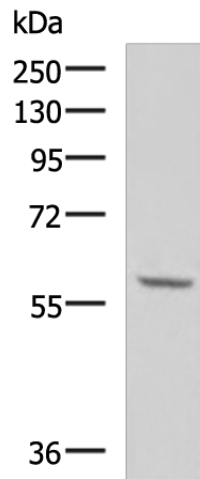
[View online »](#)

Background:

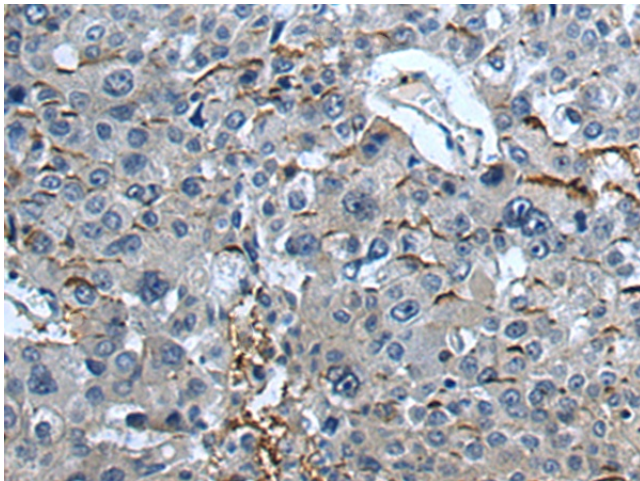
Collapsin response mediator proteins (CRMPs), including CRMP-1 (DRP-1), CRMP-2 (DRP-2 or TOAD64), CRMP-3 (DRP-4), CRMP-4 (DRP-3) and CRMP-5 (DRP-5), mediate signal transduction after exposure of neural cells to the axon guidance molecule semaphorin 3A (SEMA3A)/collapsin. CRMPs are present in the developing cerebral cortex and neocortical neurons and are responsive to SEMA3A. In the adult brain, the expression of CRMPs is dramatically downregulated. However, they remain expressed in structures that retain their capacity for differentiation and plasticity. Developing neurons in the adult hippocampus of mammals, known as the dentate gyrus, express CRMP-4. Rodent neocortical neurons express CRMP-4 in the perikaryon, in neurites and at growth cones.

Synonyms:

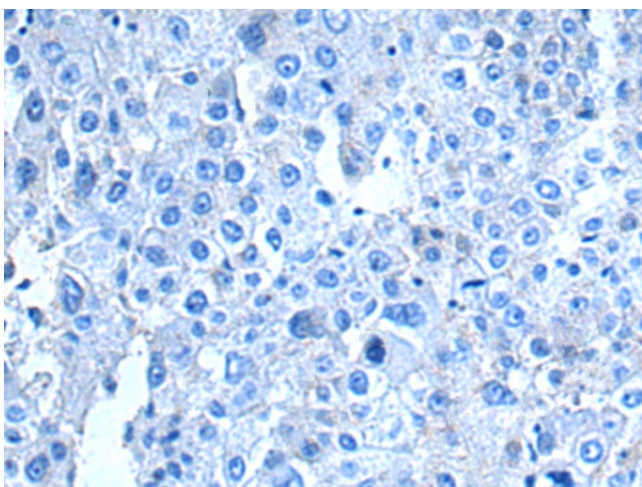
CRMP-4; CRMP4; DRP-3; DRP3; LCRMP; ULIP; ULIP-1

Product images:


Gel: 8%SDS-PAGE
 Lysate: 40 µg
 Lane: Mouse heart tissue lysate
 Primary antibody: TA350641 (DPYSL3 Antibody) at dilution 1/400
 Secondary antibody: Goat anti rabbit IgG at 1/5000 dilution
 Exposure time: 20 seconds



Immunohistochemistry of paraffin-embedded Human liver cancer tissue using TA350641 (DPYSL3 Antibody) at dilution 1/20 (Original magnification: ×200)



Immunohistochemistry of paraffin-embedded Human liver cancer tissue using TA350641 (DPYSL3 Antibody) at dilution 1/20, treated with synthetic peptide. (Original magnification: ×200)