

Product datasheet for **TA350639**

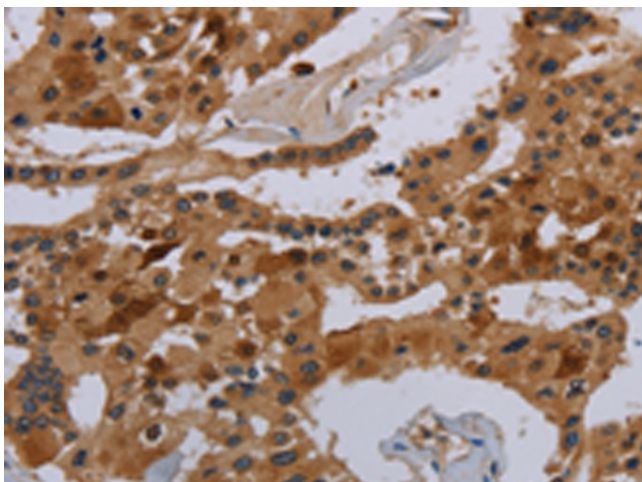
COX18 Rabbit Polyclonal Antibody

Product data:

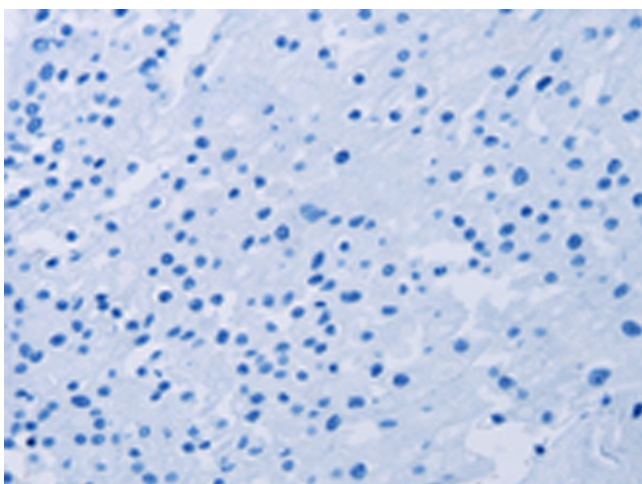
Product Type:	Primary Antibodies
Applications:	IHC
Recommended Dilution:	IHC: 25-100 Positive control: Human prostate cancer Predicted cell location: Cytoplasm
Reactivity:	Human, Mouse
Host:	Rabbit
Isotype:	IgG
Clonality:	Polyclonal
Immunogen:	Synthetic peptide of human COX18
Formulation:	pH7.4 PBS, 0.05% NaN ₃ , 40% Glycerol
Concentration:	lot specific
Purification:	Antigen affinity purification
Conjugation:	Unconjugated
Storage:	Store at -20°C as received.
Stability:	Stable for 12 months from date of receipt.
Gene Name:	COX18 cytochrome c oxidase assembly factor
Database Link:	NP_776188 Entrez Gene 231430 Mouse Entrez Gene 285521 Human Q8N8Q8
Background:	COX18 encodes a cytochrome c oxidase (COX)-assembly protein. The <i>S. cerevisiae</i> Cox18 protein catalyzes the insertion of the Cox2 (MTCO2; MIM 516040) C-terminal tail into the mitochondrial inner membrane, an intermediate step in the assembly of complex IV of the mitochondrial respiratory chain.
Synonyms:	COX18HS
Protein Families:	Transmembrane



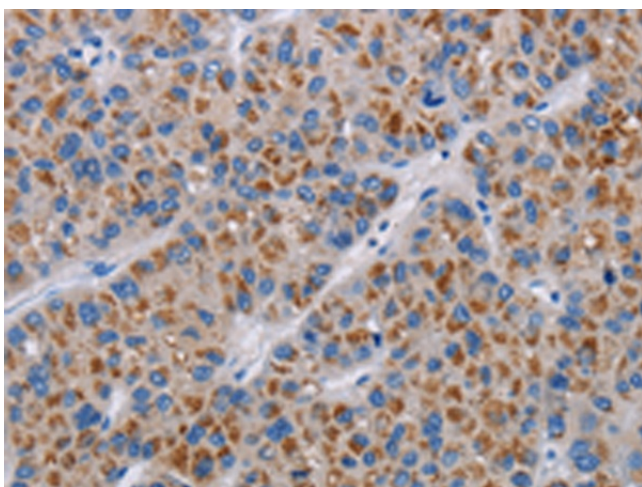
[View online »](#)

Product images:

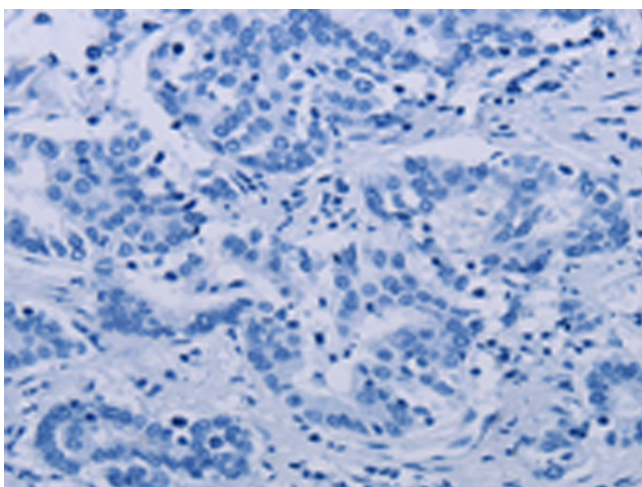
Immunohistochemistry of paraffin-embedded Human prostate cancer tissue using TA350639 (COX18 Antibody) at dilution 1/20 (Original magnification: $\times 200$)



Immunohistochemistry of paraffin-embedded Human prostate cancer tissue using TA350639 (COX18 Antibody) at dilution 1/20, treated with synthetic peptide. (Original magnification: $\times 200$)



Immunohistochemistry of paraffin-embedded Human liver cancer tissue using TA350639 (COX18 Antibody) at dilution 1/20 (Original magnification: ×200)



Immunohistochemistry of paraffin-embedded Human liver cancer tissue using TA350639 (COX18 Antibody) at dilution 1/20, treated with synthetic peptide. (Original magnification: ×200)