

## Product datasheet for **TA350631**

### Artemin (ARTN) Rabbit Polyclonal Antibody

#### Product data:

Product Type:	Primary Antibodies
Applications:	WB
Recommended Dilution:	WB: 500-2000 WB positive control: A431 and 231 cells
Reactivity:	Human, Mouse, Rat
Host:	Rabbit
Isotype:	IgG
Clonality:	Polyclonal
Immunogen:	Synthetic peptide of human ARTN
Formulation:	pH7.4 PBS, 0.05% NaN <sub>3</sub> , 40% Glycerol
Concentration:	lot specific
Purification:	Antigen affinity purification
Conjugation:	Unconjugated
Storage:	Store at -20°C as received.
Stability:	Stable for 12 months from date of receipt.
Predicted Protein Size:	23 kDa
Gene Name:	artemin
Database Link:	<a href="#">NP_476501</a> <a href="#">Entrez Gene 11876 Mouse</a> <a href="#">Entrez Gene 362572 Rat</a> <a href="#">Entrez Gene 9048 Human</a> <a href="#">Q5T4W7</a>



[View online »](#)

**Background:**

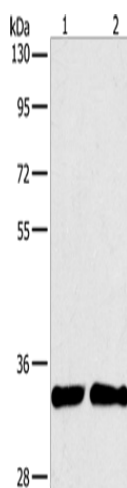
The protein encoded by this gene is a member of the glial cell line-derived neurotrophic factor (GDNF) family of ligands which are a group of ligands within the TGF-beta superfamily of signaling molecules. GDNFs are unique in having neurotrophic properties and have potential use for gene therapy in neurodegenerative disease. Artemin has been shown in culture to support the survival of a number of peripheral neuron populations and at least one population of dopaminergic CNS neurons. Its role in the PNS and CNS is further substantiated by its expression pattern in the proximity of these neurons. This protein is a ligand for the RET receptor and uses GFR-alpha 3 as a coreceptor. Multiple transcript variants encoding different isoforms have been found for this gene.

**Synonyms:**

artemin; ENOVIN; EVN; NBN; neublastin; neurotrophic factor; neurotrophic factor artemin; OTTHUMP00000009173; OTTHUMP00000009174

**Protein Families:**

Druggable Genome, Secreted Protein

**Product images:**

Gel: 8%SDS-PAGE  
Lysate: 40 µg  
Lane 1-2: A431 cells  
231 cells  
Primary antibody: TA350631 (ARTN Antibody) at dilution 1/350  
Secondary antibody: Goat anti rabbit IgG at 1/8000 dilution  
Exposure time: 2 minutes