

## Product datasheet for **TA350624**

### UBXN2A Rabbit Polyclonal Antibody

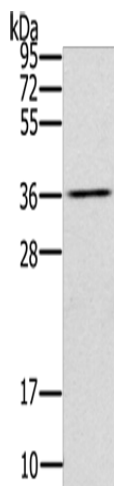
#### Product data:

Product Type:	Primary Antibodies
Applications:	WB
Recommended Dilution:	WB: 200-1000 WB positive control: Mouse liver tissue
Reactivity:	Human, Mouse
Host:	Rabbit
Isotype:	IgG
Clonality:	Polyclonal
Immunogen:	Synthetic peptide of human UBXN2A
Formulation:	pH7.4 PBS, 0.05% NaN <sub>3</sub> , 40% Glycerol
Concentration:	lot specific
Purification:	Antigen affinity purification
Conjugation:	Unconjugated
Storage:	Store at -20°C as received.
Stability:	Stable for 12 months from date of receipt.
Predicted Protein Size:	29 kDa
Gene Name:	UBX domain protein 2A
Database Link:	<a href="#">NP_859064</a> <a href="#">Entrez Gene 217379 Mouse</a> <a href="#">Entrez Gene 165324 Human</a> <a href="#">P68543</a>
Background:	The protein is located in both the ER and cis-Golgi compartments from biochemical and immunofluorescence studies.UBXD4 as one of the cytosolic proteins that interact directly with the $\alpha 3$ and $\alpha 4$ nAChR subunits.Overexpression of UBXD4 in differentiated PC12 cells (dPC12) increased nAChR cell surface expression, especially that of the $\alpha 3\beta 2$ subtype.
Synonyms:	UBXD4



[View online »](#)

## Product images:



Gel: 10%SDS-PAGE  
Lysate: 40  $\mu$ g  
Lane: Mouse liver tissue  
Primary antibody: TA350624 (UBXN2A Antibody)  
at dilution 1/200  
Secondary antibody: Goat anti rabbit IgG at  
1/8000 dilution  
Exposure time: 10 seconds